



SUBMITTAL REVIEW

H&A JN: 1614.03
Project: MSBA Accelerated Repair Program
Halifax Elementary School – Windows, Doors & Siding Replacement
464 Plymouth Street
Halifax, MA 02338

SUBMITTAL 06 6600-5 Cellular PVC Fabrications

ITEMS:

1. Harvey PVC Main Specification
2. Harvey PVC Specification (Free Foam)
3. Harvey PVC Trim Installation Instructions
4. Harvey PVC Trim Warranty
5. Harvey PVC Trim Moulding

COMMENTS:

1. Clearly identify the Harvey moulding profile names/numbers on the submittal that will be used for this project.
2. Submit color chart and prefinished **White** color samples of the following items for review and approval: (Prefinished PVC Trimboard color to match siding color).


Wolf PVC Trimboard
Harvey PVC Mouldings

3. Provide PVC trimboards and moulding for mockup as marked on construction documents.


HABEEB & ASSOCIATES ARCHITECTS INC. 150 LONGWATER DRIVE NORWELL, MA 02061	
NO EXCEPTIONS TAKEN	
NOTE MARKINGS RESUBMITTAL NOT REQ'D	X
NOTE MARKINGS RESUBMITTAL REQ'D	
REJECTED	
This review is given for design concept only and does not relieve the contractor from meeting the provisions of the contract, drawings and specifications. The Contractor is responsible for verifying all dimensions, schedules, quantities and field conditions.	
DATE 03-12-18	BY SB

To: **Habeeb & Associates Architects**
150 Longwater Drive
Norwell, MA 02061

Contractor: **Lambrian Construction Corporation**
384 Washington Street
Westwood, MA 02090
Tel: (781) 461-1100 Fax: (781) 461-9885

Submittal No:	5
Date Submitted:	3/06/2018
Manufacturer:	Wolf
Product Name:	Wolf PVC Trim Boards
Specification Section:	06 6600 - Cellural PVC Fabrications - PART 2
Approved By:	
Description:	Product Data

COMMENTS:

PROJECT: Halifax Elementary School
LAMBRIAN CONSTRUCTION CORP.
Approved by: 

WINDOWS, DOORS & SIDING REPLACEMENT
HALIFAX ELEMENTARY SCHOOL
464 PLYMOUTH STREET
HALIFAX, MASSACHUSETTS 02338

Part I—GENERAL

1.01 Section Includes

- A. WOLF PVC Trim Boards and Mouldings is cellular PVC used for corner boards, soffits, fascias, battens, door pilasters, frieze boards, rake boards, architectural millwork and window/door trim.

1.02 Related Sections

- A. Section 06 64 00 – Plastic Paneling.
- B. Section 06 65 00 – Plastic Simulated Wood Trim.
- C. Section 06 66 00 – Custom Ornamental Simulated Woodwork.

1.03 References

- A. AATC127 – Water Resistance
- B. ASTM C177 – Thermal Conductivity
- C. ASTM D256 – Izod Impact Resistance
- D. ASTM D570 – Water Absorption of Plastics.
- E. ASTM D635 – Burn Rate
- F. ASTM D648 – Heat Deflection Temperature
- G. ASTM D696 – Coefficient of Linear Thermal Expansion
- H. ASTM D790 – Flexural Properties of Un-reinforced and Reinforced Plastic and Electrical Insulating Materials.
- I. ASTM D792 – Density
- J. ASTM D1761 – Fastener Pull Through
- K. ASTM D3345 – Termite Resistance
- L. ASTM D5420 – Gardner Impact Resistance
- M. ASTM D6662 – Freeze-Thaw Resistance
- N. ASTM E84 – Surface Burning Characteristics
- O. ASTM E330 – Uplift Resistance
- P. ASTM G155 – Accelerated Weathering
- Q. AWWA E12 – Corrosion by Treated Wood

1.04 Submittals

- A. General: Submit listed submittals in accordance with Conditions of the Contract and Division 1 Submittal Procedures Section.
- B. Product Data: Submit product data, manufacturer's catalogs, SPEC-DATA® product sheet, for specified products.
- C. Samples: Submit three material samples representative of the texture, thickness and widths shown and specified herein.

1.05 Quality Assurance

- A. Regulatory Requirements: Check with Local Building Code for installation requirements.
- B. Allowable Tolerances:
 - 1. Variation in component length: - 0.00 / + 7/8"
 - 2. Variation in component Width: - 0 / + 1/16"
 - 3. Variation in component thickness: ± 5%
 - 4. Variation in component edge: ± 2°
 - 6. Density range: .58–.62
 - 7. Shore-D hardness: 45
- C. Workmanship, Finish, and Appearance:
 - 1. WOLF PVC Trim Boards and Mouldings are a free foam cellular PVC that is homogeneous and free of excessive voids, holes, cracks, foreign inclusions and other defects. The edges must be square and top and bottom surfaces shall be flat with no convex or concave deviation.
 - 2. Uniform surface free from cupping, warping and twisting.

Part I—GENERAL (continued)**1.06 Delivery, Storage and Handling**

A. Materials should be stored on a flat and level surface on a full shipping pallet. Handle materials to prevent damage to product edges and corners. Store under provided protective covering to prevent jobsite dirt and residue from collecting on the boards.

1.07 Warranty

A. Provide manufacturer's limited lifetime warranty against defects in manufacturing that cause products to rot, corrode, delaminate or excessively swell from moisture.

Part II—PRODUCTS**2.01 Materials**

A. Material: free foam cellular PVC material with small cell microstructure and an average density of .60 grams/cm³.

a. Materials shall have a minimum physical and performance properties specified in section B of this document.

B. Performance and physical characteristic requirements:

TEST	TEST METHOD	TYPICAL PROPERTY
Density, g/cm ³	ASTM D792	0.60
MOR (Flexural Strength), psi	ASTM D790	3,600.0
MOR (Flexural Modulus), psi	ASTM D790	144,000.0
Weathering		
MOR Change, %	ASTM G155 & D790	+2.4% (Pass ICC AC227)
MOE Change, %		+0.7%
Freeze-Thaw		
MOR Change, %	ASTM D6662 & D790	+0.1% (Pass ICC AC227)
MOE Change, %		+0.9%
Water Resistance	ASTM D570 & AATCC 127	No Penetration (Pass ICC AC227)
Water Absorption, 24 hrs, %	ASTM D570	<0.3%
Termite Resistance	ASTM D3345	9.2 (Pass ICC AC227)
Surface Burning, Flame Spread Index	ASTM E84	25
Burning Rate	ASTM D635	No burn when flame removed
Mechanical Fastener, Allowable Load, lbf	ASTM D1761	151 (8d nail and 1" thick trim)
Negative Transverse Wind Load, psf	ASTM E330	72
Gardener Impact Resistance, in-lbf	ASTM D5420	629 (3/4" thick trim)
Coefficient of Linear Thermal Expansion, °F ⁻¹	ASTM D696	3.5 x 10 ⁻⁵
Heat Deflection Temp., °F @ 264 psi	ASTM D648	146
Corrosion by Preservative Treated Wood	AWAP E12	No Wt. Loss (Pass ICC AC227)
Izod Impact, Notched, ft-lb/in	ASTM D256	0.37
Heat Conductivity, btu-in/hr-ft ² -°F	ASTM C177	0.50

Part III—EXECUTION

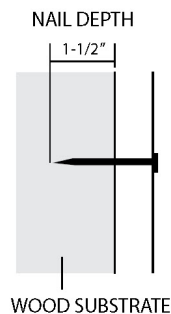
3.01 Installation

CUTTING

- Use standard wood working equipment for cutting.
- Carbide tipped blades are recommended.
- Avoid using fine tooth metal cutting blades.
- Rough edge from cutting may be caused by excessive friction, poor board support, or improper tooling.

FASTENING

- Use standard nail guns/wood working tools.
- Stainless steel or hot-dipped galvanized nails/screws are recommended.
- Do not use brads, staples, wire nails or fine-threaded wood screws.
- Place nails and screws on center of board and keep approximately 3/4" from each edge.
- Fasteners should penetrate into flat, solid wood substrate or framing member a minimum of 1-1/2"
- If nailing product at 32°F or below, pre-drilling is required.
- Pre-drilling and/or counter-sink are typically not required unless a larger fastener is used.
- As with wood, use 2 fasteners per every framing member for trimboard applications. Trimboards 12" or wider, as well as sheets, will require additional fasteners not to exceed 8" on center.
- Fasteners must be installed within 2" of the end of each board.

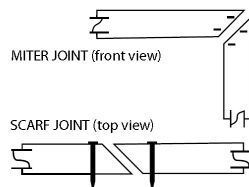


PAINTING

- WOLF Trimboards do not require paint for protection, but accept and hold paint very well.
- Clean surface prior to painting.
- Follow paint manufacturer's recommendations.
- If you choose to paint, use a 100% acrylic latex paint with colors having a Light Reflective Value (LRV) of 55 or higher.
- For darker colors (LRV of 54 or lower), use paints specifically formulated for use on vinyl/pvc products.
- Acrylic or urethane based latex exterior or interior paints are recommended.
- Prior to painting, exterior sandable spackle is recommended for filling nail holes.

GLUING/Touch Up

- For the best result, use Extreme Adhesives to glue all joints between trim pieces such as long fascia runs, window surrounds, etc., to prevent joint separation.
- Glue joints should be secured with fasteners on each side of the joint.



TOUCH UP

- Clean with a damp cloth with soap and water.
- Use Extreme Adhesives nail sticks on unpainted allocations.
- Use Fill n Flex for unpainted caulking applications.

DRILLING and ROUTING

- Use standard wood working drills and routers.
- Care should be taken to avoid frictional heat build-up.
- Periodic removal of shaving from the drill hole may be necessary.
- Carbide tipped router bits are recommended.
- If nailing products at 32° F or below, pre-drilling is required.

MOISTURE

- WOLF Trimboards do not absorb moisture, and can be installed at or below grade.
- It is perfect for use in moisture prone applications such as ground contact, masonry contact, hot tub surrounds, freeze boards, rooflines and garage door jambs, etc.

EXPANSION & CONTRACTION

- WOLF Trimboards expand and contract with changes in temperature. Allow 1/8" space per 18 foot for expansion and contraction. Joints between pieces should be glued to eliminate joint separation — see "Gluing" section.
- Properly fastening WOLF Trimboards along entire length will minimize expansion and contraction.
- 3/8" and 1/2" sheet product is not intended to be ripped into trim pieces. These profiles must be glued to a substrate and mechanically fastened.
- When gaps are glued on a long run of the board, allow suitable expansion and contraction space at ends of the run.
- Scarf joints are recommended to minimize seams and allow expansion and contraction.
- Construction adhesive is recommended to reduce expansion and contraction between trim and substrate.

SPANNING

- Never span WOLF Trimboards more than 24".
- Must not be used in load bearing applications, but may be used in spanned applications such as soffits and ceilings, with suitable thickness
- When using 1/2" WOLF Trimboard Beadboard, use 12" OC framing as well as use a high quality construction grade polyurethane adhesive on joists.
- For spans greater than 12" OC, use 5/8" WOLF Trimboard Beadboard, or use a minimum 1/2" backer such as plywood or OSB with construction grade adhesive and mechanical fastening a minimum of every 8". Fasteners should hit joist or framing when possible.

STORAGE AND HANDLING

- Store on a flat and level surface.
- Should be handled in a fashion as pine, because it has a density comparable to pine with more flexibility.
- Keep product free of dirt and debris

CLEANING

- WOLF Trimboards may be cleaned with denatured alcohol, mild detergent or soap and water. Other household cleansers may be used but should be tested in an inconspicuous area before use.

Part III—EXECUTION (continued)

3.02 Heat Bending

WOLF PVC Trim can be easily heated and bent into a variety of shapes. More time and money is spent when constructing the same shapes from wood, wood composite, plywood, and engineered wood products. Wood products must be routed, sanded, glued and finish coated to get the same results.

Some specific tools and equipment are required when bending WOLF PVC Trim. These includes hot air circulation ovens, band heaters, heating blankets or radiant heaters. Determining which equipment is right for your project depends on the shape, area, thickness and quantity.

Safety Warnings and Guidelines:

1. Bent material must be evenly headed.
2. We recommend heat of approximately 270°F, but not to exceed 320°F. If band heaters or heating blankets are used, a lower temperature approximately 250°F is recommended due to direct heat contact with the board.
3. Heat 3/4" x 3-1/2" WOLF PVC Trim for approximately 10 minutes in ovens or 15 minutes if using heat blankets (approximately 3 minutes per 1/4" thickness). Heating time should be adjusted according to the following conditions:
 - Thickness, width and length of board
 - Heating equipment and its capacity
4. Once the heated board reaches a workable state (flexible enough to bend), bend it to the proper mold and hold it in place with clamps for best results. Cool the bent product to room temperature with natural or forced air.
5. Indications of overheating are rough surfaces, bubbling, discoloration and yellowing.
6. Always handle with care and wear heat protection gloves during the process. Refer to our materials safety data sheet for material handling specifications.

MATERIAL SAFETY DATA SHEET



PVC TRIMBOARDS

Real performance. Real value.

MANUFACTURER

World-Pak Division, Inteplast Group, Ltd.
101 Inteplast Blvd., Highway 1593, Lolita, Texas 77971
Telephone: (361) 874-3760 Fax: (361) 874-3984
Emergency: 800-424-9300 (CHEMTREC)

MSDS No: WP-PVC Sheet

(Trimboards fabricated from Sheets)

Preparation Date: 04/10/2010
Supersedes Date: 03/25/2009

1. PRODUCT IDENTIFICATION

Product Name PVC Sheet
Product Code WOLF PVC Trim
Chemical Family Polymer of Chlorinated Hydrocarbon
Chemical Name Polyvinyl Chloride
CAS No. 9002-86-2
Synonyms Expanded Foam PVC Sheet, Integral Skin Expanded Foam PVC Sheet,
Celuka PVC Sheet, Wood/PVC Composite Sheet
Formula Proprietary
Technical Information 361.874.3760

2. PRODUCT INGREDIENTS

No.	Components	CAS No.	Percent (%)	OSHA PEL
1.	PVC	9002-86-2	50 - 100%	5 mg / M3 (respirable dust)
2.	Proprietary	Mixtures	0 - 50%	Not established

3. PHYSICAL / CHEMICAL PROPERTIES

Physical Form Solid Sheet
Color Finished sheet with colors specified
Odor Insignificant
Boiling Point Not applicable
Melting Point Not established
Freezing Point Not applicable
Solubility in Water None
Specific Gravity 0.4 - 2.0 (water = 1)
Vapor Density Not applicable (air = 1)
Evaporation Rate None (Butyl Acetate = 1)
Vapor Pressure Not applicable
% Volatile None
pH Not applicable

The physical data presented above are typical values and should not be construed as a specification.

4. FIRE HAZARD DATA AND FIGHTING METHOD

Flash Point Not applicable
Auto ignition Not applicable
Flammable Limits Not applicable
In Air (LEL, %) Not applicable
(UEL, %) Dry chemical, foam water, or carbon dioxide
Special Fire Fighting Procedure In the event of a fire, wear NIOSH approved, positive pressure, self-contained breathing apparatus (SCBA) and full protective clothing. Evacuate all personnel from danger area.
Use dry chemical, foam, water or carbon dioxide to extinguish fire.
Unusual Fire & Explosion Hazards This product is nonflammable and nonexplosive under normal conditions of use. It will not continue to burn after ignition without an external fire source. When forced to burn, the major gaseous products of the combustion of PVC are carbon monoxide, carbon dioxide, and hydrogen chloride.

WOLF

Real performance. Real value.

MATERIAL SAFETY DATA SHEET



PVC TRIMBOARDS

Real performance. Real value.

12. TRANSPORT INFORMATION

DOT Shipping Name Not listed
DOT Label Not applicable
DOT Hazard Class Not regulated
UN / NA Number Not applicable
Hazard Label(s) Not applicable

Hazard Placard(s) Not applicable
Packing Group Not applicable
Bulk Packaging Not applicable
RQ Not applicable
Emerg. Response Guide (ERG) No. Not applicable

13. TOXICOLOGICAL INFORMATION

The information provided below can be subject to misinterpretation. Therefore, it is essential that the following information be interpreted by individuals trained in its evaluation.

Chemical Toxicity Data

PVC orl-rat TDLo: 210 g/kg/30W-C:ETA

14. ECOLOGICAL INFORMATION

No data is available on the adverse effects of this product on the environment. Neither COD nor BOD data are available.

15. FEDERAL REGULATORY INFORMATION

OSHA Status Not listed
EPA Clean Air Act Status Not listed
EPA Clean Water Act Status Not listed
TSCA Status PVC is listed on TSCA Inventory (40 CFR710)
CERCLA RQ CERCLA RQ: Not listed

SARA Title III PVC

Section 302* None
Section 313** None
Section 311 / 312*** None

* Reportable quantity of extremely hazardous substance, Sec. 302

* Threshold planning quantity, extremely hazardous substance, Sec. 302

** Toxic chemical. Sec. 313

** Category as required by Sec 313 (40CFR372.65C). Must be used on Toxic Release Inventory form.

*** Hazard category for SARA Sec.311/312 reporting H1=acute health hazard, H2=chronic health hazard, P3=fire hazard, P4=sudden release of pressure hazard, P5=reactive hazard

RCRA Status:

The product is not an RCRA hazardous waste either by listing or by characteristic. However, under RCRA, it is the responsibility of the product user to determine at the time of disposal whether a material containing the product or derived from the product should be classified as a hazardous waste (40CFR261.20-24).

Other Regulatory Information:

The following chemicals are specifically listed by individual states; other product-specific health and safety data in other sections of the MSDS may also be applicable for state requirements. For details on your regulatory requirements, you should contact the appropriate agency in your state.

State	Chemical	Regulation
Texas	PVC	Effects Screening Level (ESL) List: short term 50 ug/M3; long term 5 ug/M3

California Proposition 65: warning – this product contains a chemical, residual VCM, known to the state of California to cause cancer

Product Name: PVC Sheet

International United Kingdom Occupational Exposure Standards: TWAs total inhalable dust 10 mg/M3 TWA;

Respirable dust 5mg/M3

Germany MAK Value: fine dusts 5 mg/M3 MAK

16. OTHER INFORMATION

NFPA HMIS
Fire - 1 Health - 0
Health - 0 Flammability - 1
Reactivity - 0 Reactivity - 0
Specific Hazard—none Personal Protection Index - E



Free Foam Technical Specifications

Free Foam Typical Properties (Based on 16 mm)

PROPERTY	TEST METHOD	UNIT	VALUE
PHYSICAL			
Specific Gravity	ASTM D 792	g/cm ³	0.55 - 0.60
Shore D Hardness	ASTM D 2240	D	45
MECHANICAL			
Flexural Strength @ Yield	ASTM D 790	psi	3,000
Flexural Modulus	ASTM D 790	psi	130,000
Dielectric Strength	ASTM D 149	kv/mm	12
THERMAL			
Heat Distortion Temperature	ASTM D 648	°F	130
Coefficient of Linear Expansion	ASTM D 696	in/in/°F	3.5 × 10 ⁻⁵
Thermal Conductivity	ASTM C 177	Btu in/hr ft ² °F	0.50

Flammability Standards

Other Property		Rating
UL 94	V0	Passed
UL 94	5V	Passed

Availability

	Standard	Custom
SIZE	4 ft × 8 ft (48" × 96")	Available upon request
COLOR	White	Available upon request
GAUGES (in millimeters)	10, 12, 12.7, 16, 19, 25	Available upon request

The information contained herein is true and accurate to the best of our knowledge. All recommendations and suggestions are made without guarantees. This information is to be used by individuals with technical skill at their own discretion and risk. Because conditions of use are beyond our control, World-Pak Division, Inteplast Group, Ltd. makes no warranties, expressed or implied, and assumes no liability in connection with the use of this information. Note: The above properties may vary slightly due to different sheet thickness. 07/07

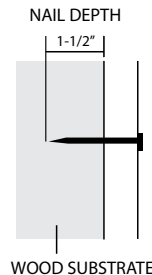
PVC TRIMBOARDS & MOULDINGS INSTALLATION GUIDELINES

CUTTING

- Use standard wood working equipment for cutting.
- Carbide tipped blades are recommended.
- Avoid using fine tooth metal cutting blades.
- Rough edge from cutting may be caused by excessive friction, poor board support, or improper tooling.

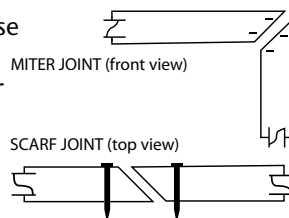
FASTENING

- Use standard nail guns or wood working tools.
- Stainless steel or hot-dipped galvanized nails/screws are recommended.
- Do not use brads, staples, wire nails or fine-threaded wood screws.
- Place nails and screws on center of board and keep approximately $\frac{3}{4}$ " from each edge.
- Fasteners should penetrate into flat, solid wood substrate or framing member a minimum of $1\frac{1}{2}$ ".
- If nailing product at 32°F or below, pre-drilling is required.
- Pre-drilling and/or counter-sink are typically not required unless a larger fastener is used.
- As with wood, use 2 fasteners per every framing member for trimboard applications. Trimboards 12" or wider, as well as sheets, will require additional fasteners not to exceed 8" on center.
- Fasteners must be installed within 2" of the end of each board.



PAINTING

- WOLF Trimboards do not require paint for protection, but accept and hold paint very well.
- Clean surface prior to painting.
- Follow paint manufacturer's recommendations.
- If you choose to paint, use a 100% acrylic latex paint with colors having a Light Reflective Value (LRV) of 55 or higher.
- For darker colors (LRV of 54 or lower), use paints specifically formulated for use on vinyl/pvc products.
- Acrylic or urethane based latex exterior or interior paints are recommended.
- Prior to painting, exterior sandable spackle is recommended for filling nail holes.



GLUING/TOUCH UP

- For the best result, use Extreme Adhesives to glue all joints between trim pieces such as long fascia runs, window surrounds, etc., to prevent joint separation.
- Glue joints should be secured with fasteners on each side of the joint.

TOUCH UP

- Clean with a damp cloth with soap and water.
- Use Extreme Adhesives nail sticks on unpainted allocations.
- Use Fill n Flex for unpainted caulking applications.

DRILLING AND ROUTING

- Use standard wood working drills and routers.
- Care should be taken to avoid frictional heat build-up.
- Periodic removal of shaving from the drill hole may be necessary.
- Carbide tipped router bits are recommended.
- If nailing products at 32° F or below, pre-drilling is required.

MOISTURE

- WOLF Trimboards do not absorb moisture, and can be installed at or below grade.
- It is perfect for use in moisture prone applications such as ground contact, masonry contact, hot tub surrounds, freeze boards, rooflines and garage door jams, etc.

EXPANSION & CONTRACTION

- Allow $\frac{1}{8}$ " space per 18 foot for expansion and contraction. WOLF Trimboards expand and contract with changes in temperature. Joints between pieces should be glued to eliminate joint separation — see "Gluing" section.
- Properly fastening WOLF Trimboard along its entire length will minimize expansion and contraction.
- $\frac{3}{8}$ " and $\frac{1}{2}$ " sheet product is not intended to be ripped into trim pieces. These profiles must be glued to a substrate and mechanically fastened.
- When gaps are glued on a long run of the board, allow suitable expansion and contraction space at ends of the run.
- Scarf joints are recommended to minimize seams and allow expansion & contraction.
- Construction adhesive is recommended to reduce expansion and contraction between trim and substrate.

SPANNING

- Never span WOLF Trimboards more than 24".
- Must not be used in load bearing applications, but may be used in spanned applications such as soffits and ceilings, with suitable thickness
- When using $\frac{1}{2}$ " WOLF Trimboard Beadboard, use 12" OC framing as well as use a high quality construction grade polyurethane adhesive on joists. – For spans greater than 12" OC, use $\frac{5}{8}$ " WOLF Trimboard Beadboard, or use a minimum $\frac{1}{2}$ " backer such as plywood or OSB with construction grade adhesive and mechanical fastening a minimum of every 8". Fasteners should hit joist or framing when possible.

STORAGE AND HANDLING

- Store on a flat and level surface.
- Should be handled in a fashion as pine, because it has a density comparable to pine with more flexibility.
- Keep product free of dirt and debris

CLEANING

- WOLF Trimboards may be cleaned with denatured alcohol, mild detergent or soap and water. Other household cleansers may be used but should be tested in an inconspicuous area before use.



PVC TRIMBOARDS LIMITED LIFETIME WARRANTY

WOODGRAIN PRODUCT

Subject to the terms, conditions and limitations stated herein, Kommerling USA, Inc. (hereinafter "Manufacturer") warrants to the original purchaser that, when subject to normal and proper use, each WOLF PVC Trimboard product (hereafter the "Products") will be free from manufacturing defects that cause the Product to rot, corrode, delaminate or excessively swell from moisture for the lesser of (i) a period of twenty-five (25) years from the date of the original consumer purchase from an authorized WOLF dealer or (ii) the period of time that the Product is owned by the original purchaser (the "Limited Warranty Period"). Each purchaser of the Product is solely responsible for determining the effectiveness, suitability and safety of any particular use or application of the product. Purchaser should consult local building and safety codes for specific requirements since building code regulations vary from area to area.

LIMITATIONS-CONDITIONS NOT COVERED BY THIS WARRANTY

Manufacturer's obligations under this warranty apply only to the original purchaser and are limited, in the Manufacturer's sole and exclusive option and discretion, to replacement of the defective Product (or portion thereof) during the Limited Warranty Period or refund the original cost of the defective Product only. In no event shall Manufacturer be liable for labor, installation, reinstallation, taxes or any other charge related to the defective Product. This warranty does not cover, and the Manufacturer is not liable for, damage or failure of the Product as a result of one or more of the following: intentional or unintentional misuse of or damage to the Product; abuse, impact of foreign objects; accident, dirt, sand, liquids, improper storage, acts of God; improper installation of the Product or related structural supports; failure to abide by all Manufacturer guidelines; movement, settlement, distortion, warping or cracking of the Product's structural supports or accessories used in connection therewith; physical abuse, vandalism, riot, insurrection, improper maintenance; wear, tear, damage incurred in transit, modifications, use of incompatible accessories or other products that cause a Product defect or failure to occur; pollution, acid rain, mold or mildew, application of chemicals or vapors applied to the Product; and ordinary and expected weathering due to exposure to the elements, which for purposes of this warranty is defined to include fading, chalking or darkening of the surface of the Product due to exposure to ultraviolet light and atmospheric conditions that are unique to or may vary in each geographic location. This warranty does not cover painted finishes, stains, or coatings applied to the Product by the original purchaser or any third party. Failure to adhere to the Manufacturer's recommended guidelines for application of painted surfaces shall void this warranty. All claims under this Limited Warranty must be made within 45 days from the time that the defect is discovered and while the Product is originally installed. Manufacturer shall be given a reasonable opportunity to inspect and test the Product, its installation and the environment in which it was used prior to removal. Failure to comply with this notice and inspection provisions shall void all warranties with regard to the Product. This warranty may not be altered or amended except in a written instrument signed by Manufacturer and original purchaser. No dealer or other person or entity is authorized by the Manufacturer to make statements or representations regarding the performance of the Product except as contained in this Warranty, and the Manufacturer shall not be bound by any such statements other than those contained herein. This warranty only applies to the original property and original purchaser and shall not be assignable or transferable by the purchaser.

EXCEPT FOR THE LIMITED WARRANTY SET FORTH ABOVE, THE MANUFACTURER MAKES, NO AND DISCLAIMS, ALL OTHER REPRESENTATIONS, GUARANTIES, CONDITIONS, AND WARRANTIES CONCERNING THE PRODUCTS, WHETHER DIRECT OR INDIRECT, EXPRESS OR IMPLIED, OR ARISING UNDER ANY STATUTE, ORDINANCE, COMMERCIAL USAGE OR OTHERWISE, INCLUDING BUT NOT LIMITED TO ANY WARRANTY OR REPRESENTATION AS TO THE SUITABILITY, DURABILITY, DESIGN, OPERATION, OR CONDITION OF THE PRODUCTS (OR ANY PART THEREOF) OR THE MERCHANTABILITY OF THE PRODUCTS OR THEIR FITNESS FOR A PARTICULAR PURPOSE, OR RELATING TO THE INFRINGEMENT OF ANY PATENT, COPYRIGHT, OR OTHER PROPRIETARY RIGHT USED OR INCLUDED THEREIN. IF ANY IMPLIED WARRANTIES APPLY AS A MATTER OF LAW, THEY ARE LIMITED IN DURATION TO THE LENGTH OF THIS LIMITED WARRANTY. SOME STATES MAY NOT RECOGNIZE A DISCLAIMER OR LIMITATION OF WARRANTIES AND/OR LIMITATION OF LIABILITY SO THE ABOVE DISCLAIMERS AND EXCLUSIONS MAY NOT APPLY. THE CUSTOMER MAY ALSO HAVE DIFFERENT AND/OR ADDITIONAL RIGHTS AND REMEDIES THAT VARY FROM STATE TO STATE.

The customer acknowledges and agrees that the manufacturer shall not be responsible for any damages that the customer may incur from delayed shipment, product failure, product design, selection, or production or from any other cause, whether liability is asserted in contract, tort (including negligence and strict product liability) or otherwise. In no event shall the manufacturer be liable for any indirect, incidental, consequential, punitive, exemplary, treble or special damages of any kind (including without limitation loss of profits or loss of use), whether or not the manufacturer shall be or should be aware of the possibility of such potential loss or damage. The Products were not intended, designed, or tested for use in load bearing or structural applications and should not be used as a replacement for wood or other building materials. Such improper use could result in application failure to the user and/or property damage.

WARRANTY CLAIMS

If a covered defect occurs within the Limited Warranty Period, the original purchaser must notify the Manufacturer in writing, which shall include the original proof of purchase, invoice or receipt identifying the Products, place of purchase, and identity of the original purchaser, a picture of the defective Product and a written description detailing the nature of the defect, and a copy of the claimant's photo identification to:

KOMMERLING USA, INC. / Attention: KOMA Technical Services Manager, 3402 Stanwood Blvd • Huntsville, AL 35811 •

1.800.330.2239 • Fax: 256.859.7562 Manufacturer reserves the right to investigate any claim hereunder and reject non-conforming and ineligible claims without notice to the customer. Upon verification of a claim, Manufacturer shall, at its sole and exclusive option, either arrange for the delivery of replacement Product or issue a refund equal to the original cost of the defective Product only. The Manufacturer will make endeavor to review claims within.

SMOOTH PRODUCT

For your protection, all WOLF Trimboards, as manufactured by Inteplast Group, Ltd. (IPG), are backed by a lifetime warranty from IPG. The warranty is limited to the lifetime of the original purchaser for as long as he/she owns the property on which the product is applied. If the property to which the WOLF Trimboard product is applied is a condominium, or is owned by a party other than a resident owner, including corporations, partnerships, unincorporated associations, churches, schools, government or public entities, etc., the warranty period is (30) years. If, during this warranty period, the product is found to rot, delaminate, crack, split, check, excessively swell, or become infested with termites, IPG will, at its sole and absolute discretion, provide replacement product, refund purchase price with 30 years prorate, or repair the affected product. In no instance will the cost of the remedy to IPG exceed the original purchase price of the affected product. In all cases, the product must be installed in accordance with its printed installation instructions in a workmanlike manner.

CLAIMS

In order to make a warranty claim, and before IPG's obligation under the warranty will commence, the original purchaser must

1. Within 30 days of discovering a defect believed to be covered by this warranty, notify IPG in writing to Inteplast Group, Ltd./ World-Pak Division, 9 Peach Tree Hill Rd. Livingston, NJ 07039, giving full particulars, including photographs and the original receipt, in support of the claim.
2. Make available for inspection by IPG or its representative, the product believed to be defective, and if requested, ship the product prepaid to IPG at the above address.

EXCLUSIONS

The warranty is limited to the foregoing and does NOT apply to product which was not installed in accordance with IPG's installation instructions or installed in less than a workmanlike manner, product which has been structurally altered, damage caused by fire, flood, lightening, windstorm, hurricane, tornado, earthquakes or other acts of God, product which has been put in unusual service, or used for purpose for which it was not designed, normal and expected weathering of the surface, and fading, peeling, discoloring or other defects of finishes applied by parties other than IPG, the cost of labor, materials or the expenses incidental to the repair, removal, installation or replacement of the warranted product, product which has not been stored in accordance with IPG's instructions, product which has been damaged during shipment, storage, handling, or installation, any personal injuries or damage to property resulting from the installation, use or failure of the product. (The original purchaser assumes the risk of all such injuries or damage.)

DISCLAIMER

The warranty is in lieu of all expressed and/or implied warranties of merchantability or of any other kind. Remedies under this warranty, as set forth herein, are at the exclusion of all others (except as to the extent required by any applicable law), and IPG neither assumes nor authorizes anyone to assume for it any other obligations. In no event shall IPG be liable for any remote, incidental or consequential damages of any nature, no matter how arising. Nor shall IPG be liable for any amounts in excess of the original purchase price, for parts found to be defective. Some states do not allow the exclusion or limitation of special, incidental or consequential damages, so the foregoing may not apply to you. This limited warranty gives your specific legal rights, and you may also have other rights which vary from state to state.



HARVEY
BUILDING PRODUCTS

PVC Products





HARVEY PVC EXTERIOR TRIM KITS

- Compatible with all brand windows
- Available for rectangular units only
- Pre-fabricated, glued & fastened joints
- Paintable
- Minimal surface nailing required
- Available with sill nose (shown) or picture frame setup, please specify when ordering



Brickmould (908)



Brickmould (908)
with J



1x4 Flat



1x6 Flat



5/4 x 4 Flat



5/4 x 6 Flat



5/4 x 4 with J



5/4 x 6 with J



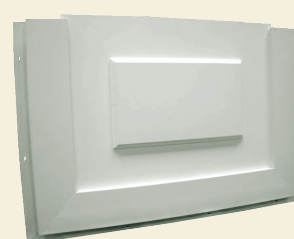
1x4 with Backband



1x6 with Backband



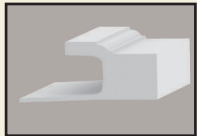
5/4 x 4 with
Ram's Crown



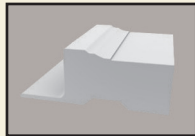
Window Panel

HARVEY PVC MILLWORK - STOCK PROFILES

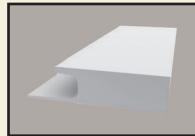
- No paint needed, but can be painted
- Workable – can route, miter & shape
- Ground contact applications
- Limited lifetime warranty
- Sold in full pieces only



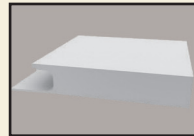
J-Channel Brickmould
WM180JF
Item #519275711
7' length



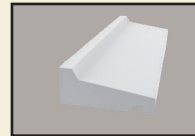
Brickmould w/nail fin
WM180F
Item #519275710
12' length



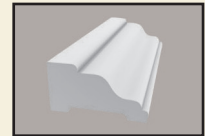
5/4 x 4 J-Channel Casing
Item #519275734
12' length



5/4 x 6 J-Channel Casing
Item #519275736
12' length



Drip Cap WM197
Item #519275760
12' length



Rake WM287
Item #519275753
12' length



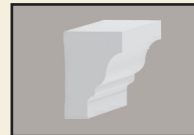
3-5/8" Crown WM49
Item #519275741
12' length



4-5/8" Crown WM47
Item #519275740
12' length



Pediment
Item #519275750
12' length



Ram's Crown WM6934
Item #519275742
12' length



Backband WM6931
Item #519275755
12' length



Base Cap WM164
Item #519275762
12' length



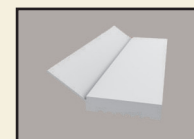
Quarter Round WM105
Item #519275757
12' length



Scotia WM93
Item #519275763
12' length



Replacement Sill
4': Item #519275702
7': Item #519275703



ThermoStop
7': Item #519275767
9': Item #519275769



Sill Nose
Item #519275721
12' length



Historic Sill Nose 2"
Item #519275990
16' length



A/C Sill Adaptor
Item #519275701
1-1/2" x 1-1/4" x 42"
cut to size in the field



Beadboard NEW
Shiplap Profile allows for a
cleaner installation
Item #519275770
18' length

HARVEY PVC MILLWORK - TRIM BOARDS, SHEETS, BEADBOARD

- Sealed edge
- No paint needed, but can be painted
- Dimensionally stable

- Workable - can route, miter & shape
- Ground contact applications
- Limited lifetime warranty



18' boards

1" x 3"	519275503
1" x 4"	519275504
1" x 5"	519275505
1" x 6"	519275506
1" x 8"	519275508
1" x 10"	519275510
1" x 12"	519275512

18' boards

5/4" x 4"	519275604
5/4" x 5"	519275605
5/4" x 6"	519275606
5/4" x 8"	519275608
5/4" x 10"	519275610
5/4" x 12"	519275612

Beaded Boards - lap style

1/2" x 6" x 18'

Routing is available for 5/4 boards only

Sheets (smooth)

1/2" x 4' x 8'	519275002
3/4" x 4' x 8'	519275003

Beaded Sheets

1/2" x 4' x 8' Edge & Center Bead Sq Edge

Available with short lead times

12' Smooth Boards

1" x 4"
1" x 5"
1" x 6"
1" x 8"
1" x 10"
1" x 12"

12' Woodgrain Boards

1" x 4"
1" x 6"
1" x 8"
1" x 10"
1" x 12"
5/4" x 4"
5/4" x 6"
5/4" x 8"
5/4" x 10"
5/4" x 12"

18' Smooth Boards

1" x 16"
5/4" x 16"

20' Smooth Boards

5/4" x 4"
5/4" x 5"
5/4" x 6"
5/4" x 8"
5/4" x 10"
5/4" x 12"

Beaded Boards

5/8" x 4" x 18'

18' Woodgrain/Smooth Boards

1" x 4"
1" x 6"
1" x 8"
1" x 10"
1" x 12"
1" x 16"
5/4" x 4"
5/4" x 5"
5/4" x 6"
5/4" x 8"
5/4" x 10"
5/4" x 12"
5/4" x 16"

20' Woodgrain/Smooth Boards

5/4" x 4"

Corners - Woodgrain

5/4" x 4" x 10'
5/4" x 6" x 10'
5/4" x 4" x 20'
5/4" x 6" x 20'

Sheets

3/8" x 4' x 8'
3/8" x 4' x 10'
1/2" x 4' x 10'
5/8" x 4' x 8'
5/8" x 4' x 8'
5/8" x 4' x 18'
3/4" x 4' x 10'
3/4" x 4' x 18'
1" x 4' x 8'
1" x 4' x 10'
1" x 4' x 20'



HARVEY
BUILDING PRODUCTS

HARVEY AND WOLF PVC MILLWORK

Stock corners



5-1/2" Siding Corner
- Smooth w/Nail Fin
Item #519275768
5-1/2" sq. x 19-1/2'



5-1/2" Siding Corner
- Smooth w/J
Item #200004831
5-1/2" sq. x 20'

Custom corners

Available in 20' lengths; 5/4 stock
Two edge options:

- Square edge with or without nail fin
- Routed edge with or without nail fin

Cut to length service is available

Specify outside dimension needed



Shown with nail fin and
optional routed edge

Wolf™ Column Wraps

- Quick, easy installation around structural posts
- Patent-pending snap design
- PVC wrap eliminates peeling and rotting
- Collars and moulding for a more finished look
- 5-Year warranty
- Available in four sizes

Wraps

Wraps	Actual Inside Dimension	
4" x 4" x 8-1/2"	3-3/4" x 3-3/4" x 8'6"	200043964
4" x 4" x 10"	3-3/4" x 3-3/4" x 10'	200043965
6" x 6" x 8-1/2"	5-3/4" x 5-3/4" x 8'6"	200043966
6" x 6" x 10"	5-3/4" x 5-3/4" x 10'	200043967

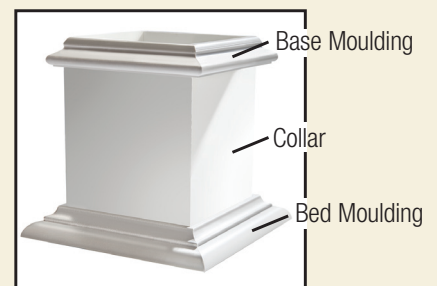
Collars

Collars	Profile	
4" Column Wrap Collar	4-3/4" x 8"	200043974
6" Column Wrap Collar	5-3/4" x 12"	200043975

Moulding

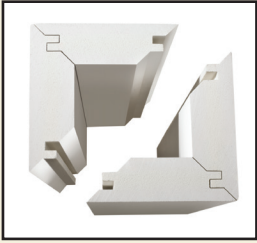
4" Bed Moulding Trim Kit	200043968
4" Base Cap Moulding Trim Kit	200043969
4" Bed Moulding Trim Kit XL (for use around collars)	200043970
6" Bed Moulding Trim Kit	200043971
6" Base Cap Moulding Trim Kit	200043972
6" Bed Moulding Trim Kit XL (for use around collars)	200043973

- Each kit contains 4 pieces of moulding and corner connectors mitered and notched for quick easy assembly.



HARVEY
BUILDING PRODUCTS

CUSTOM COLUMN WRAPS, SLEEVES, SKIRT BOARDS



Column Wraps

Available in 10' and 20' lengths; 3/4" Stock shipped as two halves, assembled on site. Specify inside dimension needed. Cut to length service is available. Custom sizes are available.

Standard Sizes:
(Actual inside dimension)

4"
5-3/4"
7-3/4"
9-3/4"*

*Maximum inside dimension



Skirt Board

8" Overall height
3/4" Thickness
20' length
519275704

PVC BENDING

We can bend boards and moulding to your specifications; please provide a template.

Available board sizing

1" boards: 1 x 3, 1 x 4, 1 x 5, 1 x 6, 1 x 8, 1 x 10

5/4" boards: 5/4 x 4, 5/4 x 5, 5/4 x 6, 5/4 x 7

We also bend 908 (brickmould) casing.

Optional mouldings can be added to flat trim boards for a more built-up profile:



Ram's Crown



Pediment



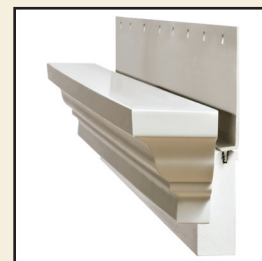
Backboard



Our Nashua, NH Millwork Shop

WINDOW PEDIMENTS

- Designed to fit into windows and doors with factory applied J-Channel casing
- Built-in J for an easy and clean installation
- No face nailing required
- Allows for a secondary layer of flashing
- Full mitered returns
- Solid PVC



Ram's Crown



Pediment

Window pediments also available for stand-alone radius units and radius units with flanker combinations.

PVC MILLWORK ACCESSORIES

Cortex Fasteners for PVC Trim

50 ft kit smooth (100 plugs)

250 ft kit smooth (400 plugs)

750 ft kit smooth (1200 plugs)



PVC TrimWelder - Fast Cure Structural

50ml cartridge

519276050

PVC TrimWelder - Fast Cure Structural

220ml cartridge

519276052

PVC TrimWelder - Slow Cure Structural

50ml cartridge

519276054

PVC TrimWelder - Slow Cure Structural

220ml cartridge

519276056

PVC TrimWelder - Nail Sticks

4 oz. tube

519276058

PVC TrimWelder - Fill & Flex PVC Adhesive Sealant

tube

519276060

PVC TrimWelder - Cox Dispense Gun (Manual)

50ml

519276066

PVC TrimWelder - Cox Dispense Gun (Manual)

220ml

519276068

OSI TRIMTEQ™ SYSTEM

TeQMount® designed to mount cellular PVC trim to the home

10 oz

200014476

TeQBond® designed to adhere miter and scarf joints

4 oz

200014477

TeQFasteners® concealed system designed to mechanically fasten & fill holes (Includes 150 2-3/4" screws, 200 pvc plugs, 2 setting tools)

200014478

PVC FASTENERS

2" PVC White Stainless Steel Nails

1 lb bxs

519240020

2-1/2" PVC White Stainless Steel Nails

1 lb bxs

519240025

GRK 2-1/2" composite screws

100/pk

519240026

#10 1" Star Bit

2 bits/pk

519240027



HARVEY
BUILDING PRODUCTS

About Harvey Building Products

Harvey has built a solid reputation as a leading manufacturer and distributor of quality building products. A family-owned and operated business with over 50 years' experience, Harvey Building Products is known for outstanding craftsmanship and superior service as well as standing behind every product we make. In addition to manufacturing durable, attractive windows, doors and patio rooms, Harvey distributes a full line of highly respected building products to professional contractors and builders throughout the Northeast.

We understand what it takes to be part of your home.™



Harvey Building Products
1400 Main Street
Waltham, MA 02451-1623 USA
800-9HARVEY (800-942-7839)



Information about Harvey Building Products and our products and services can be found at harveybp.com.

