

**FLOWER & SOUL
894 PLYMOUTH STREET
HALIFAX, MASS. 02338**

Security Overview

INTRODUCTION

Flower and Soul, shall implement sufficient safety and security measures to deter theft of marijuana and marijuana products, prevent unauthorized access to the Marijuana Establishment, unauthorized entrance into areas containing marijuana, and ensure the safety of its employees, consumers, customers and the general public. The Flower & Soul security measures shall be designed to protect the premises, employees, consumers, marijuana establishment agents, the general public and the community and provide a safe environment for the safe and discreet dispensing of marijuana and marijuana products. The Flower & Soul shall implement policies and procedures designed to avoid diversion, theft, or loss of marijuana and marijuana products.

The Flower & Soul's security policies shall be established in accordance with the requirements under 935 CMR 500.110, and shall include, but not be limited to the details outlined in this document and contained in the addendum.

The Flower & Soul Security Plan details extensive security provisions in compliance with those published by the Cannabis Control Commission (CCC). Measures to deter and prevent unauthorized entrance into areas containing cannabis and theft of cannabis at Flower & Soul. Access to Flower & Soul facilities is limited to agents and those persons allowed access by the CCC regulations. The policies established here will be strictly enforced, as Flower & Soul operates in a high-risk security environment.

Flower & Soul will have a security system to prevent and detect diversion, theft or loss of cannabis or unauthorized intrusion. The facility will prominently display security system and time-lock safe notification signage. Commercial grade equipment will be utilized, including alarm systems in compliance with the CCC regulations and an adequate failure notification system. Video cameras will be installed in all areas that may contain cannabis, at all points of entry and exit and any parking lot and will be angled to allow for the capture of clear and certain identification of any person entering or exiting the facility or area. Commercial high lumen fixtures sufficient to facilitate surveillance will be used to light the exterior of each facility and it is ensured that trees, bushes and other foliage outside of the facility will not allow for a person or persons to conceal themselves from sight.

Procedures contained here include measures to aid the development of strong partnerships with local law enforcement agencies, prevent unwanted individuals from remaining on premises and ensure compliance with the CCC regulations for cannabis disposal. Limited access areas are accessible only to authorized agents and all finished cannabis will be stored in a secure, locked safe or vault and in such a manner as to prevent diversion, theft, and loss.

The Flower & Soul will maintain a list of non-emergency police department contacts for the facility. Flower & Soul will maintain regular communication with each contact advising of any changes in security procedures and to develop strong partnerships with the local

law enforcement agencies. Flower & Soul shall engage these agencies to support the Flower & Soul's security mission through collaborative training.

All written safety and security measures developed under 935 CMR 500.105(7) will be treated as security planning documents, the public disclosure of which would jeopardize public safety. Flower & Soul is happy to meet with the Police department to review all SOP.

SECURITY PLAN

Access to the Premises

Flower & Soul will implement security protocols and procedures to limit access to the licensed premises to only individuals that have been positively identified as 21 years of age or older. Loitering will be strictly prohibited. All entrances to the facility will be clearly marked and secured with commercial grade locks, alarms and remain under clear surveillance 24 hours a day, 7 days a week to prevent unauthorized access. Access to the premises will be through a main door into a waiting area where ID's will be checked before accessing the retail floor through a second secure door.

Limited Access Areas

Flower & Soul will designate limited access areas by posting clearly visible signs, no smaller than 12" x 12" and which state: "Do Not Enter-Limited Access Area-Access Limited to Authorized Personnel Only" in lettering no smaller than one inch in height. Limited access areas will only be accessible to specifically authorized personnel limited to include only the minimum number of employees essential for efficient operation. Furthermore, limited access areas will be restricted to employees, agents or volunteers specifically permitted by the Marijuana Establishment, agents of the CCC, state and local law enforcement and emergency personnel. All limited access areas will be clearly described by the filing of a diagram of the premises reflecting entrances and exits, walls, partitions, offices, vault, storage, and retail sales areas.

Flower & Soul will require all employees to wear employee identification badges at all times while inside the marijuana establishment. The Flower & Soul will also require all contractors, vendors and other allowed personnel under the CCC regulations to wear identification badges.

Visitor Policy

All outside vendors, contractors and visitors will be logged in and out, and Flower & Soul will maintain this log and make it available to the CCC and local law enforcement for periodic inspection. Prior to entering a limited access area, vendors, contractors and visitors will obtain a visitor badge and will be escorted at all times by a marijuana establishment agent authorized to enter the limited access area. Visitor badges will be visibly displayed at all times while the visitor is in any limited access area. Flower & Soul will ensure that all visitor identification badges are collected before visitors leave the premises.

Identification Badge Required

Each agent, contractor and visitor must be in possession of an identification badge when on Flower & Soul property and is responsible for the safekeeping of his or her badge. The purpose of the identification badge policies and procedures is to enhance the security and safety of Flower & Soul agents, customers, physical and financial assets.

Types of Badges

Agents are issued license cards by the CCC, which serve as their identification badge. Temporary identification badges which serve as a temporary replacement identification for an agent who has reported a lost or stolen badge. Contractors must be issued a contractor badge and visitors must be issued a visitor badge.

Visitor Badge

All visitors to the Flower & Soul facility are required to sign in and receive a visitor's badge if they will be accessing limited access areas of these facilities. The agent providing access must ensure the Visitor Log is properly updated and the policies herein are followed. The onboarding training will ensure all agents are trained to issue visitor badges to visitors entering the Flower & Soul facility. Visitors should be instructed to wear their badge properly while in limited access areas. Visitors may not take their badge off-site.

Agent Badge

All agents must wear their CCC issued occupational license or registration card when in the Flower & Soul facility. Only Flower & Soul issued badge display devices (lapel/pocket clips, armbands, and lanyards) are allowed.

The badge must be worn above the waist and be visible at all times to others while in the Flower & Soul facility. While performing work in other areas, agents are required to have their badges readily available.

Temporary Badge

Any agent who forgets his or her license identification card should immediately notify the Manager to obtain a temporary badge.

Contractor Badge

A contractor is a vendor, supplier, professional service representative or consultant (contractor) who has management approved business with the Flower & Soul. Contractors are required to sign in and receive an identification badge if they will be accessing limited access areas of any facility. Contractors who will be in the facilities for only one day or less will be provided a Visitor Badge. All agents must be trained to issue visitor badges to contractors entering the Flower & Soul facility. Contractors should be instructed to wear their badges properly while in limited access areas of the Flower & Soul. An agent must continuously escort all contractors while in limited access areas.

Security and Alarm Requirements

Flower & Soul will ensure that all outdoor areas of the facility are properly secured against unauthorized access (Exhibit A). Measures taken by Flower & Soul will include clear signage designating the area as a limited access area, commercial-grade locks, security alarms, and video cameras. The security alarm system will be continuously monitored by a third party and will alert employees of Flower & Soul within five minutes of a system failure. Flower & Soul will install video cameras at all entrances and exits as well as in any parking lot. Flower & Soul will ensure that all video surveillance footage is maintained in accordance with 935 CMR 500.110, can produce clear still photos with a date and time stamp embedded in all recordings, and can be stored in a standard format. 24-hour recordings from all video cameras will be made available for immediate viewing by the CCC or local law enforcement. Recordings are retained for at least 90 calendar days and will not be destroyed or altered. Recordings are retained as long as

necessary if Flower & Soul is aware of a pending criminal, civil or administrative investigation or legal proceeding for which the recording may contain relevant information. Flower & Soul will ensure that the security equipment is in good working order and will be inspected and tested at regular intervals, not to exceed 30 calendar days from the last test. On an annual basis, Flower & Soul will obtain a security audit by a vendor approved by the CCC. The security audit report will be provided to the CCC and local law enforcement within 30 days of conducting the audit.

The interior of the establishment shall have video cameras in all areas that contain marijuana and directed at all safes, vaults, and sales areas (Exhibit B). All cameras shall be angled as to allow for the capture of clear and certain identification of any person entering or exiting the establishment. Flower & Soul facility will be equipped with a perimeter alarm on all building entry and exit points and perimeter windows. A duress, panic or hold up alarm connected directly to local public safety or law enforcement authorities will be installed in the vault, check-in and point of sale areas, at a minimum. Flower & Soul's security and alarm system will remain operational during a power outage.

Security alarm monitoring is a computer-based system that electronically listens to a variety of security sensors. Security alarms will be protected by cellular back-up. Alarm points will include:

Door Position Switches

Monitors intrusion or unauthorized propping of a door. Locations include perimeter doors, critical utility areas, grow/production areas, electronic access control doors, stairwell doors and roof access.

Intrusion Sensors

Motion detectors, glass break and a variety of other security sensors that monitors intrusions. Locations include first level windows and any other accessible perimeter windows, special storage areas, accessible window fronts, operable utility openings, and product storage vaults.

Emergency Alarms

Devices that can be activated by an agent in need of immediate assistance. An activated alarm summons immediate help because of an adverse or life-threatening emergency. Locations include reception desks, distribution areas, and product storage vaults.

The intrusion system portion of the integrated security system includes duress alarm feature, a silent security alarm system signal generated by a designated code entry to signal that the alarm user is being forced to turn off the system. The system also includes panic alarms, which emit an audible security alarm system signal from manual activation intended to signal a life-threatening or emergency situation requiring a law enforcement response. The integrated security system will also have a holdup alarm, which can send a silent alarm signal, generated by a manual activation intended to signal a robbery in progress, to local law enforcement.

The integrated security system includes an automatic voice dialer capable of being programmed to send a prerecorded voice message to law enforcement, public safety or an emergency services agency requesting dispatch. The system also features a failure notification system providing audible, text or visual notifications. The integrated security system and all of its components will be on an Uninterruptable Power Supply (UPS),

either local or building system and will have the ability to remain operational for up to twenty-four hours during a power outage.

Flower & Soul will demonstrate to the CCC and local law enforcements satisfaction the safeguards that are in place to ensure continuous operation of a security system. All security system equipment and recordings will be maintained in a secure location to prevent theft, loss, destruction and alterations. Access to security system equipment and recordings will be limited to the authorized agents requiring access in accordance with their operational responsibilities.

Flower & Soul will work with local law enforcement to ensure they have access and/or live feeds of the security system to the extent allowed under CCC regulations.

Waste Disposal

All trash containing marijuana or marijuana products is required to be stored securely on site within the dispensary vault. The products will be securely transported back to the licensed cultivation and product manufacturing facility from which they emanated, and where they will be disposed of safely. Minimal amounts of non-marijuana business related waste will be generated from the facility and disposed of by commercial trash pickup. In accordance with Flower & Soul waste disposal policies and procedures, all waste will be disposed of in compliance with 935 CMR 500.105(12). A minimum of two marijuana establishment agents will be present and properly document the disposal of marijuana waste in accordance with 935 CMR 500.105(12)(d).

Storage and Facility Security

All finished marijuana and marijuana products will be securely stored in a locked safe or vault accessible to a limited number of authorized individuals to prevent diversion, theft or loss. Flower & Soul safes and vaults and any other equipment or areas used for the storage of marijuana and marijuana products will be securely locked. In accordance with Flower & Soul's security policies and procedures, the safes, vaults and any other areas or equipment aforementioned will be securely locked using commercial grade equipment and protected from entry, except for the actual time required to remove or replace marijuana. All locks and security equipment in good working order. Keys, if utilized, will be prohibited from being left in locks and stored or placed in an area accessible to persons other than specifically authorized personnel. In addition, Flower & Soul will maintain a list of individuals with access to keys and a policy for key issuance and lock replacement. Security measures will be strictly limited to specifically authorized marijuana establishment agents including accessibility of combination numbers, passcodes, electronic or biometric security systems.

Product Delivery Security

Product deliveries will occur between two and three times each week in unmarked vans, such as a Ford transit. Pursuant to 935 CMR 500.105, there will be no advertising, markings, or branding indicating that the vehicle is being used to transport marijuana. Routes and times used for the transportation of marijuana and marijuana products are randomized. Marijuana and marijuana products will be transported in secure, locked storage compartments that are a part of the vehicle transporting the marijuana products and cannot be easily removed. At least two agents will staff vehicles transporting marijuana. One agent will remain in the vehicle at all times, and the other will be accompanied by a dispensary staff member into the facility and within the vault through the entry area designated for staff.

Emergency Policies and Incident Reporting

Flower & Soul will develop emergency policies and procedures for securing all product following any instance of diversion, theft or loss of marijuana, and conduct an assessment to determine whether additional safeguards are necessary. All security policies and procedures will be shared with local law enforcement authorities and fire services and periodically if the plans or procedures are modified in a material way. Flower & Soul will immediately notify law enforcement authorities and the CCC of any security breach including, but not limited to, discovery of discrepancies identified during inventory, diversion or loss of any marijuana product, any criminal action involving or occurring on or in the Marijuana Establishment premises, any loss or unauthorized alteration of records related to marijuana, suspicious actions involving the sale, of marijuana by any person, unauthorized destruction of marijuana, failure of an alarm system due to a loss of electrical power or mechanical malfunction that is expected to last more than eight hours, activation of an alarm system or other event that requires response by public safety personnel or security personnel, or any other breach of security. Notification will be immediate, and in no instances, more than 24 hours after the incident occurs. Flower & Soul will provide written notice in the form of an incident report to the CCC within ten calendar days of any incident described in 935 CMR 500.110(7)(a). Flower & Soul will maintain records and documentation of any reportable incident for at least one year or the duration of an open investigation, whichever is longer, made available to the CCC and local law enforcement upon request.

Exhibit A

6 Cameras currently monitor the building 24/7



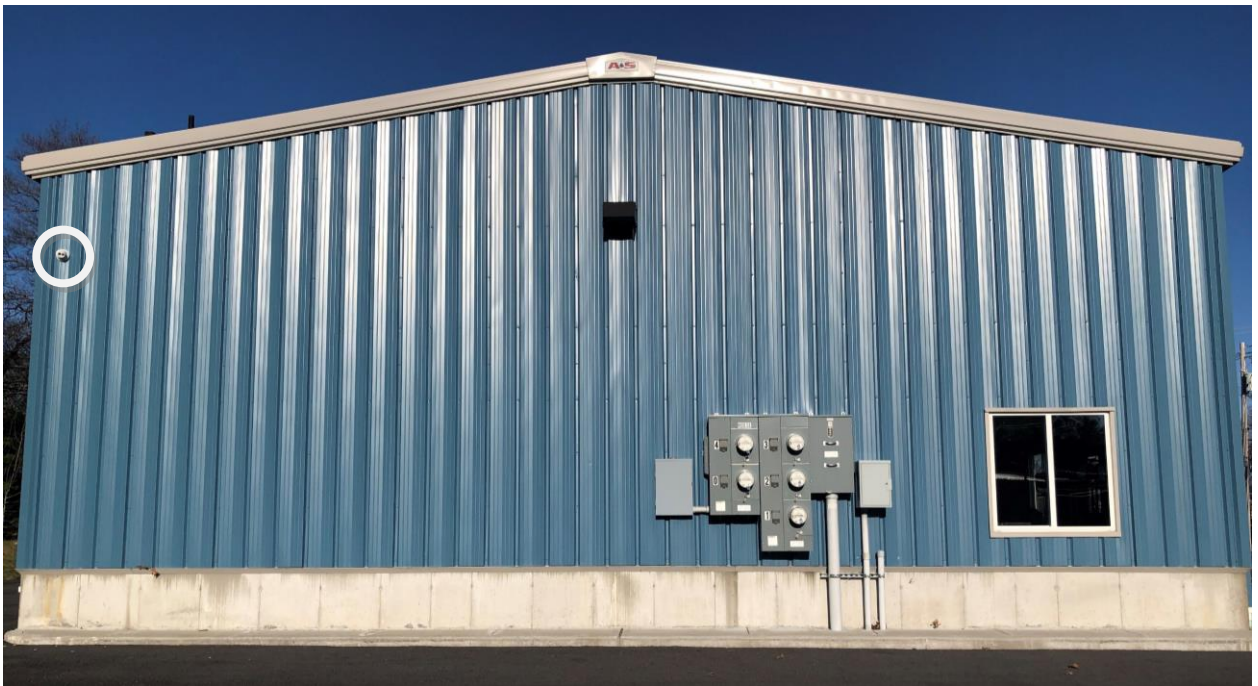
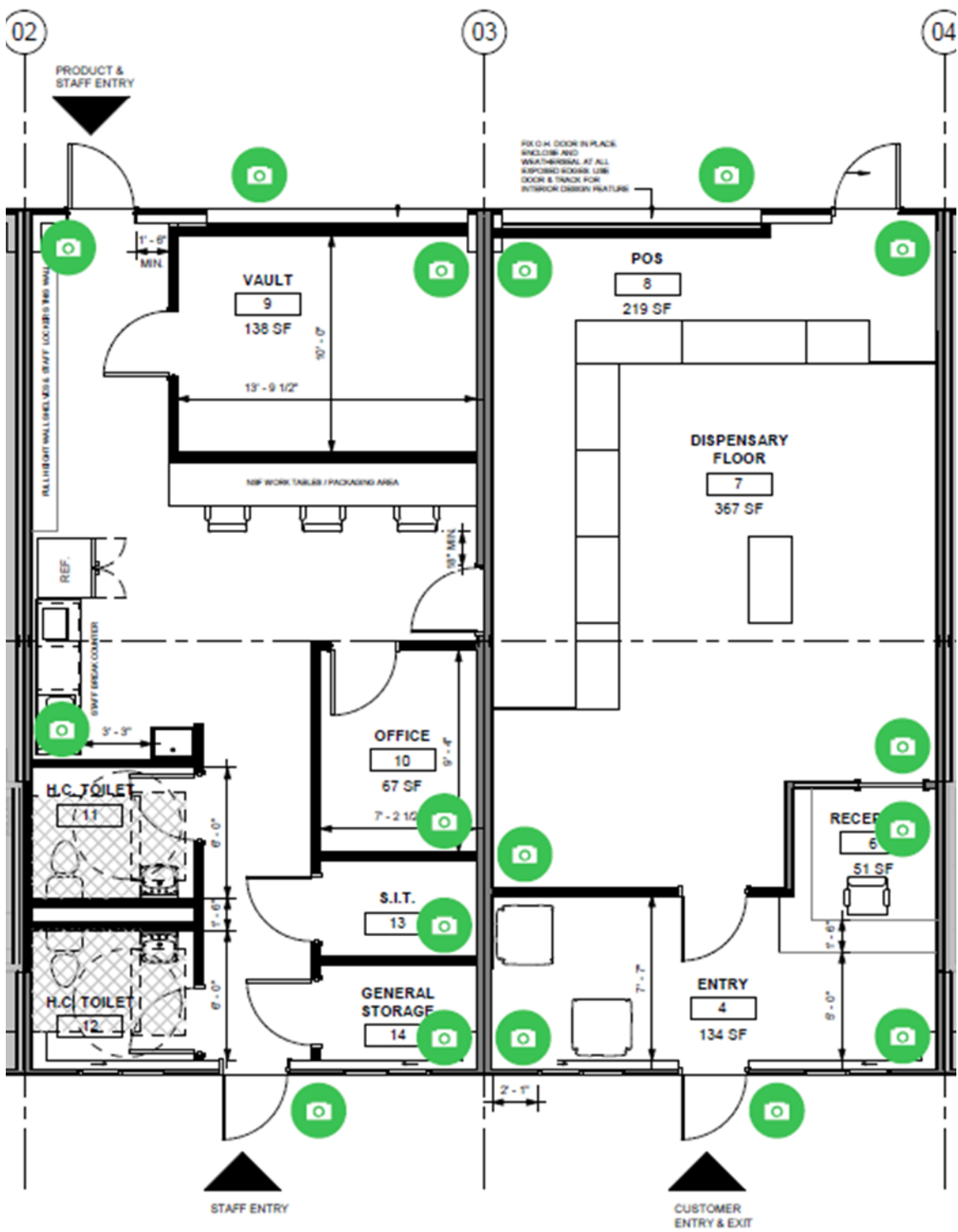


EXHIBIT B

Security Cameras within the retail dispensary and employee space



Addendum – Security Process and related CCC regulations

1. Positively identify individuals seeking access to the premises of the Marijuana Establishment or to whom marijuana or marijuana products are being transported pursuant to 935 CMR 500.105(14) in order to limit access solely to individuals 21 years of age or older;
2. Adopt procedures to prevent loitering and ensure that only individuals engaging in activity expressly or by necessary implication permitted by 935 CMR 500.000: *Adult Use of Marijuana* and its enabling statute are allowed to remain on the premises;
3. Dispose of marijuana in accordance with 935 CMR 500.105(12) in excess of the quantity required for normal, efficient operation as established within 935 CMR 500.105;
4. Secure all entrances to the Marijuana Establishment to prevent unauthorized access;
5. Establish limited access areas pursuant to 935 CMR 500.110(4), which, after receipt of a final license from the Commission, shall be accessible only to specifically authorized personnel, limited to include only the minimum number of employees essential for efficient operation;
6. Store all finished marijuana products in a secure, locked safe or vault in such a manner as to prevent diversion, theft and loss;
7. Keep all safes, vaults, and any other equipment or areas used for the production, cultivation, harvesting, processing (as applicable) or storage, including prior to disposal, of marijuana and marijuana products securely locked and protected from entry, except for the actual time required to remove or replace marijuana;
8. Keep all locks and security equipment in good working order;
9. Prohibit keys, if any, from being left in the locks or stored or placed in a location accessible to persons other than specifically authorized personnel;
10. Prohibit accessibility of security measures, such as combination numbers, passwords or electronic or biometric security systems, to persons other than specifically authorized personnel;
11. Ensure that the outside perimeter of the Marijuana Establishment is sufficiently lit to facilitate surveillance, where applicable;
12. Ensure that all marijuana products are kept out of plain sight and are not visible from a public place without the use of binoculars, optical aids or aircraft;
13. Develop emergency policies and procedures for securing all product following any instance of diversion, theft or loss of marijuana, and conduct an assessment to determine whether additional safeguards are necessary;

14. Develop sufficient additional safeguards, as required by the Commission, for Marijuana Establishments that present special security concerns;
15. Establish procedures for safe cash handling and cash transportation to financial institutions to prevent theft, loss and associated risks to the safety of employees, customers and the general public;
16. Share the Flower & Soul's security plan, floor plan or layout of the facility and procedures with local law enforcement authorities including police and fire departments, and updating law enforcement authorities including police and fire departments if the plans or procedures are modified in a material way, including the addition of plans to delivery directly to consumers in the case of receipt of a delivery endorsement;
17. Identifying when the use of flammable or combustible solvents, chemicals or other materials are in use at the Marijuana Establishment and sharing such information with law enforcement authorities including police and fire departments in the municipality where the facility is located, as required by the municipality; and
18. Require all employees of the Marijuana Establishment to visibly display an employee identification badge issued by the Marijuana Establishment at all times while at the Marijuana Establishment or transporting marijuana.

The Flower & Soul shall establish limited access areas pursuant to 935 CMR 500.110(4), which shall be accessible only to specifically authorized personnel limited to include only the minimum number of employees essential for efficient operation. Said limited access areas will be identified by the posting of a sign that shall be a minimum of 12" x 12" and which states: "*Do Not Enter—Limited Access Area—Access Limited to Authorized Personnel Only*" in lettering no smaller than one inch in height. All limited access areas shall be clearly described in a diagram of the licensed premises reflecting entrances and exits, including loading areas, walls, partitions, counters, propagation, vegetation, flowering, processing, production, storage, disposal and retail sales areas (as applicable), to be filed with the Commission in a form and manner determined by the Commission.

At all times following receipt of a final license from the Commission, access to limited access areas shall be restricted to employees, agents or volunteers specifically permitted by the Marijuana Establishment, agents of the Commission, Commission delegees, and state and local law enforcement authorities acting within their lawful jurisdictions, police and fire departments, and emergency medical services acting in the course of their official capacity.

Following receipt of a final license from the Commission, all outside vendors, contractors, and visitors shall obtain a visitor identification badge prior to entering a limited access area, and shall be escorted at all times by a marijuana establishment agent authorized to enter the limited access area. The visitor identification badge shall be visibly displayed at all times while the visitor is in any limited access area. All visitors must be logged in and out and that log shall be available for inspection by the Commission at all times. All visitor identification badges shall be returned to the Marijuana Establishment on exit.

The Flower & Soul shall design and implement a security system designed to prevent and detect diversion, theft or loss of marijuana and/or unauthorized intrusion, utilizing commercial grade equipment which shall, at a minimum, include:

1. A perimeter alarm on all building entry and exit points and perimeter windows;
2. A failure notification system that provides an audible, text or visual notification to designated employees within five (5) minutes of any failure in the security system either by telephone, email or text message;
3. A duress alarm, panic alarm or hold-up alarm connected to local public safety or law enforcement authorities;
4. Video cameras in the following areas: (1) all areas that may contain marijuana; (2) vaults or safes used for the purpose of securing cash; and (3) at all points of entry and exit and in any parking lot, and in any case, which shall be appropriate for the normal lighting conditions of the area under surveillance. The cameras shall be directed at all safes, vaults, sales areas and areas where marijuana is cultivated, harvested, processed, prepared, stored, handled or dispensed or where cash is kept and processed. Cameras shall be angled so as to allow for the capture of clear and certain identification of any person entering or exiting the Marijuana Establishment or area;
5. Recordings from all video cameras, which shall be enabled to record twenty-four (24) hours each day and be available for immediate viewing by the Commission on request for at least the preceding ninety (90) calendar days or the duration of a request to preserve the recordings for a specified period of time made by the Commission, whichever is longer. Video cameras may use motion detection sensors to begin recording, so long as the motion detection sensor system provides an alert to designated employees subject to the approval of the Commission or its delegee. If the Flower & Soul receives notice that the motion detection sensor is not working correctly, it shall take prompt action to make corrections and document those actions. Recordings shall not be destroyed or altered, and shall be retained as long as necessary if the Marijuana Establishment is aware of a pending criminal, civil or administrative investigation or legal proceeding for which the recording may contain relevant information;
6. The ability to immediately produce a clear, color still image whether live or recorded;
7. A date and time stamp shall be embedded in all recordings, which shall be synchronized and set correctly at all times and shall not significantly obscure the picture;
8. The ability to remain operational during a power outage for a minimum of four (4) hours and, if it appears likely that the outage will last for more than four (4) hours, the Flower & Soul shall take sufficient steps to ensure security on the premises in consultation with the Commission; and
9. A video recording that allows for the exporting of still images in an industry standard image format, including .jpg, .bmp and .gif. Exported video shall have the ability to be archived in a proprietary format that ensures authentication of the video and guarantees that no alteration of the recorded image has taken place. Exported video shall also have the ability to be saved in an industry standard file

format that may be played on a standard computer operating system. All recordings shall be erased or destroyed prior to disposal.

The Flower & Soul shall have a back-up alarm system, with all the capabilities of the primary system, provided by a Flower & Soul supplying commercial grade equipment, which shall not be the same Flower & Soul supplying the primary security system.

The Flower & Soul shall keep and maintain all security system equipment and recordings in a secure limited access area on site that shall remain locked and shall not be used for any other function, so as to prevent theft, loss, destruction and alterations. Access to said surveillance / security area shall be limited to persons that are essential to surveillance operations, law enforcement authorities, security system service personnel and the Commission. A current list of authorized employees and service personnel that have access to the surveillance room shall be available to the Commission upon request. All security equipment shall be in good working order and shall be inspected and tested at regular intervals, not to exceed 30 calendar days from the previous inspection and test.

The Flower & Soul shall maintain all trees, bushes and other foliage outside of the Marijuana Establishment so as to prevent a person or persons from concealing themselves from sight.

Cash Handling and Transportation Procedures:

- (a) The Flower & Soul shall implement adequate security measures and procedures for safe cash handling and cash transportation to financial institutions or Massachusetts Department of Revenue (the “DOR”) facilities to prevent theft and loss, and to mitigate associated risks to the safety of employees, customers and the general public, including but not limited to:
 - 1. An on-site secure locked safe or vault maintained in an area separate from retail sales areas used exclusively for the purpose of securing cash;
 - 2. Video cameras directed to provide images of areas where cash is kept, handled and packaged for transport to financial institutions or DOR facilities, provided that the cameras may be motion-sensor activated cameras and provided, further, that all cameras be able to produce a clear, still image whether live or recorded;
 - 3. A written process for securing cash and ensuring transfers of deposits to the Marijuana Establishment’s financial institutions and DOR facilities on an incremental basis consistent with the requirements for deposit by the financial institution or DOR facilities, which shall include, at a minimum, the following:
 - a. The use of a locked bag for the transportation of cash from a Marijuana Establishment to a financial institution or DOR facility;
 - b. Any transportation of cash be conducted in an unmarked vehicle;
 - c. Two (2) registered Marijuana Establishment Agents employed by the Licensee shall be present in the vehicle at all times during transportation of deposits;

- d. Real-time GPS tracking of the vehicle shall occur at all times when transporting cash;
- e. Require access to two-way communications between the transportation vehicle and the Marijuana Establishment; and
- f. Prohibit the transportation of Marijuana or Marijuana Products at the same time that cash is being transported for deposit to a financial institution or DOR facility; and
- g. Use of an armored transport provider that is licensed pursuant to M.G.L. c. 147, § 25 (watch, guard or patrol agency) and has been approved by the financial institution or DOR facility.

Alternative Cash Handling and Transportation Procedures (if approved by the Commission and the financial institution or DOR facility) shall be included in this *Security Policy*, shared with law enforcement in the municipality in which the subject facility is licensed, and periodically updated as required under 935 CMR 500.110(1)(q).

The Flower & Soul shall notify appropriate law enforcement authorities and the Commission of any breach of security or other reportable incident defined in 935 CMR 500.110(9) immediately and, in no instance, more than twenty-four (24) hours following discovery of the breach or incident. Notification shall occur, but not be limited to, during the following occasions:

1. Discovery of inventory discrepancies;
2. Diversion, theft or loss of any marijuana product;
3. Any criminal action involving or occurring on or in the Marijuana Establishment premises or involving the Flower & Soul or its marijuana establishment agents;
4. Any suspicious act involving the sale, cultivation, distribution, processing or production of marijuana by any person;
5. Unauthorized destruction of marijuana;
6. Any loss or unauthorized alteration of records related to marijuana;
7. An alarm activation or other event that requires response by public safety personnel, including but not limited to local law enforcement, police and fire departments, public works or municipal sanitation departments, and municipal inspectional services departments, or security personnel privately engaged by the Flower & Soul;
8. The failure of any security alarm system due to a loss of electrical power or mechanical malfunction that is expected to last more than eight (8) hours;
9. A significant motor vehicle crash that occurs while transporting or delivery marijuana or marijuana products and would require the filing of a motor vehicle crash operator report pursuant to M.G.L. c. 90 section 26, provided however that

a motor vehicle crash that renders the Licensee's vehicle inoperable shall be reported immediately to state and local law enforcement so that the marijuana or marijuana product(s) may be adequately secured; or

10. Any other breach of security.

The Flower & Soul shall, within ten (10) calendar days, provide notice to the Commission of any incident described in 935 CMR 500.110(7)(a) by submitting an incident report in the form and manner determined by the Commission which details the circumstances of the event, any corrective action taken, and confirmation that the appropriate law enforcement authorities were notified.

All documentation related to an incident that is reportable pursuant to 935 CMR 500.110(9)(a) shall be maintained by the Flower & Soul for not less than one year or the duration of an open investigation, whichever is longer, and made available to the Commission and law enforcement authorities upon request.

The Flower & Soul shall, on an annual basis, obtain at its own expense, a security system audit by a vendor approved by the Commission. A report of such audit shall be submitted, in a form and manner determined by the Commission, no later than 30 calendar days after the audit is conducted. If the audit identifies concerns related to the Marijuana Establishment's security system, the Flower & Soul will submit a plan to mitigate those concerns within ten (10) business days of submitting the audit.

Notwithstanding anything contained herein to the contrary, if the Flower & Soul implements other specific safeguards that may be regarded as an adequate substitute for the requirements set forth in 935 CMR 500.110(1), (5), (6) and (7), it will submit a request to the Commission for review and approval, in a form and manner as determined by the Commission. Any additional or other specific safeguards will also be submitted to the local law enforcement authorities and fire services for review and comment. For purposes of cash handling and cash transportation, only alternative safeguards that comply with the requirements of 935 CMR 500.110(7)(b) shall be considered to be adequate substitutes.

Access to the Commission, Emergency Responders and Law Enforcement.

1. The following individuals shall have access to a Marijuana Establishment or Marijuana Establishment transportation vehicle:
 - a. Representatives of the Commission in the course of responsibilities authorized by St. 2016, c. 334, as amended by St. 2017, c. 55, M.G.L. c. 94G, and 935 CMR 500.000: *Adult Use of Marijuana*;
 - b. Representatives of other state agencies of the Commonwealth; and
 - c. Emergency responders in the course of responding to an emergency.

Hours of Operation: The Flower & Soul shall provide all hours of operation and after-hours contact information to the Commission, shall make the same information available to all law enforcement authorities upon request, and shall update it as required under 935 CMR 500.000: *Adult Use of Marijuana*.

The Company will operate within the Bylaw of 8am to 8pm and shall operate the Establishment from the hours of 9am through 8pm, Monday through Sunday, excluding legal holidays.