



SUBMITTAL REVIEW

H&A JN: 1614.03
 Project: MSBA Accelerated Repair Program
 Halifax Elementary School – Windows, Doors & Siding Replacement
 464 Plymouth Street
 Halifax, MA 02338

SUBMITTAL
 Overhead Door Shop Drawings

ITEMS:
 1. Overhead Door 111 Shop Drawings


COMMENTS:

1. Field Verify door opening dimensions and clearances for track.


HABEEB & ASSOCIATES ARCHITECTS INC. 150 LONGWATER DRIVE NORWELL, MA 02061	
NO EXCEPTIONS TAKEN	
NOTE MARKINGS RESUBMITTAL NOT REQ'D	X
NOTE MARKINGS RESUBMITTAL REQ'D	
REJECTED	
This review is given for design concept only and does not relieve the contractor from meeting the provisions of the contract, drawings and specifications. The Contractor is responsible for verifying all dimensions, schedules, quantities and field conditions.	
DATE 04-05-18	BY SB

To: Habibeb & Associates Architects
150 Longwater Drive
Norwell, MA 02061

Contractor: Lambrian Construction Corporation
384 Washington Street
Westwood, MA 02090
Tel: (781) 461-1100 Fax: (781) 461-9885

Submittal No:	16
Date Submitted:	3/23/2018
Manufacturer:	Overhead Door Co.
Product Name:	Overhead Door
Specification Section:	per drawing A-502 -Door Schedule (door 111)
Approved By:	
Description:	Shop Drawings

COMMENTS:

PROJECT: Halifax Elementary School
LAMBRIAN CONSTRUCTION CORP.
Approved by: 

WINDOWS, DOORS & SIDING REPLACEMENT
HALIFAX ELEMENTARY SCHOOL
464 PLYMOUTH STREET
HALIFAX, MASSACHUSETTS 02338

STANDARD SPECIFICATIONS

WORK INCLUDED
The doors will be Series 418 as manufactured by Overhead Door Corporation.

RELATED WORK
Opening preparation, miscellaneous or structural metal work, access panels, finish or field painting, field electrical wiring, wire, conduit, fuses and disconnect switches are in the Scope of Work of other divisions or trades.

SECTIONS
Sections will be 16 ga. roll-formed galvanized and will have a nominal thickness of 2". Doors will have rabbeted meeting rails to form weathertight joints and provide full-width interlocking structural rigidity. Center and end stiles will be 16 ga. steel, formed and fastened as integral structures with the rolled sections. End stiles will be channel-shaped to 2" deep. Back cover will be 26 ga. steel. Deflection of door in the horizontal position will not exceed 1/120 of the door width.

TRACK
Track is 3" and angle mounted.

INSULATION
Insulation will be composed of polystyrene providing insulation factors of 7.35 R-Value.

HARDWARE
Hinges and fixtures will be galvanized steel. Full-floating ball-bearing rollers will have hardened steel races. Roller sizes will be adequate for design requirements and limitations.

WEATHERSTRIP
Bottom weatherstrip will be flexible PVC and held in place by a retainer which also provides additional reinforcement.

FINISH
Paint will be baked-on polyester or epoxy coating.

OPERATION
Operation will be **MANUAL**

INSTALLATION
Install the doors in accordance with Overhead Door Corporation instructions and standards, using an authorized Overhead Door Corporation distributor.

MODEL 418 STEEL INSULATED DOORS

PROJECT Halifax Elementary Schoolhali

ARCHITECT Habeeb & Associates

CONTRACTOR Lambrian Construction

DISTRIBUTOR OHDC of Southeastern MA

PLANT PENNSYLVANIA

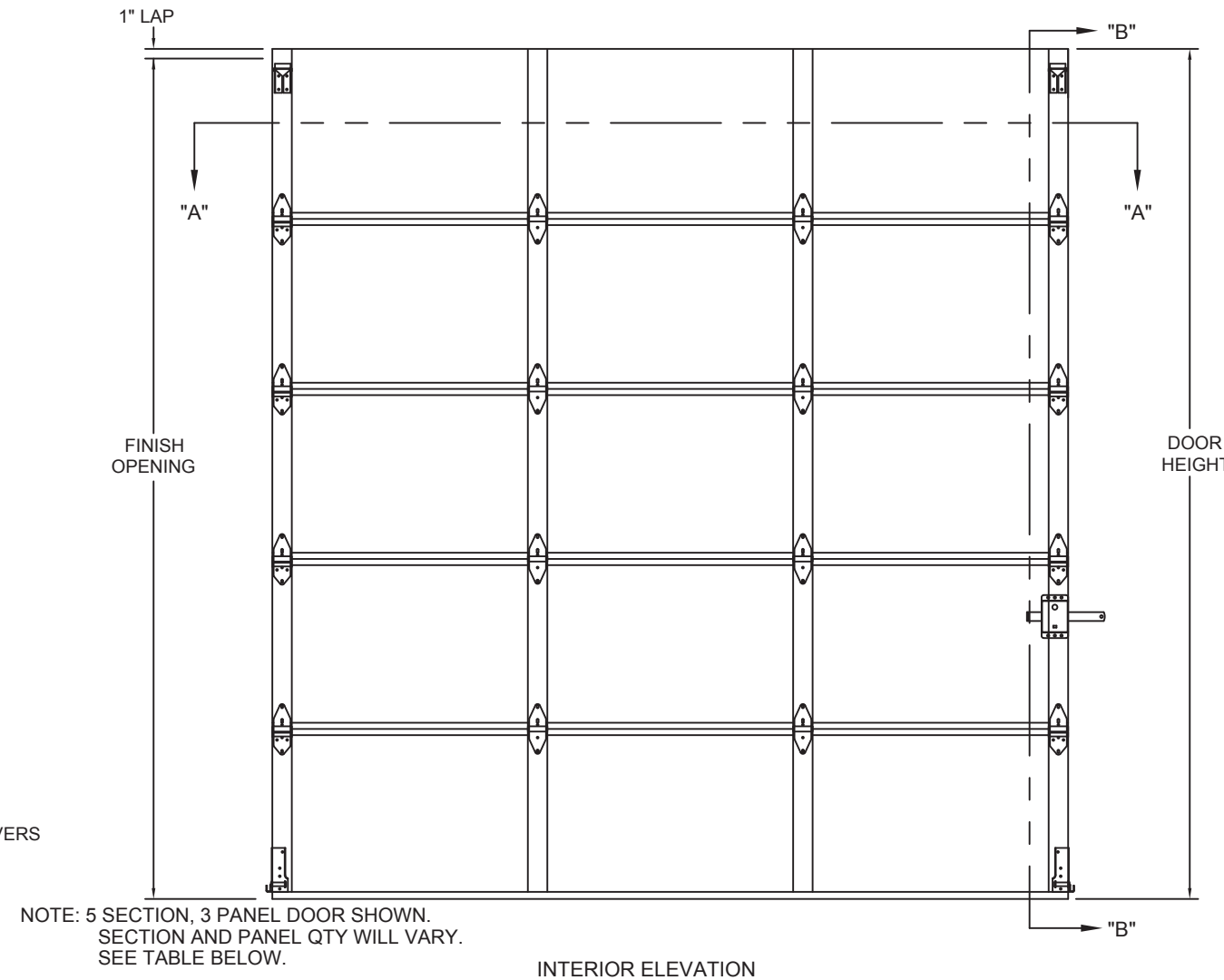
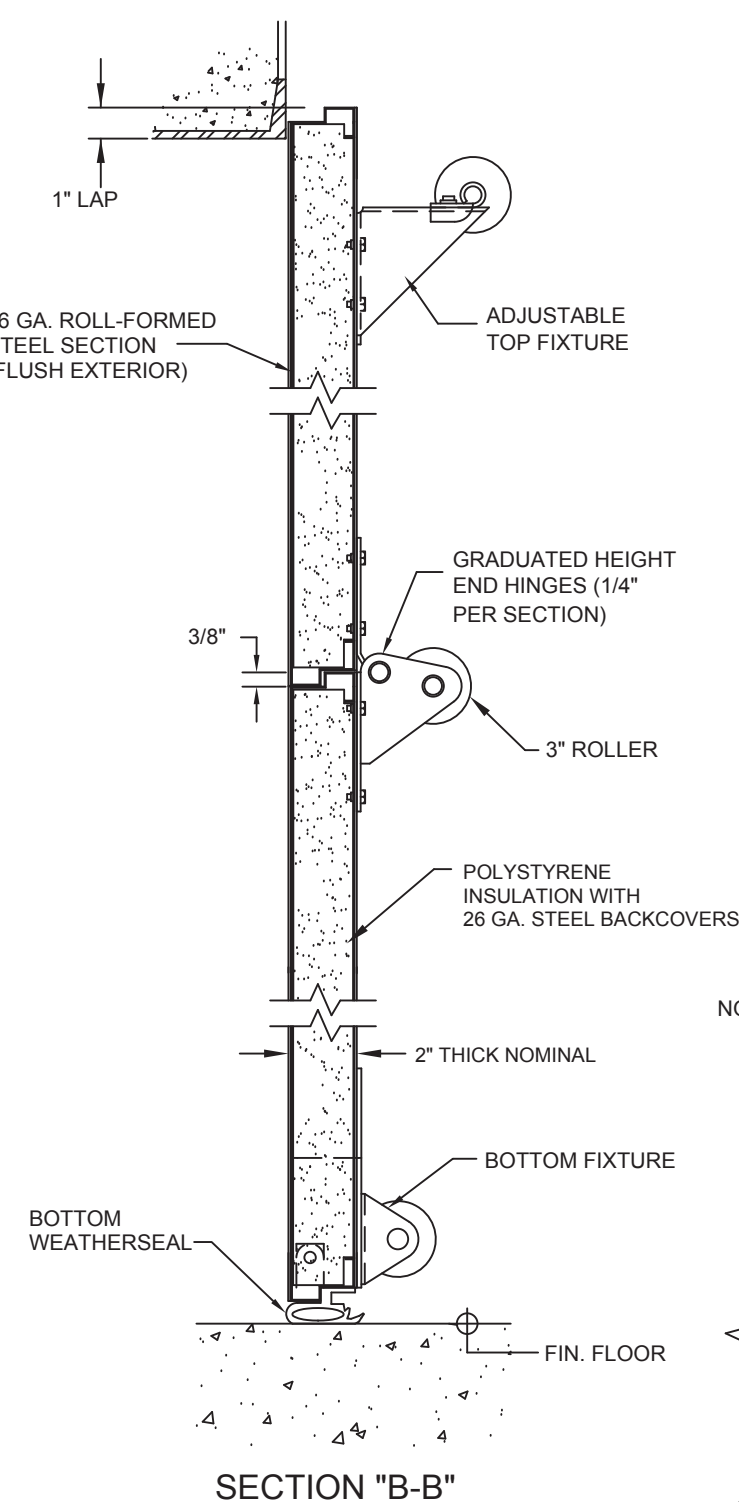
DWG. NO.

DATE:
3/23/18

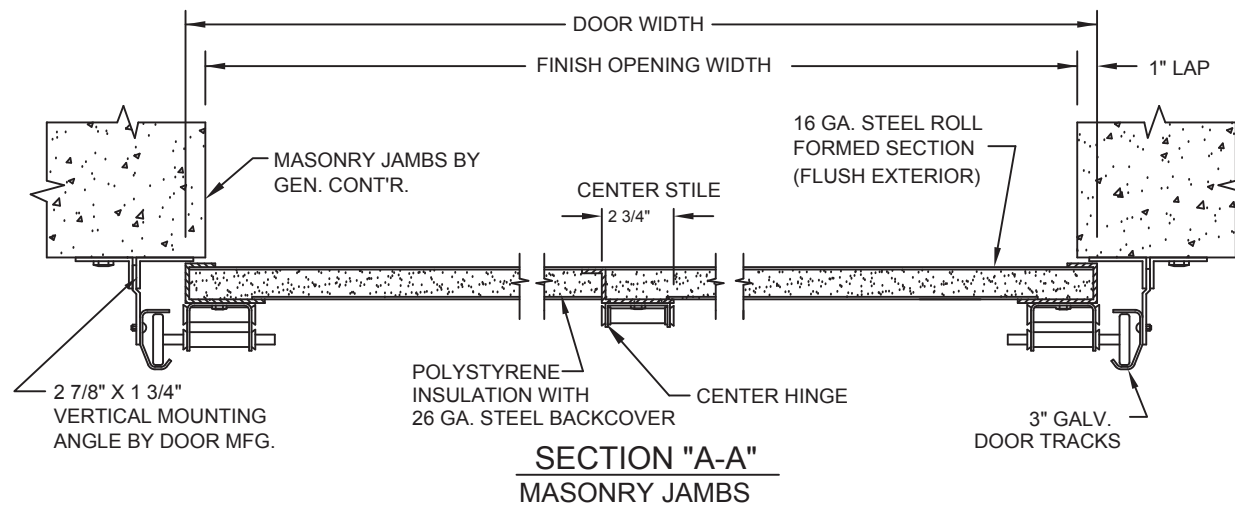
The Genuine. The Original.

SHEET
1 of 2

BY:
CIS



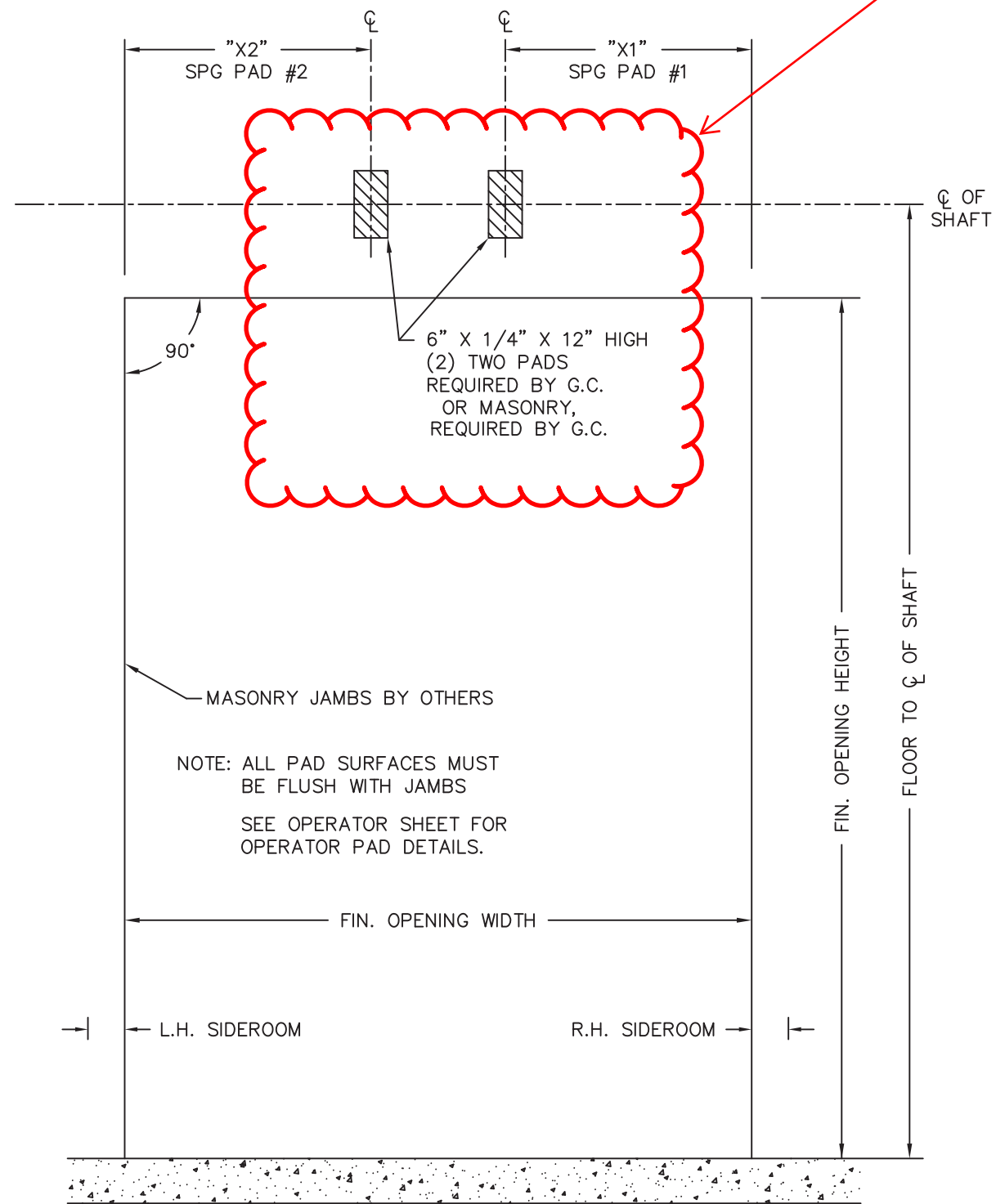
NOTE: 5 SECTION, 3 PANEL DOOR SHOWN. SECTION AND PANEL QTY WILL VARY. SEE TABLE BELOW.



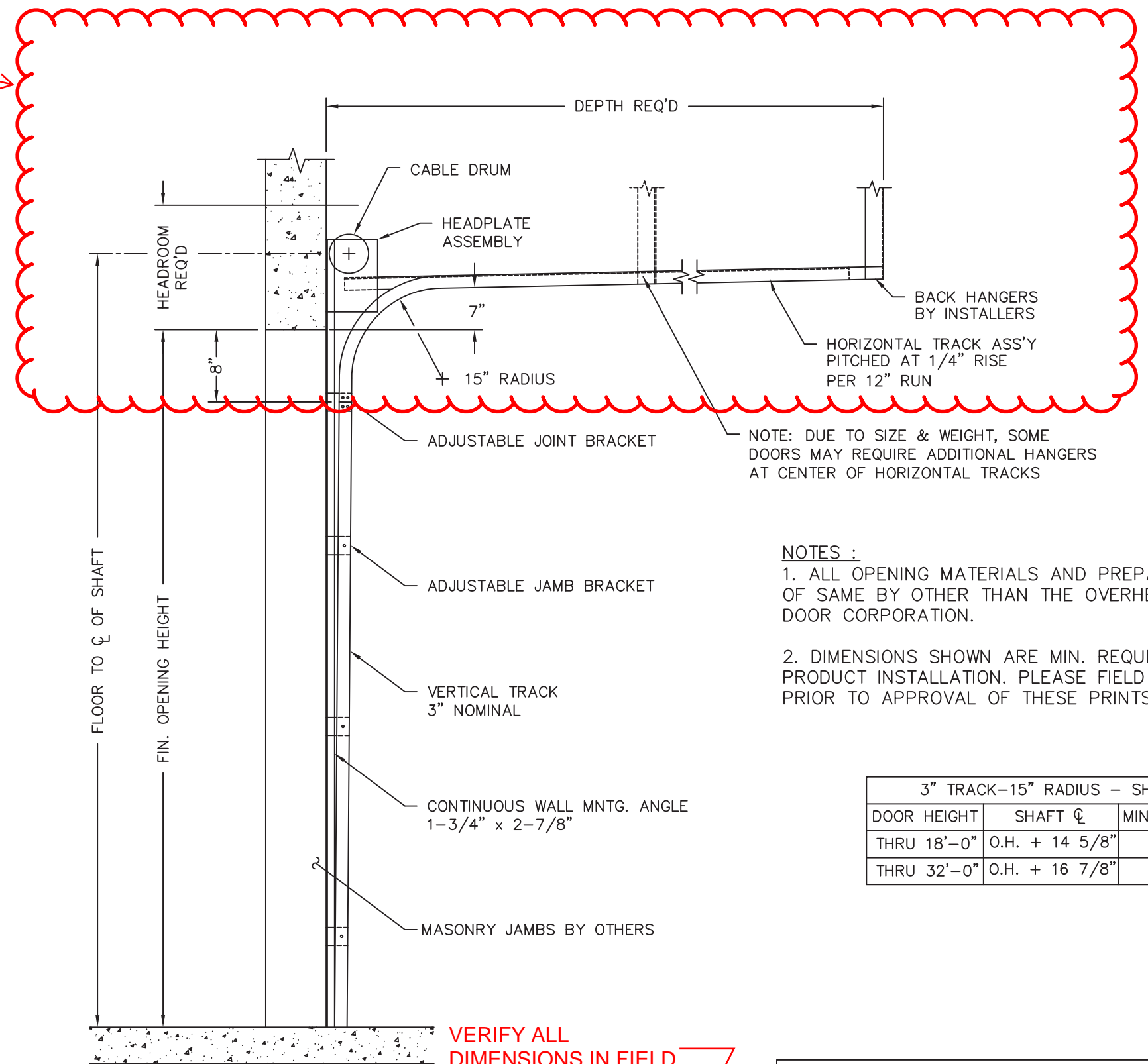
7'-6" VERIFY IN FIELD

ARCHITECT DOOR NUMBER	OVERHEAD DOOR MARK	QTY	OPENING SIZE		DOOR SIZE		TRACK TYPE	LIFT TYPE	WEATHERSTRIP			SECTIONS HIGH	LITE/PANEL QTY	EXTERIOR COLOR	NOTES :
			WIDTH	HEIGHT	WIDTH	HEIGHT			JAMB	HEAD	BOT SEAL				
-	-	1	7'-2"	8'-0"	7'-4"	8'-1"	3"	Standard lift			✓	5	-	white	

VERIFY ALL CLEARANCES IN FIELD



INTERIOR ELEVATION



SIDE VIEW OF MOUNTED TRACK

VERIFY ALL DIMENSIONS IN FIELD

NOTES :

1. ALL OPENING MATERIALS AND PREPARATION OF SAME BY OTHER THAN THE OVERHEAD DOOR CORPORATION.
2. DIMENSIONS SHOWN ARE MIN. REQUIRED FOR PRODUCT INSTALLATION. PLEASE FIELD VERIFY PRIOR TO APPROVAL OF THESE PRINTS.

3" TRACK-15" RADIUS - SHAFT CL		
DOOR HEIGHT	SHAFT CL	MIN HEADROOM
THRU 18'-0"	O.H. + 14 5/8"	18"
THRU 32'-0"	O.H. + 16 7/8"	21 1/2"

STANDARD LIFT TRACK		
PROJECT	Halifax Elementary	
ARCHITECT	Habeb & Associates	
CONTRACTOR	Lambrian Construction	
DISTRIBUTOR	OHDC of Southeastern MA	
PLANT	Pennsylvania	
DISTRIBUTOR DWG. NO.	DATE:	The Genuine. The Original. OVERHEAD DOOR
SHEET	3/23	
2 of 2		CIS

ARCHITECT DOOR NUMBER	OVERHEAD DOOR MARK	QTY	OPENING SIZE		TRACK TYPE	TRACK PITCH	LIFT CLEARANCE	SHAFT CENTERLINE	"X1" SPRING PAD #1	"X2" SPRING PAD #2	HEADROOM REQUIRED	DEPTH REQUIRED (OPEN HT+1'-6")	LEFT HAND SIDEROOM	RIGHT HAND SIDEROOM
			WIDTH	HEIGHT										
-	-	1	7'-2"	8'-0"	3"	(STD) 1/4:12	7"	110 5/8"	40"	40"	18"	126"	7"	7"
					3"	(STD) 1/4:12	7"						7"	7"
					3"	(STD) 1/4:12	7"						7"	7"
					3"	(STD) 1/4:12	7"						7"	7"

7'-6" VERIFY IN FIELD