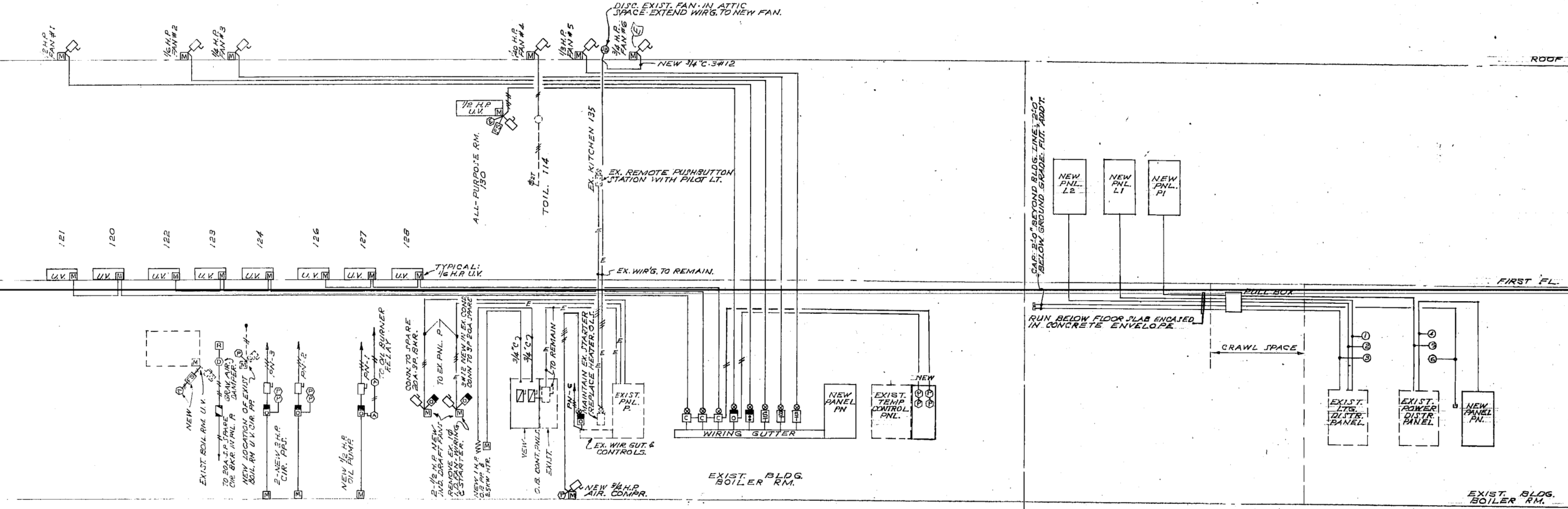


LOW TENSION RISER DIAGRAMS



LIGHTING & POWER PANELBOARD SCHEDULE

PANEL NO.	TOTAL BRKS	POLES	CIRCUIT BREAKERS			TYPE TRIM	FEED SIZE
			20A JYP	30A 3P	30A 3P		
L1	42	42	42			FLUSH 2"	4"
L2	40	40	40			FLUSH 3"	4"
PN	22	42	12	10		FLUSH 1 1/2"	4"
PN1	14	22	9	2	1	SURFACE 1 1/2"	4"
PDN	24	32	24				

LOW TENSION TERMINAL STRIP CABINET W/3/4" SOFT WOOD BACKBOARD AND TRIMS TO MATCH LTR & PWR. RHLBDS.

CIRCUIT SCHEDULE

BRANCH CIRCUIT				EQUIPMENT	LOCATIONS	FEEDERS	
NO.	BREAKERS	COND.	WIRE			COND.	WIRE
PANEL PN							
1	3	20	1/2	OIL PUMP	EXIST. BOILER RM.	3/4"	3/12
2	3	20	2	CIR. PUMP	EXIST. BOILER RM.		3/12
3	3	20	2	CIR. PUMP	EXIST. BOILER RM.		3/12
4	3	20	1/2	UNIT VENT	MULTI. PURR. 130	3/4"	3/12
5	3	20	1/2	FAN #1	ROOF	3/4"	3/12
6	3	20	3/4	AIR COMPR.	EXIST. BOILER RM.	3/4"	3/12
7	3	20		FUT. FRZ. COMPR.	EXIST. BOILER RM.	1"	4/12
8	3	20		FUT. REF. COMPR.	EXIST. BOILER RM.	1"	4/12
9	3	20		SPARE			
10	3	20		SPARE			
11	1	20	1/3	FAN #5	ROOF	3/4"	3/12
12	1	20	1/4	FAN #3	ROOF		3/12
13	1	20	1/6	FAN #2	ROOF		3/12
14	1	20	1/6	UNIT VENTS	CLAMS - 129, 127, 126		3/12
15	1	20	1/6	UNIT VENTS	CLAMS - 124, 123, 122		3/12
16	1	20	1/6	UNIT VENTS	CLAMS - 120, 121	3/4"	3/12
17	1	20		SPARE			
18	1	20					
19	1	20					
20	1	20					
21	1	20					
22	1	20		SPARE			

NOTES:

- MINIMUM SIZE CONDUIT SHALL BE 3/4" I.D. EXCEPT AS NOTED.
- PULL BOX #1 SHALL BE 6" X 30" X 4" D. FLUSH WALL MTD. WITH BARRIERS TO SEPARATE SYSTEMS AND REMOVABLE SCREW COVER.
- SIZE AND NUMBER OF WIRING GUTTERS SHALL BE IN ACCORDANCE WITH NATIONAL ELECTRIC CODE AND SHALL MEET JOB SITE SPACE LIMITATIONS.

NUMBERED WORK SCHEDULE:

- REPLACE EXISTING 30A-3P CIR. BKR. WITH A NEW 100A-3P CIR. BKR. IN EXIST. DISTR. PNL. DL. CONNECT 3" C. 4#10 TO NEW BKR. (DIRECTORY TO READ "PANEL L1 - EAST").
- 2" C. 4#8 CONNECT TO EXIST. 125A-3P SPARE CIR. BKR. IN EXIST. DISTR. PNL. DL. (DIRECTORY TO READ "PANEL L2").
- 2" C. EMPTY #14 B PULL WIRE - TERMINATE IN EXIST. DISTR. PNL. DL.
- 1 1/2" C. 4#4 CONNECT TO EXIST. 70A-3P SPARE CIR. BKR. IN EXIST. DISTR. PNL. DL. (DIRECTORY TO READ "PANEL PN").
- 1 1/2" C. 4#4 CONNECT TO EXIST. 70A-3P SPARE CIR. BKR. IN EXIST. DISTR. PNL. DL. (DIRECTORY TO READ "PANEL PN").
- 1 1/2" C. EMPTY #14 B PULL WIRE - TERMINATE IN A BUSHING AT NEW MOTOR CONTROL WIRING GUTTER. (FUT. ADDITION - MOTORS).

ELECTRICAL

KILHAM, HOPKINS, GREELEY & ARCHITECTS

9 ARLINGTON STREET
BOSTON, MASS.

JOHN I. HUNNAGLE, JR.
REGISTERED PROFESSIONAL ENGINEER

McCarron & Hunnagle, Associates, Inc.
Electrical Engineers

FILE NO. 2524
SCALE NONE
DATE 7/27/64

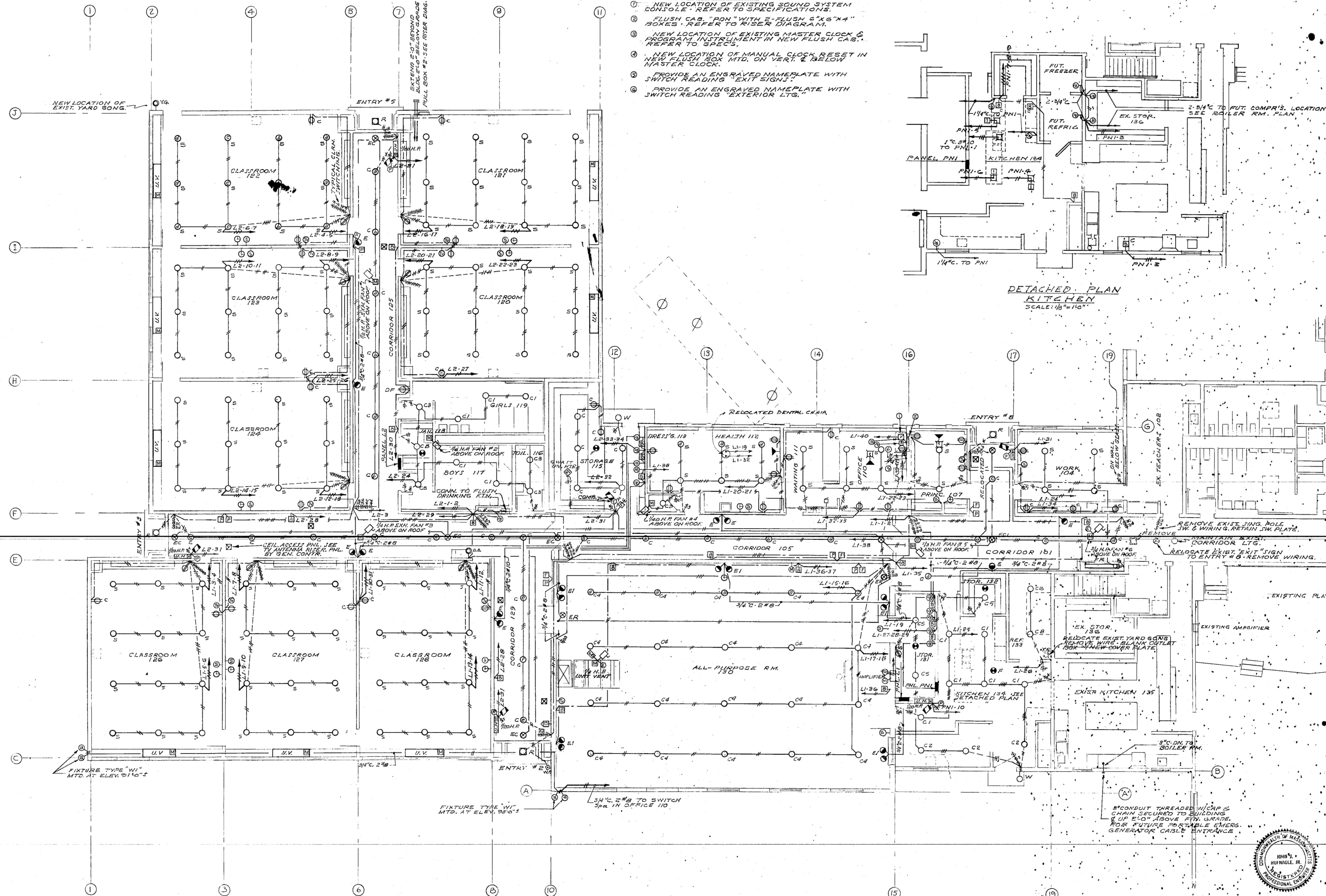
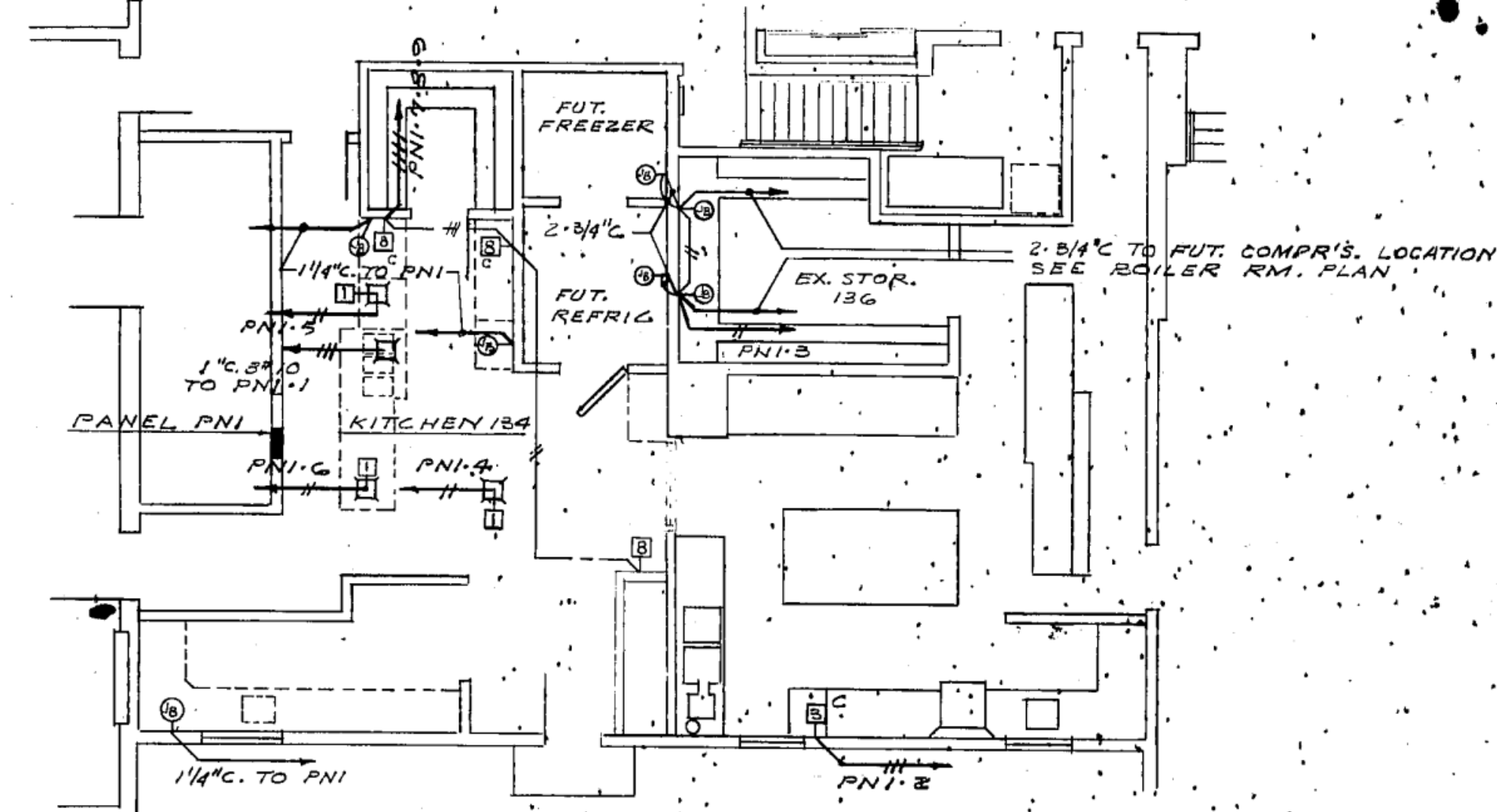
ADDITION TO TITLE
HALL
TITARY SCHOOL
OF DRAWING
PER DIAGRAM

EQUIPMENT LEGEND:

1. NEW LOCATION OF EXISTING SOUND SYSTEM CONSOLE. REFER TO SPECIFICATIONS.
2. FLUSH CAB. "PON" WITH 2-FLUSH 6"x6"x4" BOXES. REFER TO RISER DIAGRAM.
3. NEW LOCATION OF EXISTING MASTER CLOCK & PROGRAM INSTRUMENT IN NEW FLUSH CAB. REFER TO SPEC.
4. NEW LOCATION OF MANUAL CLOCK RESET IN NEW FLUSH BOX MTD. ON VERT. & BELOW MASTER CLOCK.
5. PROVIDE AN ENGRAVED NAMEPLATE WITH SWITCH READING "EXT. SIGNL."
6. PROVIDE AN ENGRAVED NAMEPLATE WITH SWITCH READING "EXTERIOR LTS."

CIRCUIT SCHEDULE

BRANCH NO.	CIRCUIT	BREAKER'S CONDUIT	EQUIPMENT	LOCATIONS	FEED COND.
PANEL PNI					
1.	3	30	FUT. HOT FOODS	KITCHEN 134	1"
2.	3	20	FUT. MIXER	EX. KITCHEN 135	1"
3.	1	20	FUT. EVAPORATOR	KITCHEN 134	1"
4.	1	20	FUT. ICE CREAM CAS.		1"
5.	1	20	FUT. MILK LOWERING		1"
6.	1	20	FUT. SERVING TABLE		1"
7.	1	20	20A RECEPT.		1"
8.	1	20	20A RECEPT.		1"
9.	1	20	20A RECEPT.		1"
10.	1	20	UNIT HEATER	KITCHEN 134	1"
11.	1	20	SPARE		1"
12.	1	30	SPARE		1"
13.	3	20	SPARE		1"
14.	3	30	SPARE		1"



ELECTRICAL

KILHAM, HOPKINS, GREELEY & BRADSHAW, INC. ARCHITECTS

9 ARLINGTON STREET BOSTON, MASS.

FILE NO. 2524

SCALE 1/8"=1'-0"

DATE 7/27/64

TRACED BY W.F.S.

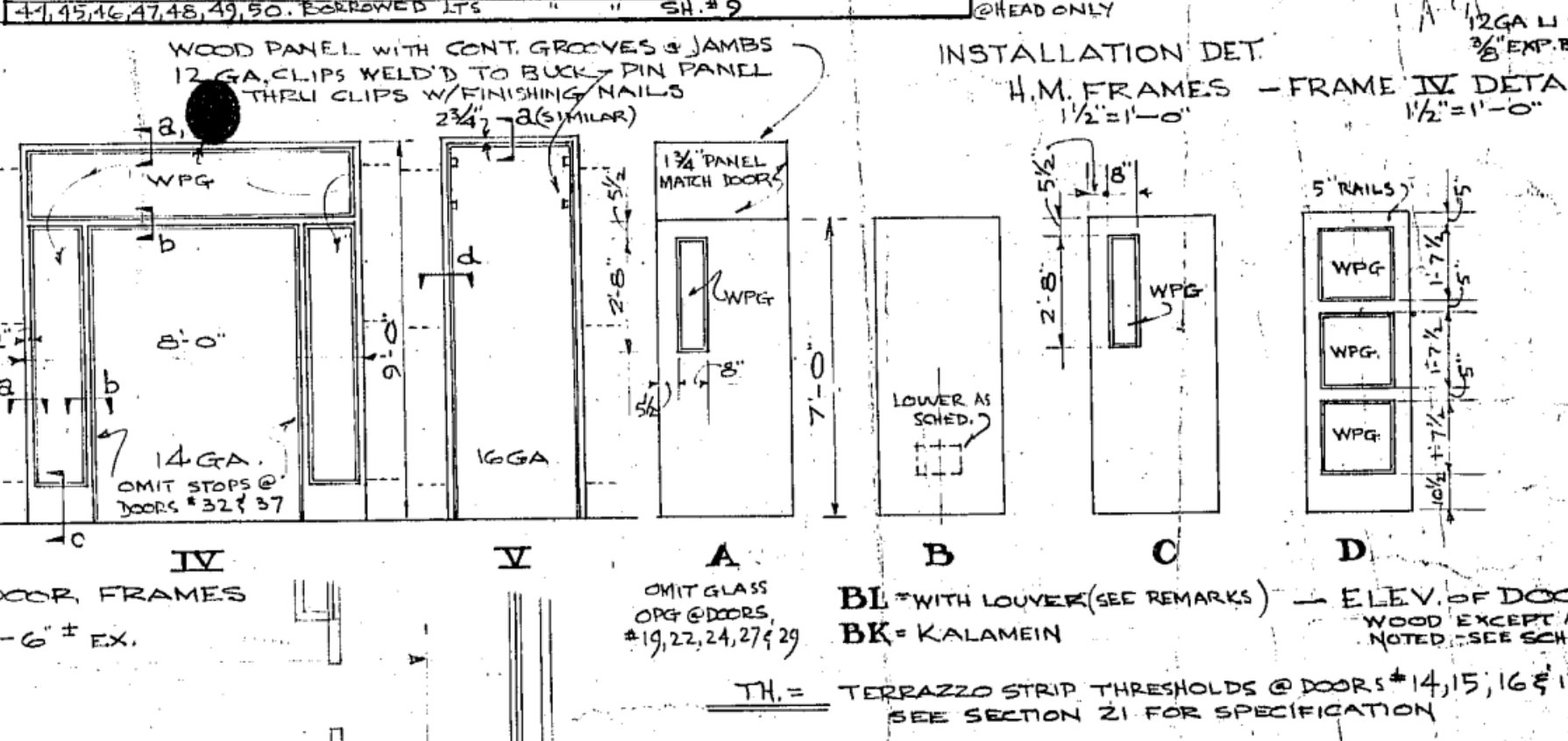
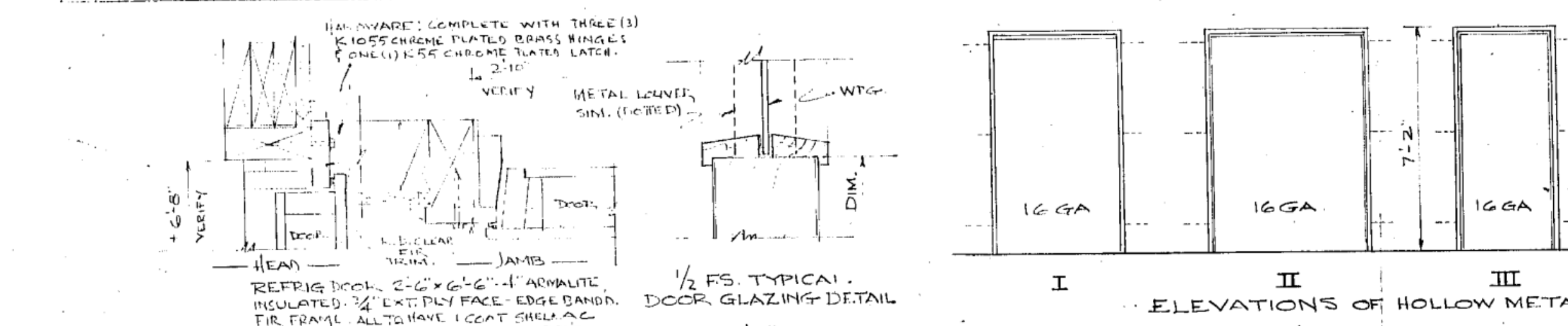


McCARRON & HUFNAGLE, ASSOCIATES, INC. Electrical Engineers



SPACE		FINISH		SCHEDULE		WINDOWS		REMARKS	
NAME	NUMBER	FLOOR	BASE	WALLS	SURFACE	CEILING	REVEAL	STOOL	
EX. ENTR. CORR.	100	EX.	EX. CT.	EX. CT.	EX. CT.	9'-0" EX. ACT.			FL. CLG. & DROPPED AREA
CORRIDOR	101	EX. ACT.	CT.	EX. CT.	EX. CT.	9'-0" EX. ACT.			EAST WALL PD.
EX. TEACHERS	102	EX. ACT.	EX. RT.	EX. RT.	EX. RT.	9'-0" EX. ACT.			WD. SHELF & POLE 1/4" ID ST. POLE
CLOSET	103	ACT.	RT.		PLY.	7'-6" PLY.			
WORK	104	ACT.	RT.		PLY.	9'-0" ACT.			
CORRIDOR	105	ACT.	CT.		PLY.	9'-0" ACT.			WD. SHELF & POLE
CLOSET	106	ACT.	CT.		PLY.	7'-6" PLY.			
PRINCIPAL	107	ACT.	WD.	PLY.	PLY.	9'-0" ACT.			WD. SHELF & POLE
CLOSET	108	ACT.	RT.		PLY.	7'-6" PLY.			
STORAGE	109	ACT.	RT.		PLY.	7'-6" PLY.			G. WD. SHELVES
OFFICE	110	ACT.	RT.		PLY.	9'-0" ACT.			
WAITING	111	ACT.	RT.		PLY.	9'-0" ACT.			
HEALTH	112	ACT.	RT.		PLY.	9'-0" ACT.			
DRESSING	113	ACT.	RT.		PLY.	9'-0" ACT.			
TOILET	114	ACT.	RT.		PLY.	7'-6" PLY.			
STORAGE	115	ACT.	RT.		PLY.	7'-6" PLY.			
BOYS TOILET	116	ACT.	WT.		WT.	9'-0" ACT.			
BOYS TOILET	117	ACT.	WT.		WT.	9'-0" ACT.			
CUSTODIAN	118	ACT.	WT.		WT.	9'-0" ACT.			
GIRLS TOILET	119	ACT.	WT.		WT.	9'-0" ACT.			
CLASSROOM	120, 123, 124	ACT.	RT.		PLY.	9'-0" ACT.			
CORRIDOR	125	ACT.	CT.		PLY.	9'-0" ACT.			
CLASSROOM	126, 127, 128	ACT.	CT.		PLY.	9'-0" ACT.			
CORRIDOR	129	ACT.	CT.		PLY.	9'-0" ACT.			
ALL PURPOSE	130	ACT.	WD.	PLY. ST.	PLY. ST.	9'-0" ACT.			
STORAGE	131	ACT.	RT.		PLY.	9'-0" PLY.			
STORAGE	132	ACT.	RT.		PLY.	9'-0" PLY.			
FUTURE REFRIG.	133	ACT.	CT.		PLY.	9'-0" PLY.			
KITCHEN	134	ACT.	CT.		PLY.	9'-0" PLY.			
EX. KITCHEN	135	ACT.	CT.		PLY.	9'-0" PLY.			
EX. STORAGE	136	ACT.	CT.		PLY.	9'-0" PLY.			
EX. STORAGE	137	ACT.	CT.		PLY.	9'-0" PLY.			

DOOR		SCHEDULE		REMARKS	
DOOR NO.	TYPE	SIZE	FRAME	INSTALL	
1, 5	PR. B.	4'-3" x 7'-0"	I	5/4"	
2	D	2'-10" x 7'-0"	III	5/4"	
3, 4, 11, 39	B	2'-10" x 7'-0"	III	5/4"	
6	B	2'-10" x 7'-0"	III	5/4"	
7	B	1'-6" x 7'-0"	III	4/4"	
8	B	2'-0" x 7'-0"	III	4/4"	
9	D	2'-10" x 7'-0"	III	5/4"	
10	B	2'-10" x 7'-0"	III	5/4"	
12	B	2'-10" x 7'-0"	III	5/4"	
13	B	3'-0" x 7'-0"	III	5/4"	
14, 15, 17	BL	2'-10" x 7'-0"	III	5/4"	
16	BL	2'-10" x 7'-0"	III	5/4"	
18, 20, 21, 23, 25	A	3'-0" x 7'-0"	III	5/4"	
26, 28, 30	A	3'-0" x 7'-0"	III	5/4"	
19, 22, 24, 27, 29	A	3'-0" x 7'-0"	III	5/4"	
31	PR. D	5'-0" x 7'-0"	IV	4/4"	
32, 37	PR. D	5'-0" x 7'-0"	IV	4/4"	
33	PR. D	5'-0" x 7'-0"	IV	4/4"	
34, 36	PR. D	5'-0" x 7'-0"	IV	4/4"	
35	PR. D	5'-0" x 7'-0"	IV	4/4"	
36	B	3'-0" x 7'-0"	III	5/4"	
40	REFRIGERATOR DOOR & FRAME - SEE DET. THIS SHEET				
41	BL	2'-10" x 7'-0"	III	7/4"	
42, 43	SEE DET. THIS SHEET				
44, 45, 46, 47, 48, 49, 50	SEE DET. THIS SHEET				



1/2 FS. TYPICAL DOOR GLAZING DETAIL
93 1/2"

WOOD PANEL WITH CONT. GROOVES & JAMBS
12 GA. CLIPS WELD'D TO BACK - PIN PANEL
THRU CLIPS W/ FINISHING NAILS
2 1/2" x 3/8" (MIN.)

OMIT GLASS ORG. SDOORS 19, 22, 24, 27, 29
BK = KALAMEN

TH = TERRAZZO STRIP THRESHOLDS @ DOOR # 14, 15, 16 & 17
SEE SECTION 21 FOR SPECIFICATION

EX. ACT. TO BE REMOVED & REPLACED FOR ELEC. CONTR. TO FISH WIRES ETC. FROM EX. TRINC. AREA CLOCK & CONSOLE SOUND SYSTEMS

EX. ENTR. & CORRIDOR 100

EX. STAIR

EX. PLATFORM & ALL PURPOSE RM.

EX. MEN

EX. HEALTH

EX. T

EX. CORRIDOR

EX. WAITG.

EX. BOYS

EX. WOMEN

EX. TEACHERS 102

EX. STORAGE

EX. PRINC. EX. CORRESP. RELOCATED RM. 110

EX. DENTAL CLINIC RELOCATED IN RM. 112 BY G.C.

PATCH FL TO MATCH

NOTE: FLOOR ELEV. 80'-0" EXCEPT AS NOTED

APPLY LOCATION OF EX. TESTING TANK
SEE SHEET FOR NEW WORK

REFRIG. DOOR 2'-0" x 6'-0" - 1" ALUMINUM INSULATED 1/4" EXT. PLY. FACE - EDGE BANDING FOR FRAME. ALL GLASS LOCATED SHOWN AS LOCATED - PANEL VARNISH - DET. SHEET 39 (NO SCALE)

VERIFY METAL LOWER SIM. (1000)

VERIFY

VERIFY

VERIFY

VERIFY

VERIFY

VERIFY

VERIFY

VERIFY

VERIFY

VERIFY

VERIFY

VERIFY

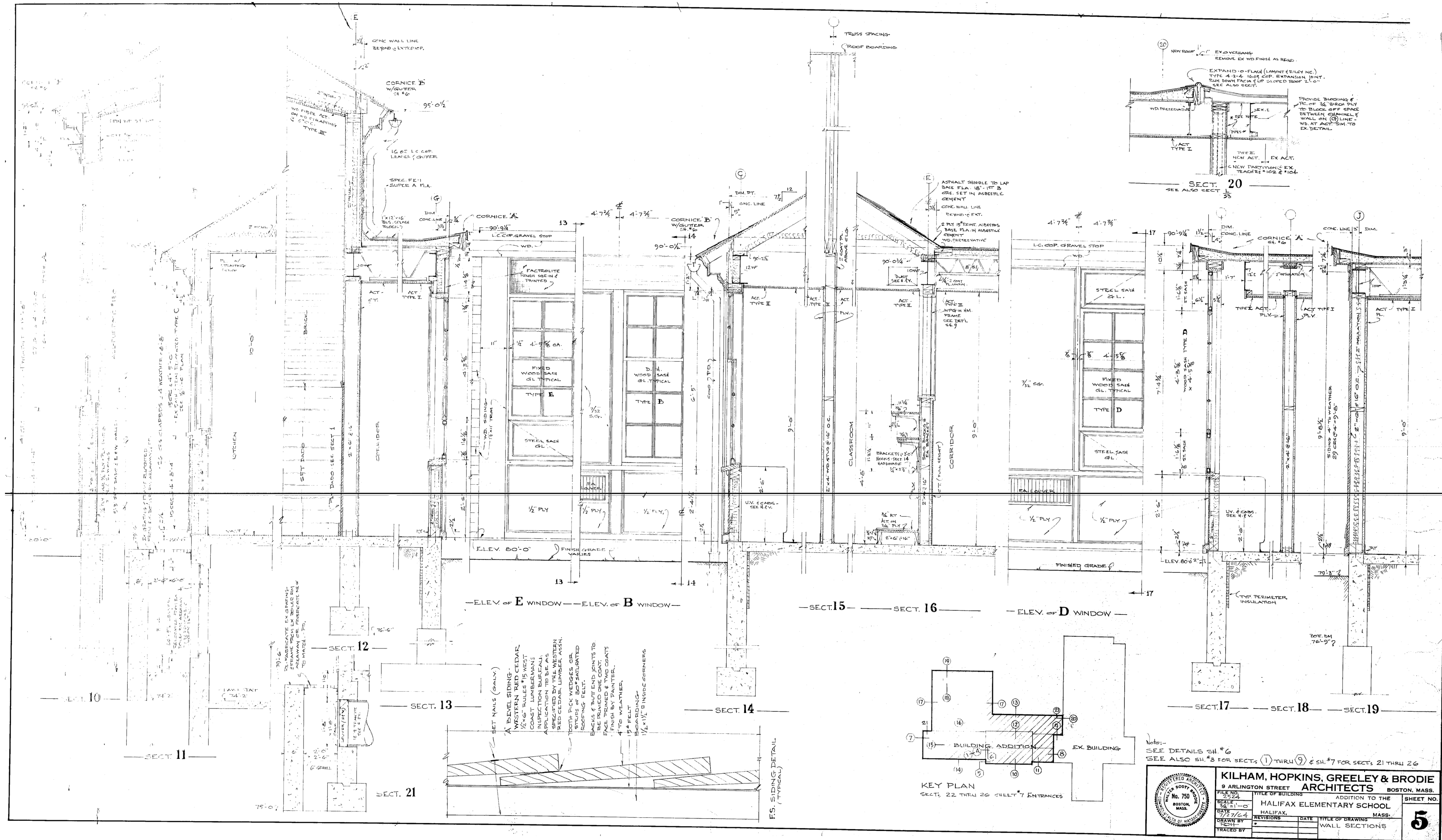
VERIFY

VERIFY

VERIFY

VERIFY

VERIFY



Notes:
SEE DETAILS SH. #6
SEE ALSO SH. #3 FOR SECTS. 1 THRU 9 & SH. #7 FOR SECTS. 21 THRU 26

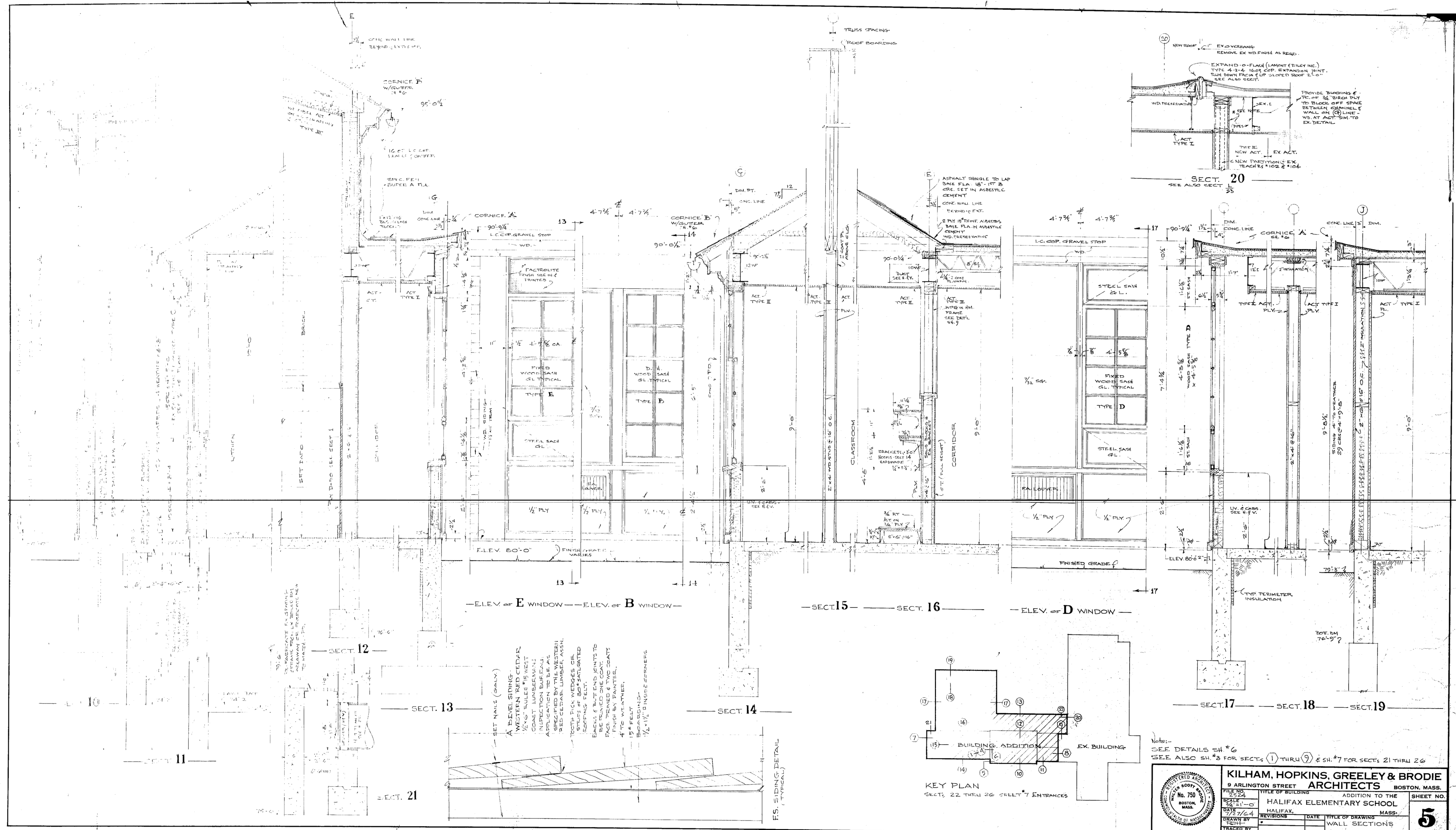
KILHAM, HOPKINS, GREELEY & BRODIE
9 ARLINGTON STREET
BOSTON, MASS.
ARCHITECTS

ADDITION TO THE
HALIFAX ELEMENTARY SCHOOL
HALIFAX, MASS.

FILE NO. 750
SCALE 1/4" = 1'-0"
DATE 12/21/64
DRAWN BY [Signature]
CHECKED BY [Signature]
TRACED BY [Signature]

DATE TITLE OF DRAWING MASS.
REVISIONS WALL SECTIONS

SHEET NO. **5**



Notes:
SEE DETAILS SH #6
SEE ALSO SH #3 FOR SECTS 11 THRU 19 & SH #7 FOR SECTS 21 THRU 26

WALTER BOYD
REGISTERED ARCHITECT
No. 750
BOSTON, MASS.

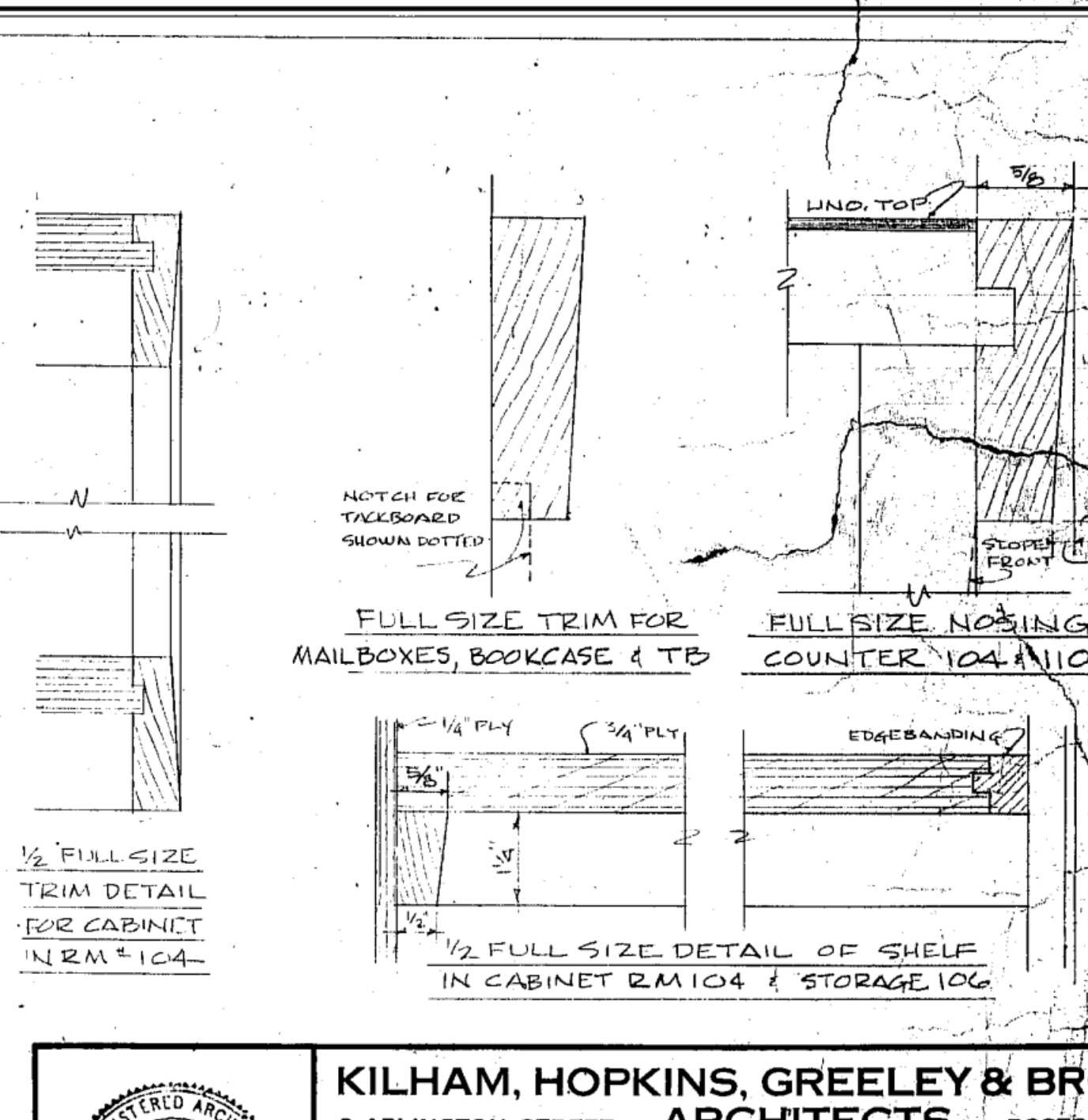
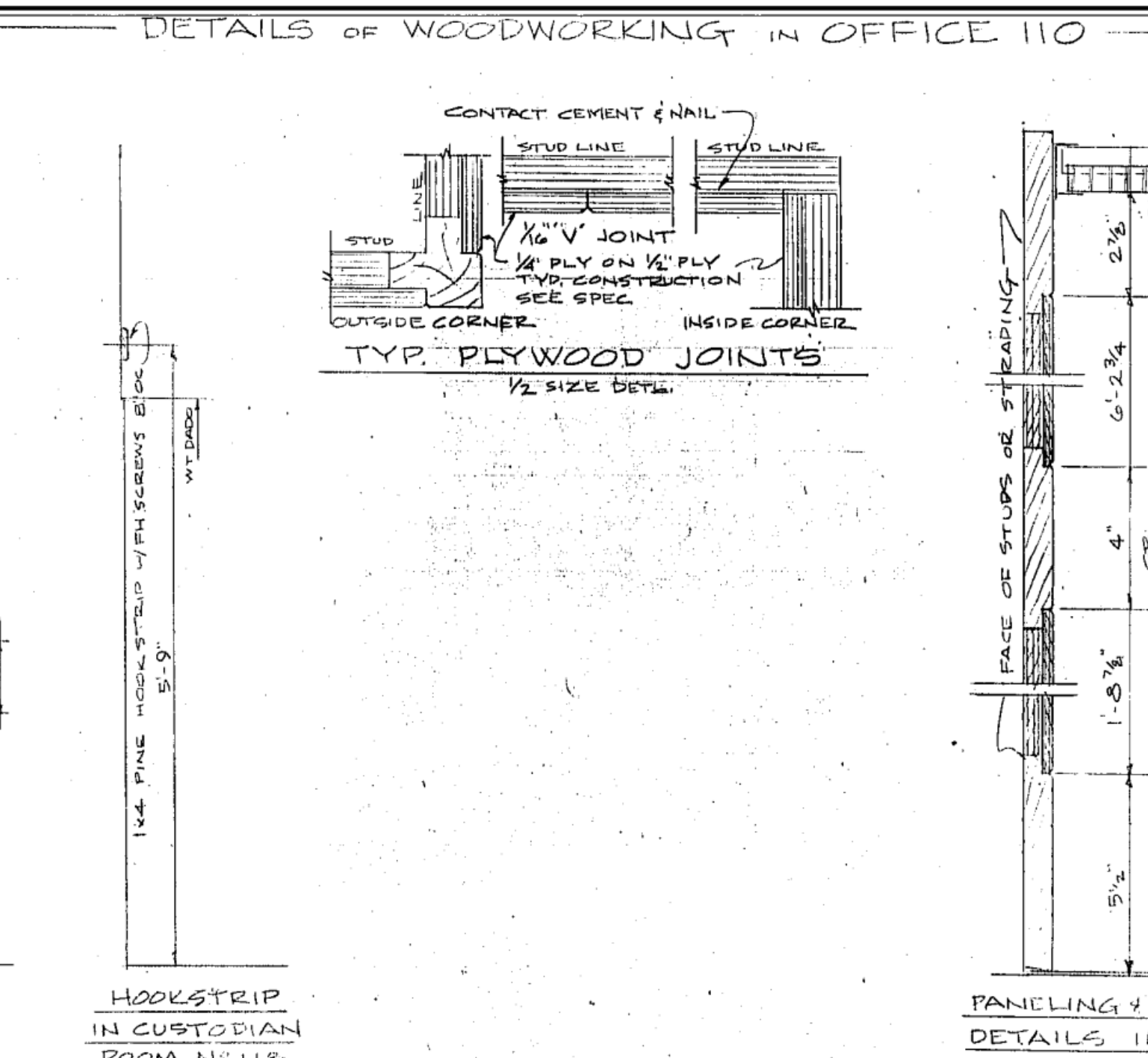
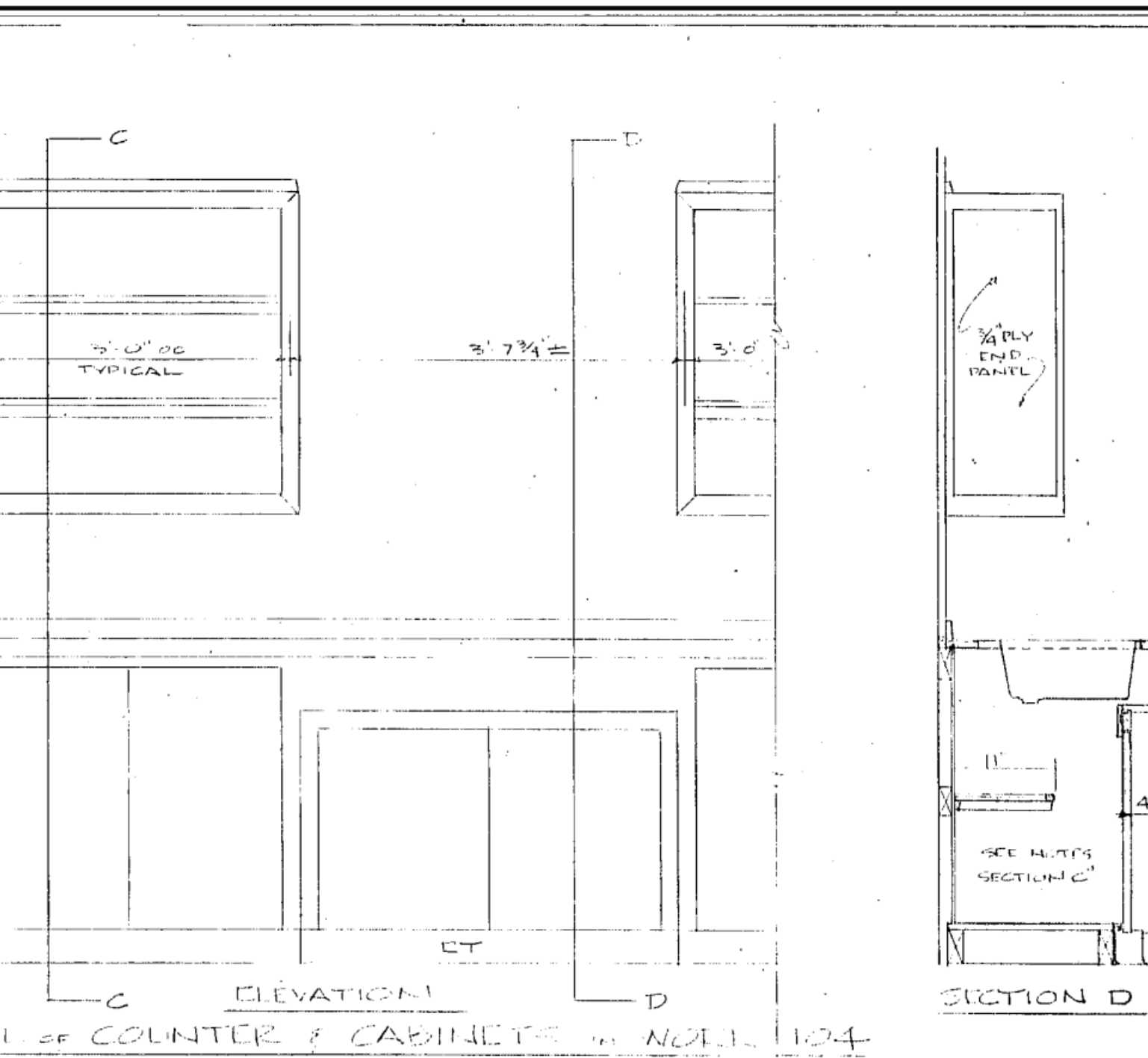
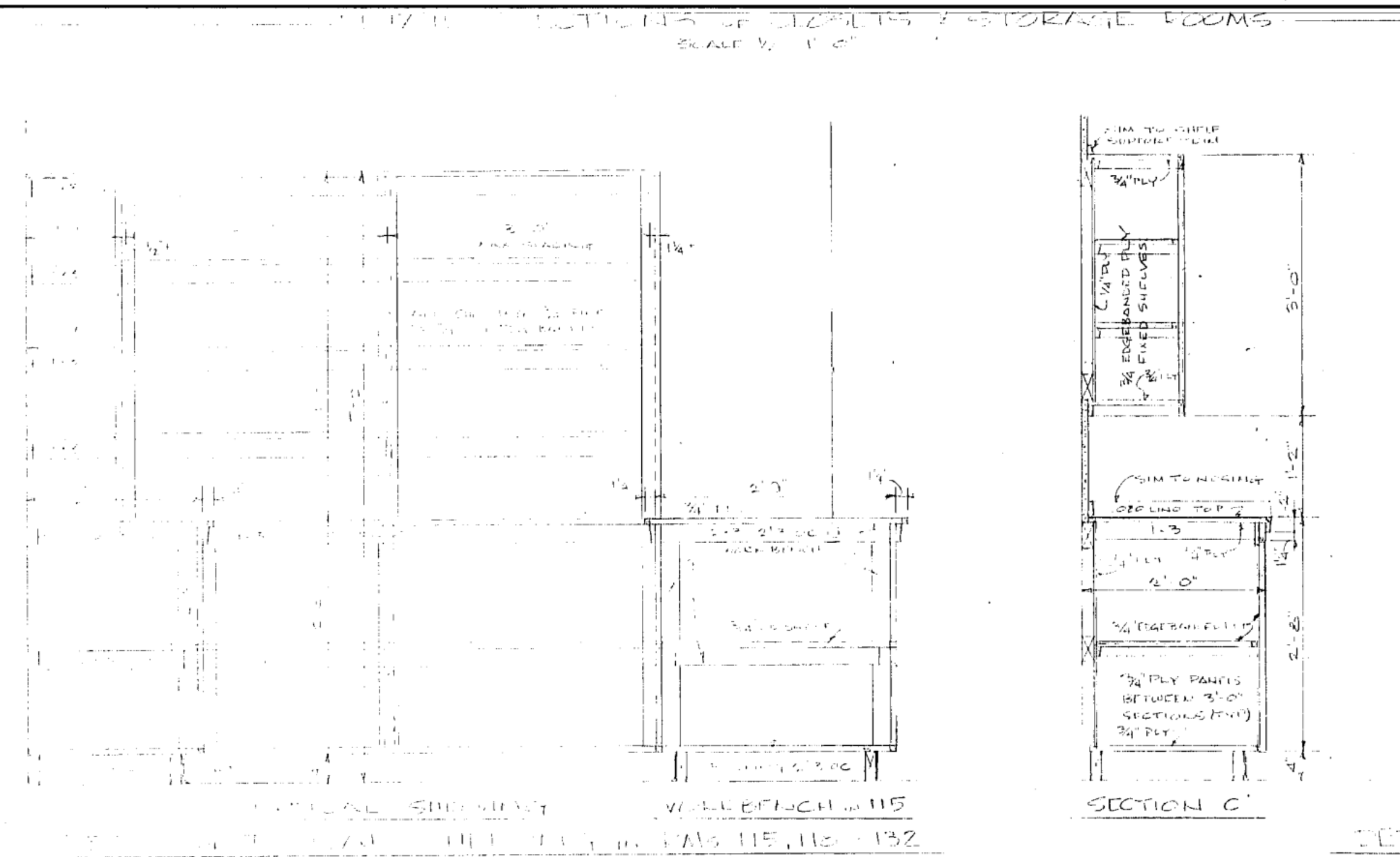
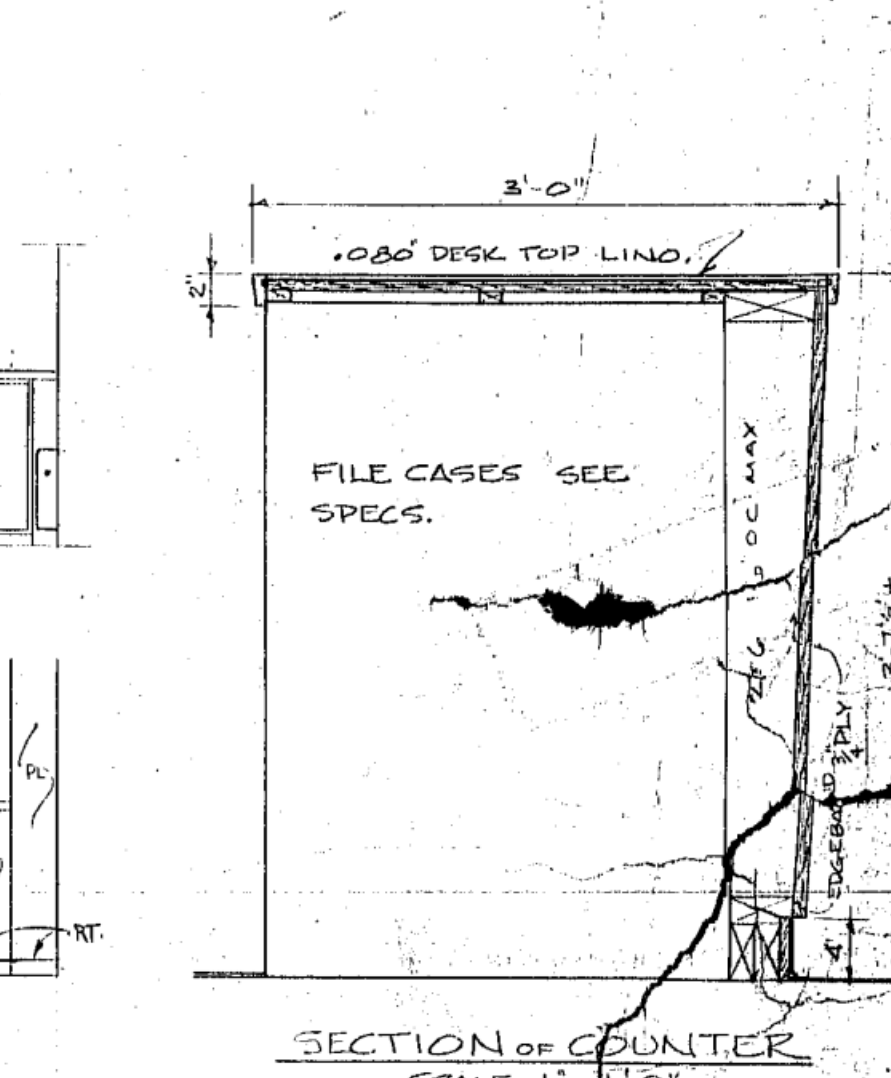
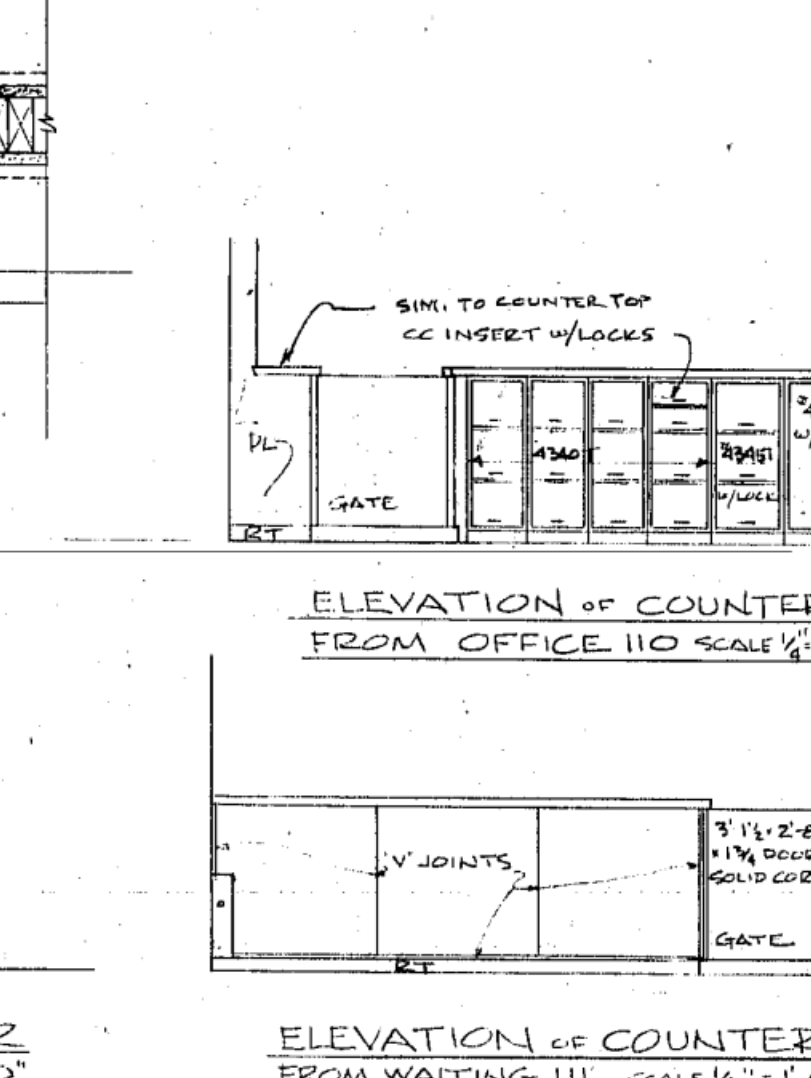
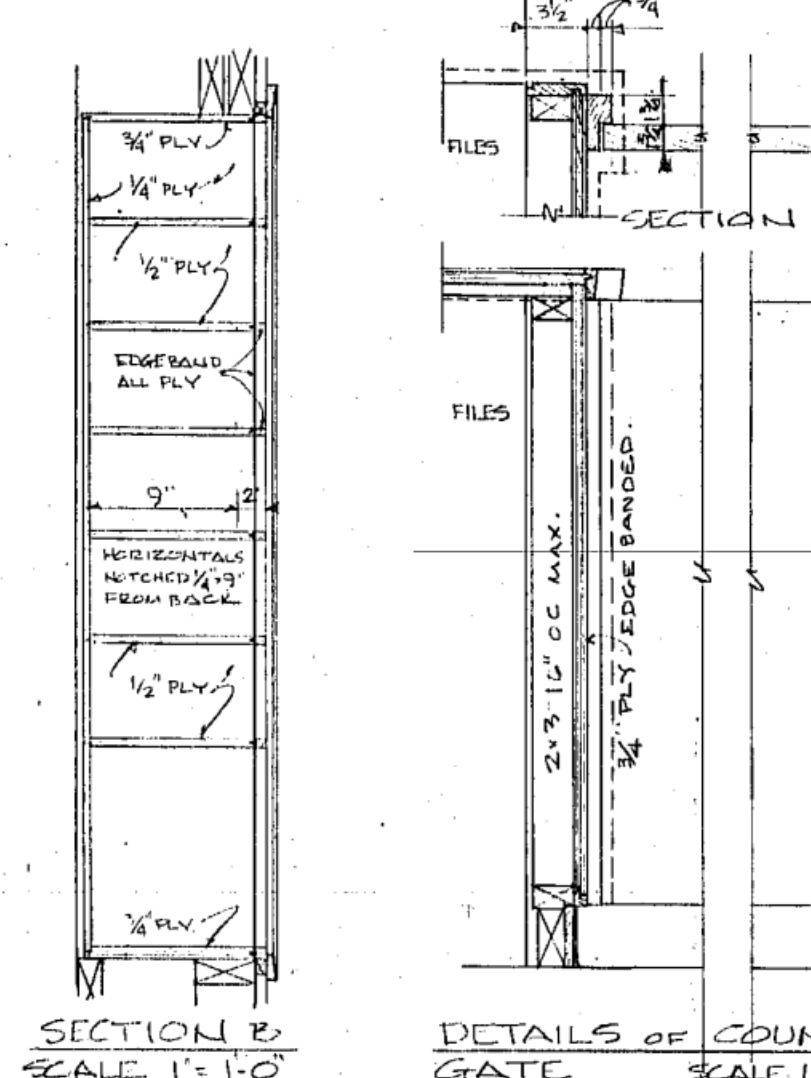
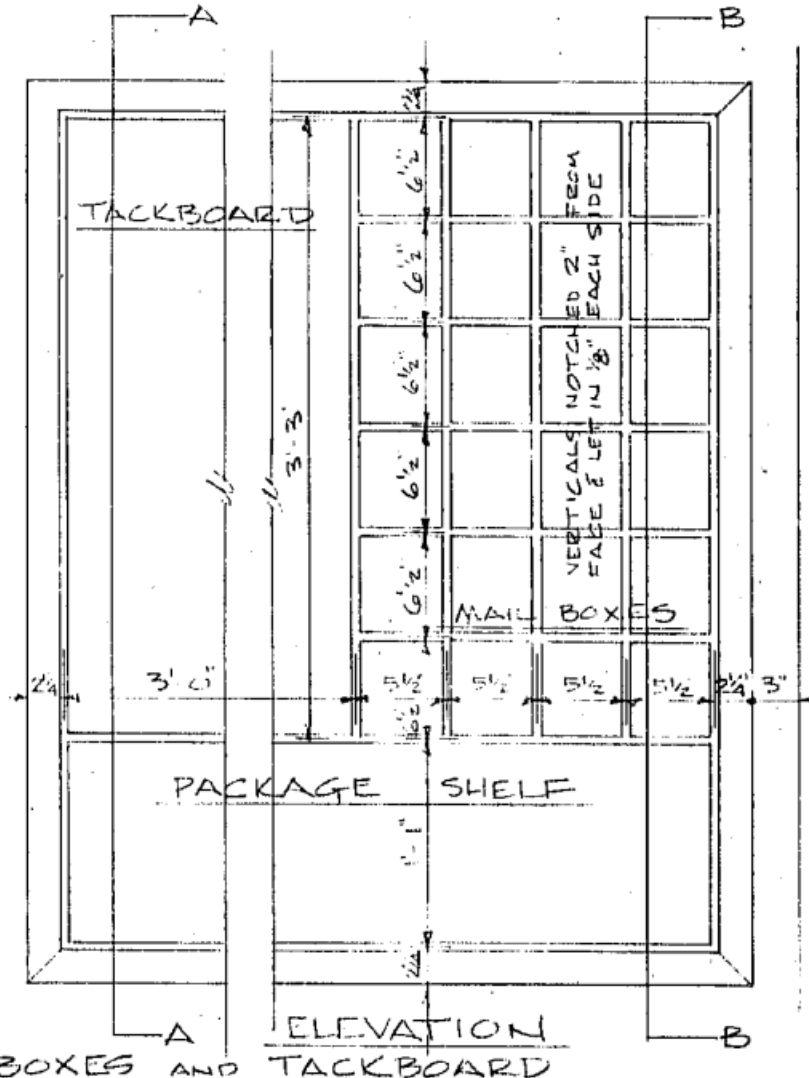
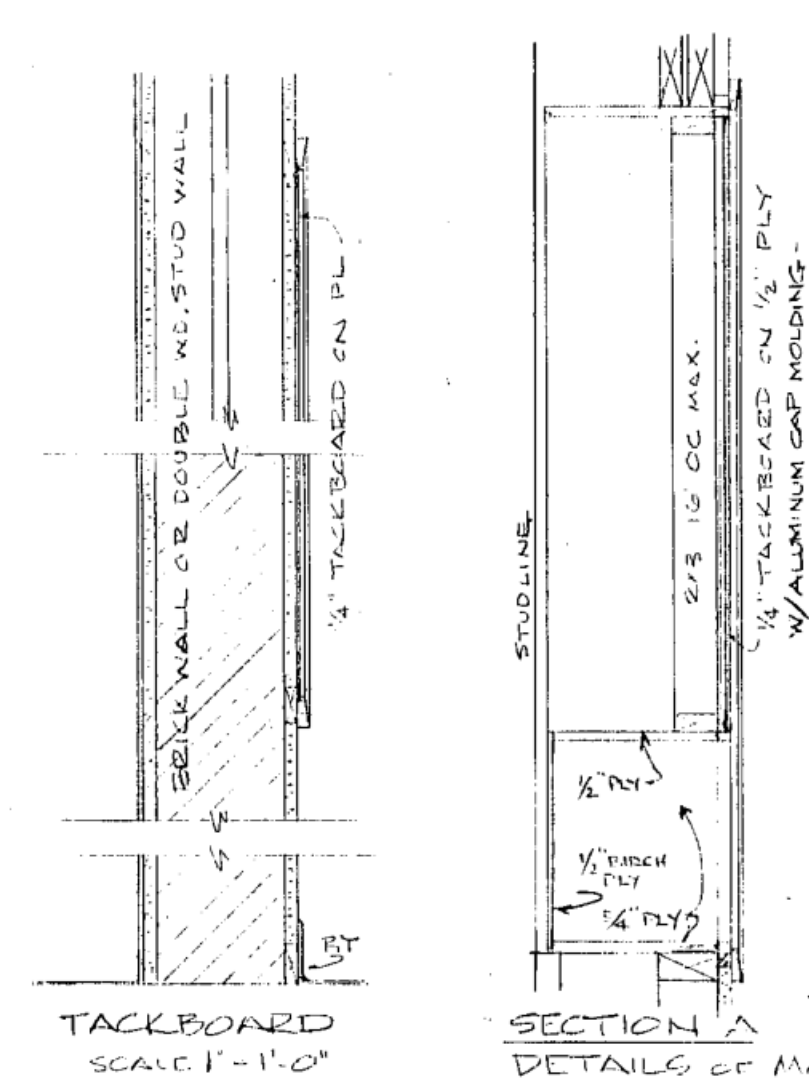
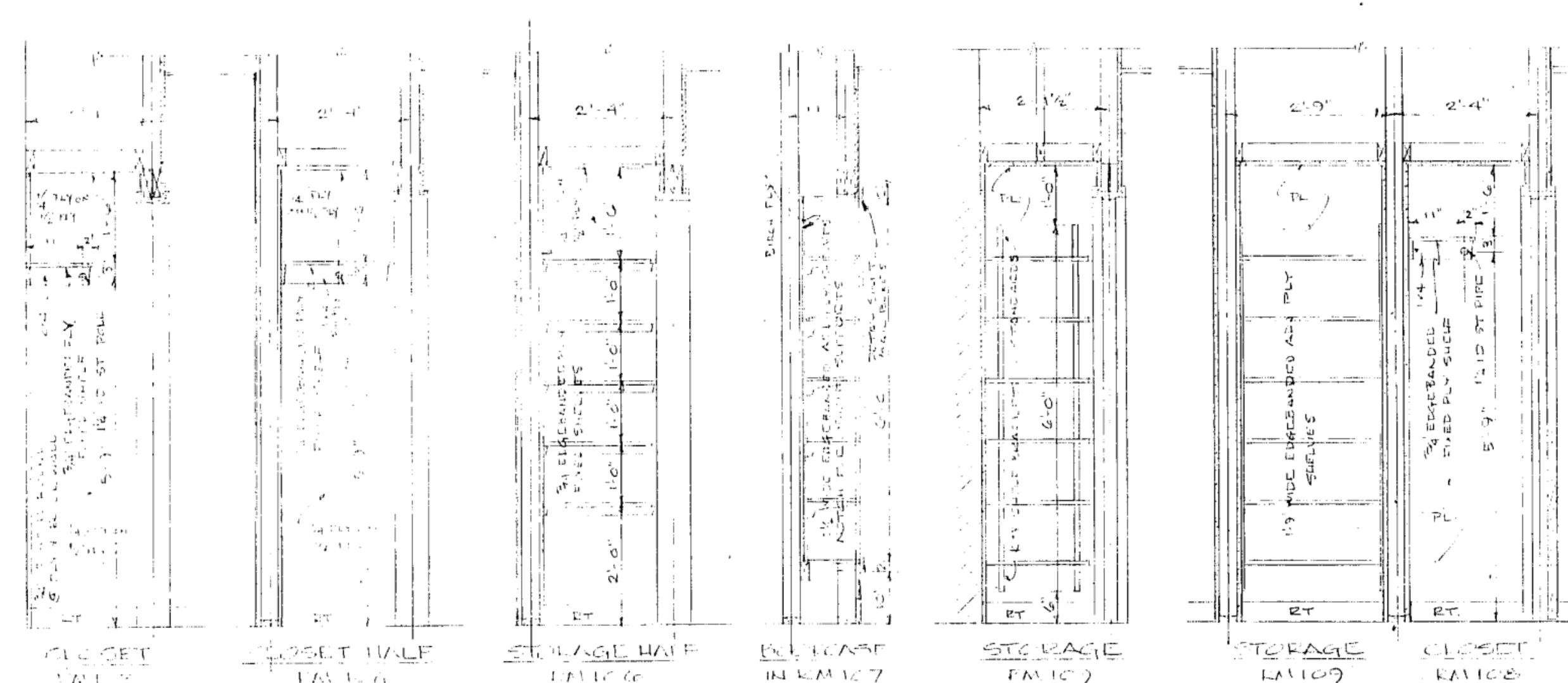
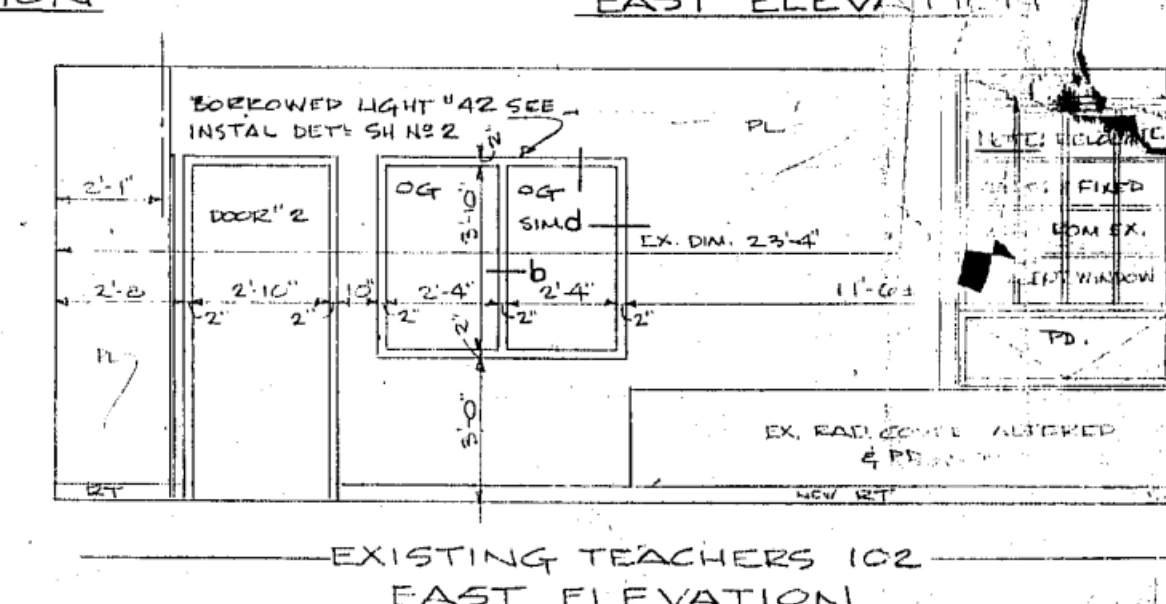
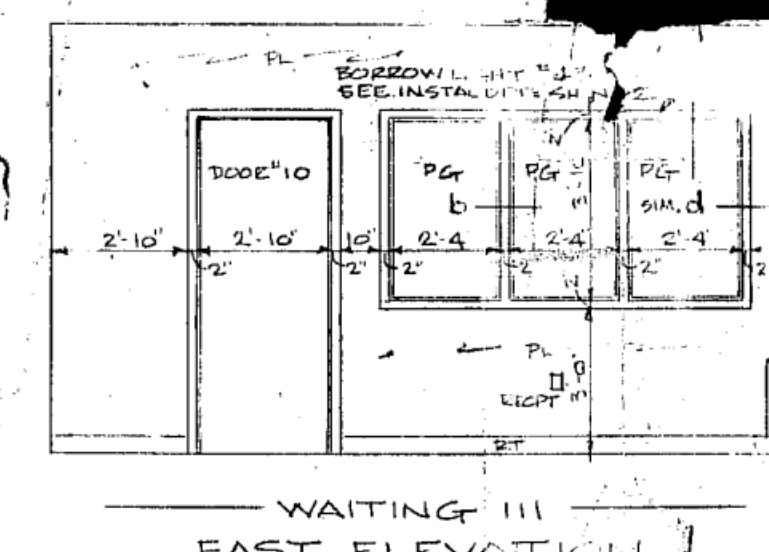
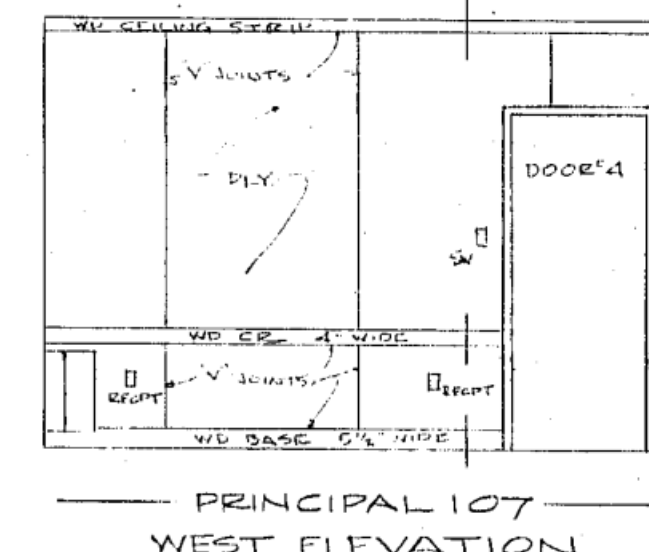
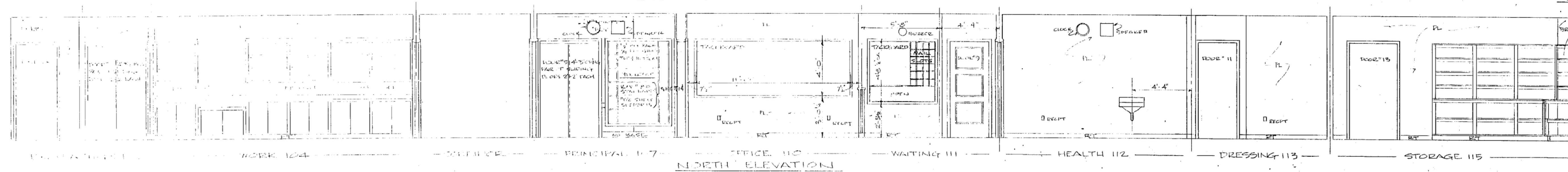
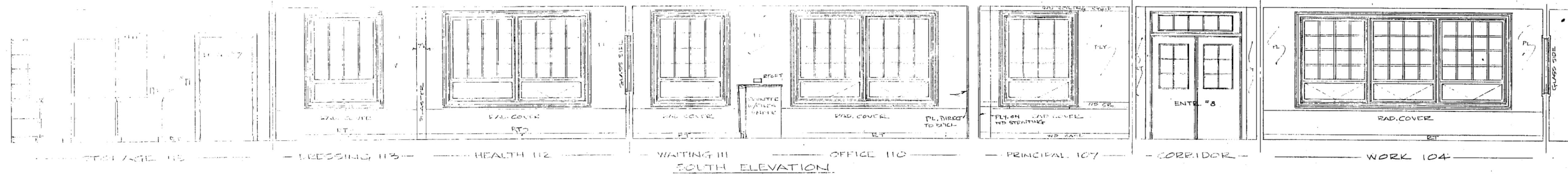
KILHAM, HOPKINS, GREELEY & BRODIE
ARCHITECTS
9 ARLINGTON STREET
BOSTON, MASS.

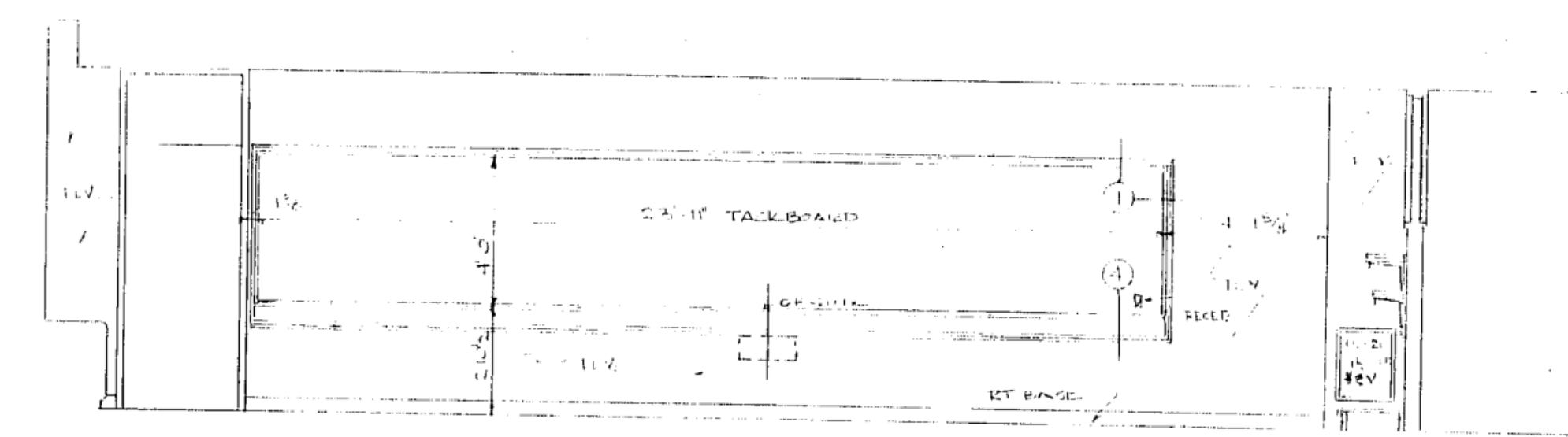
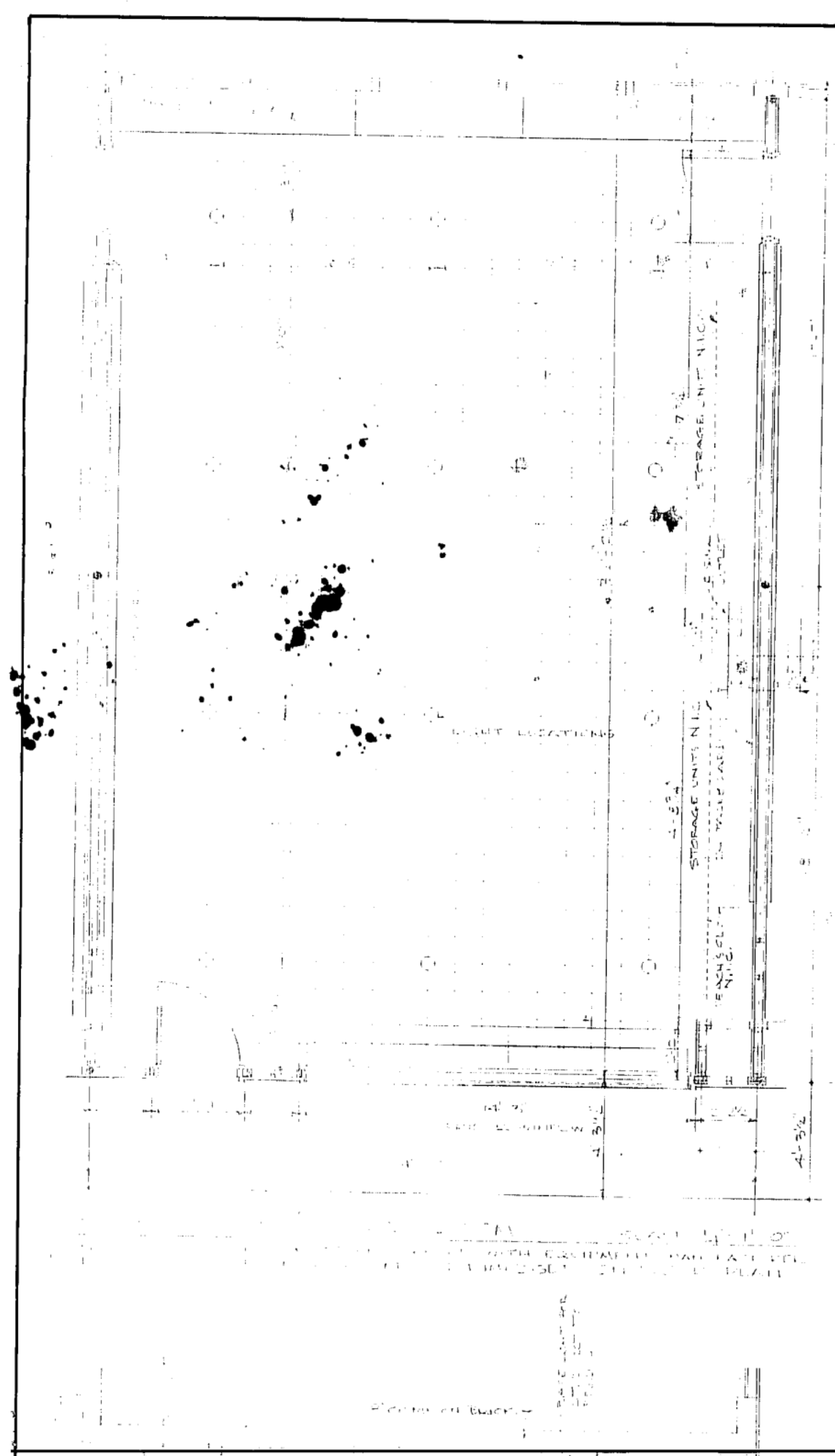
HALIFAX ELEMENTARY SCHOOL
ADDITION TO THE
HALIFAX, MASS.

REVISIONS

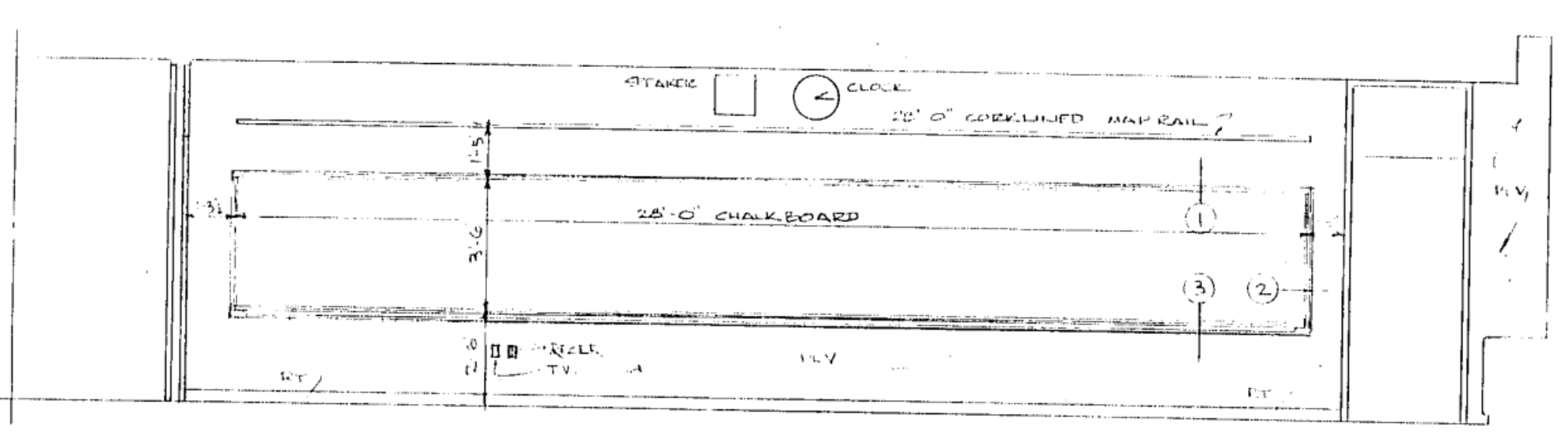
NO.	DATE	TITLE OF DRAWING
1		WALL SECTIONS

SHEET NO.
5



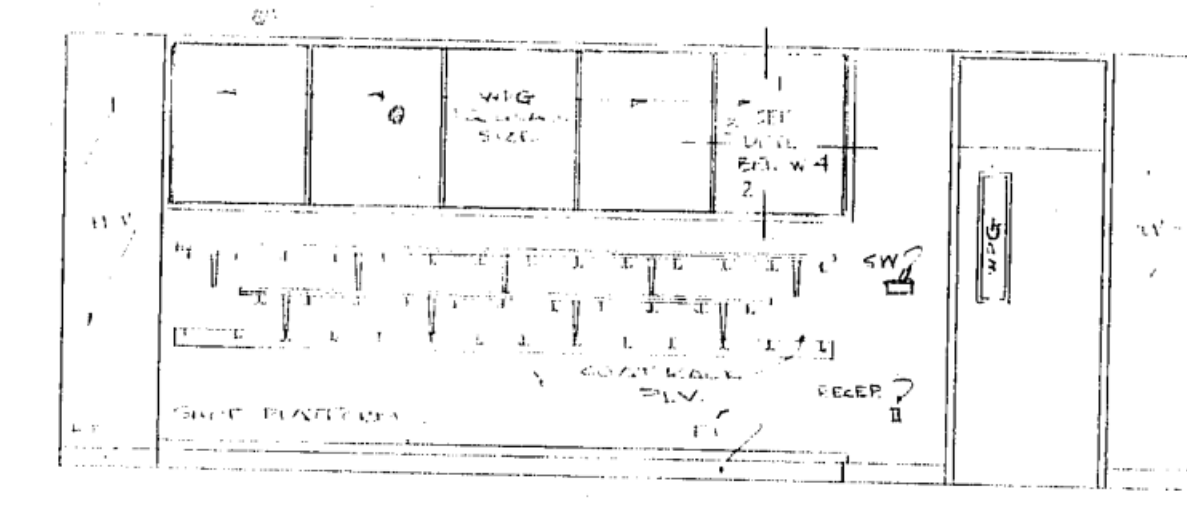


ELEVATION OF SINK & TACKBOARD WALL

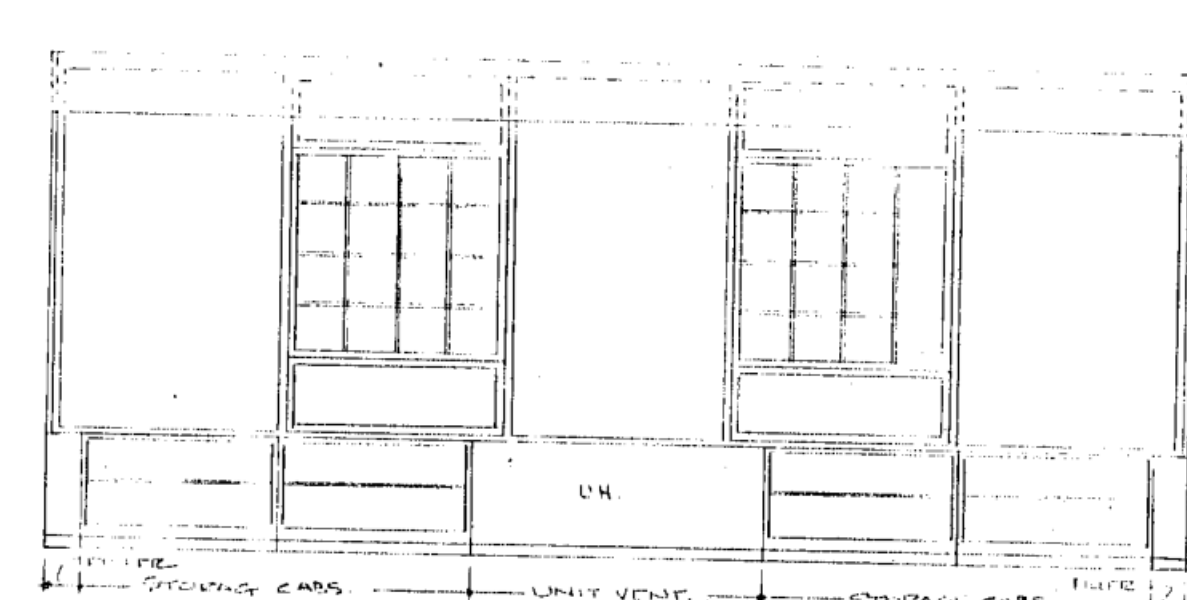


ELEVATION OF CHALKBOARD WALL

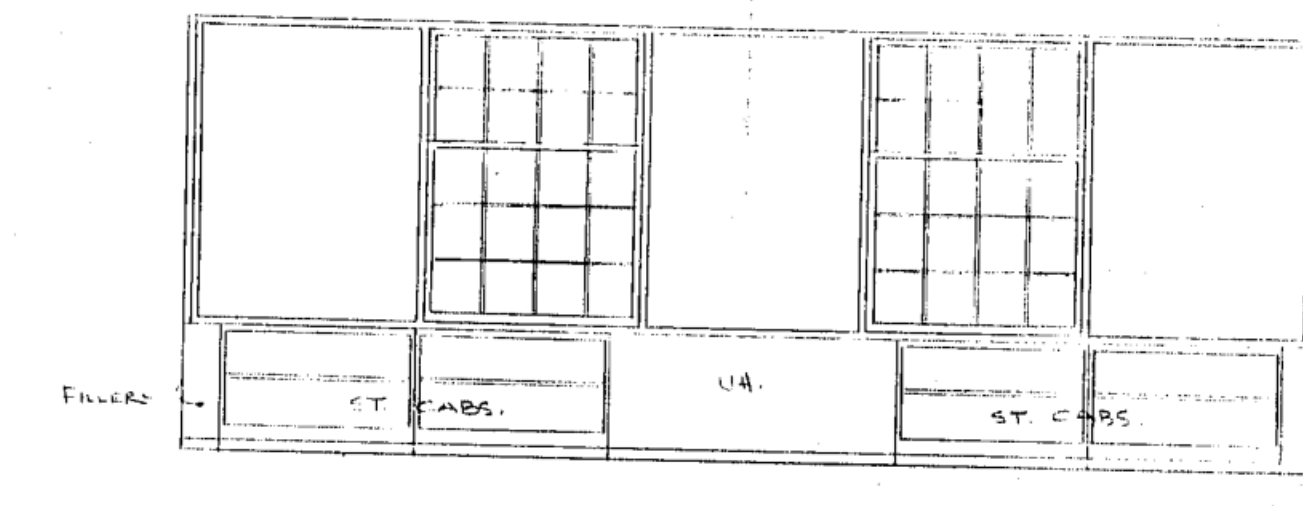
SCALE 1/4" = 1'-0"



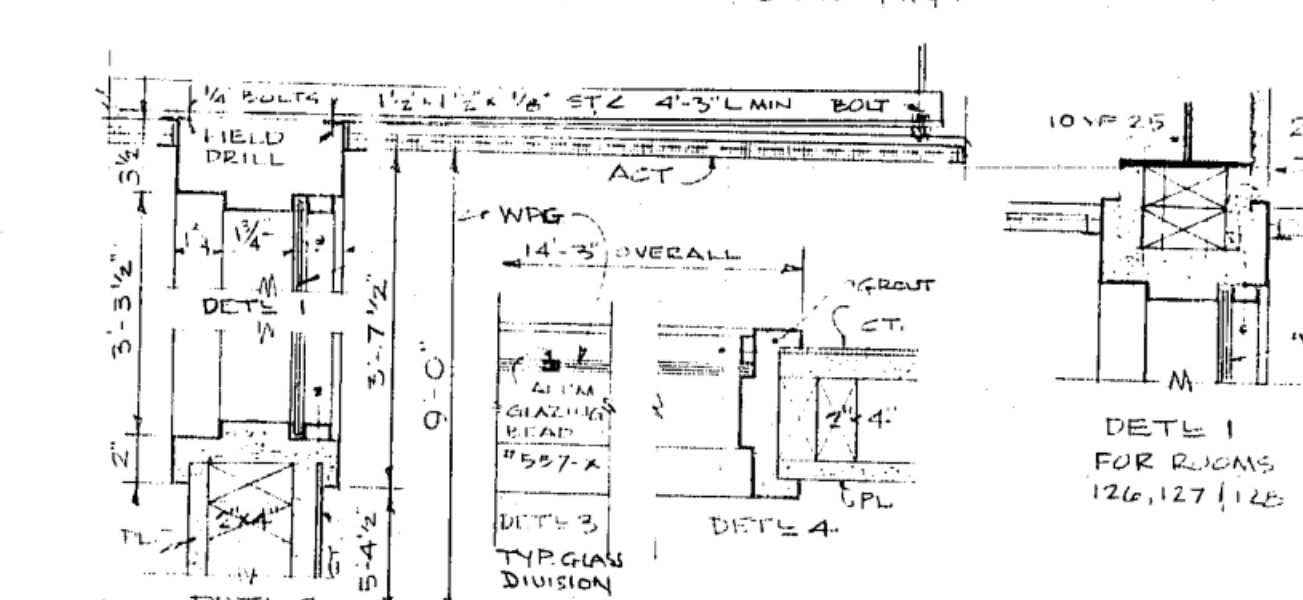
ELEVATION OF CORRIDOR WALL



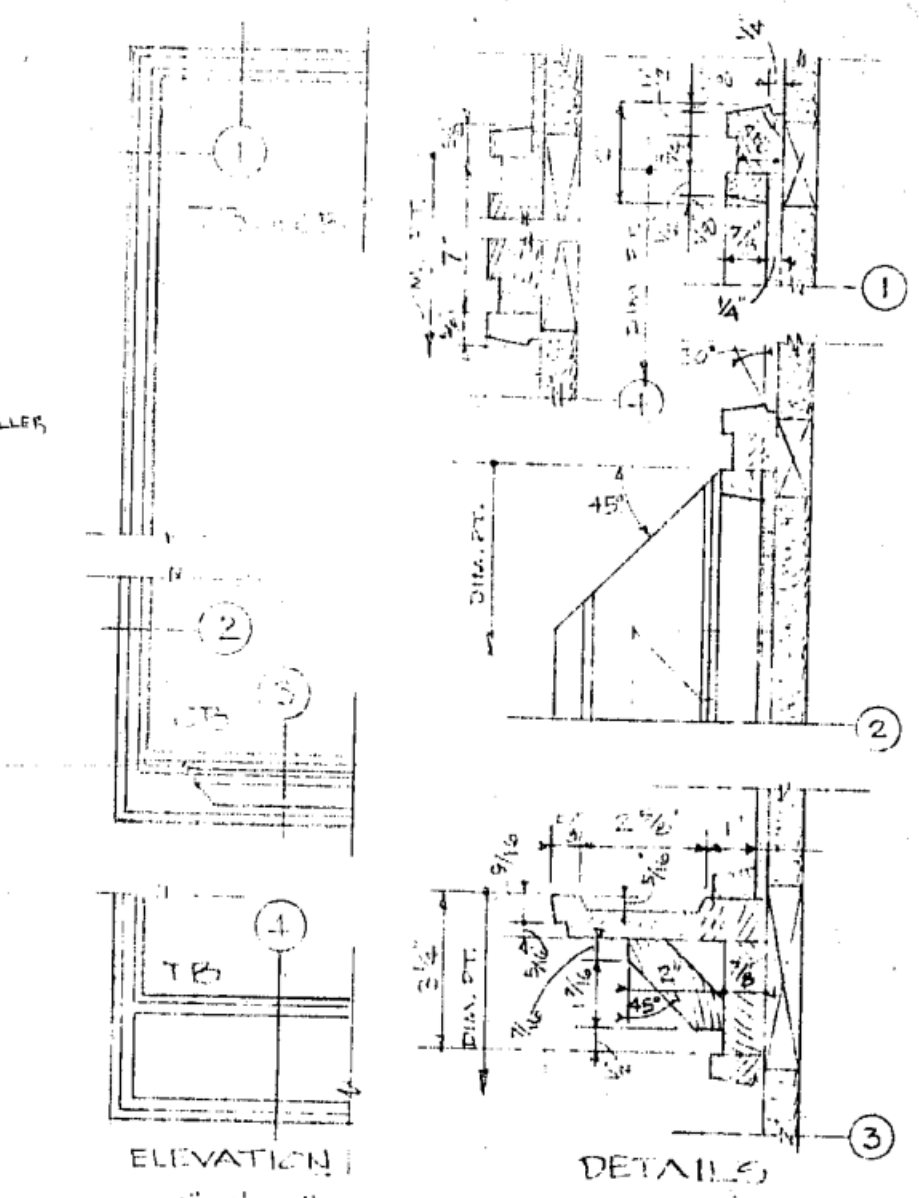
ELEVATION OF WINDOW WALL



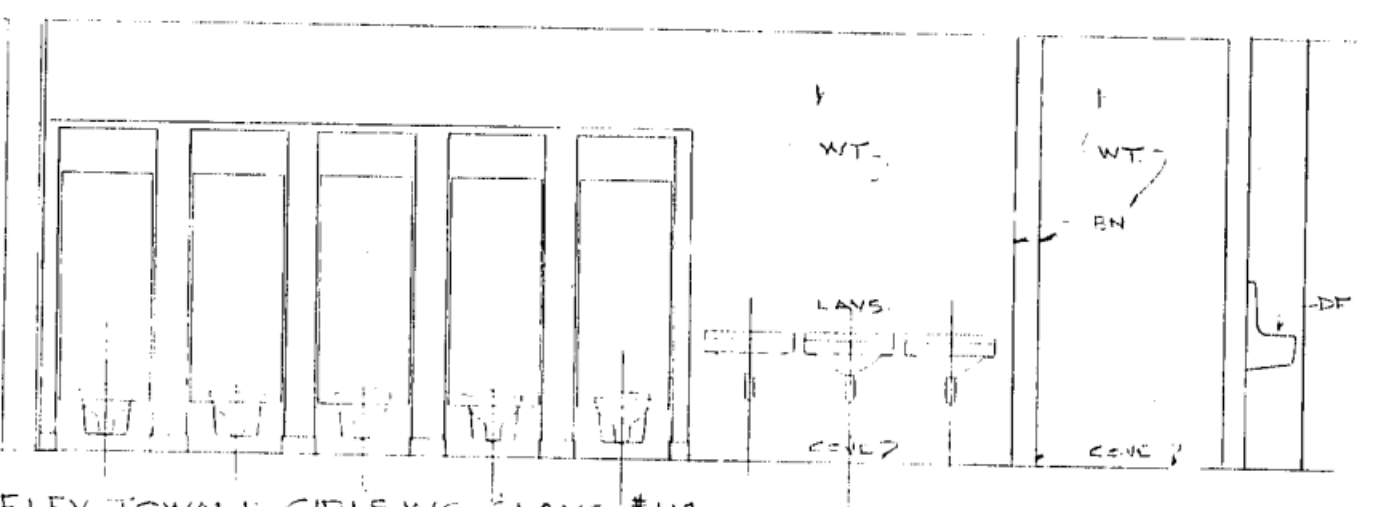
ELEVATION OF WINDOW WALL



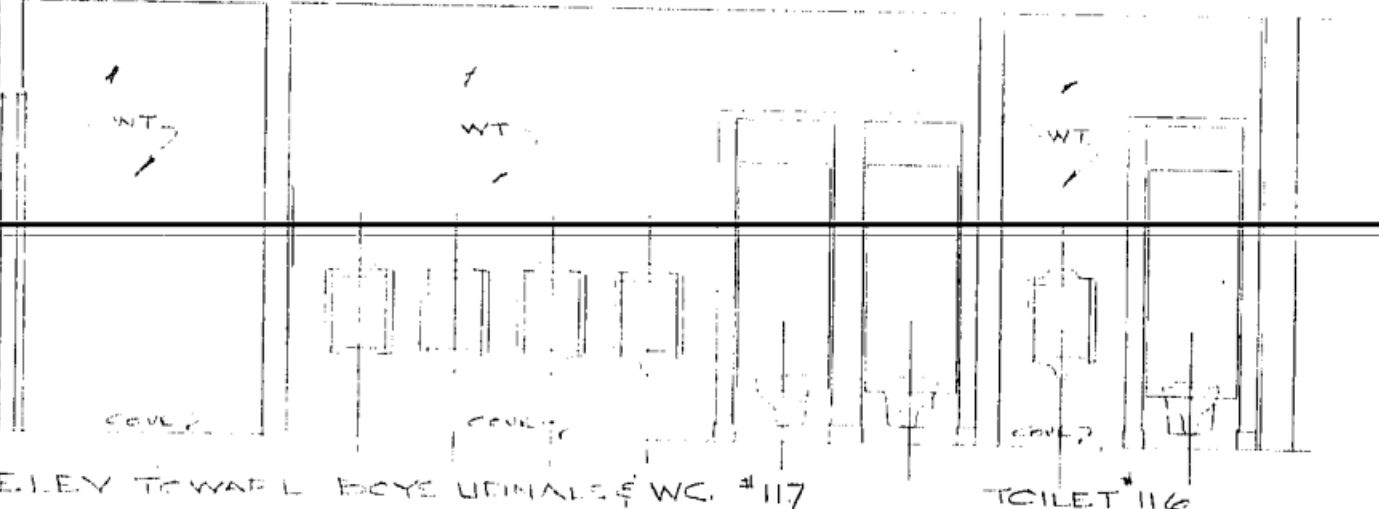
DETAILS OF CORRIDOR WINDOW



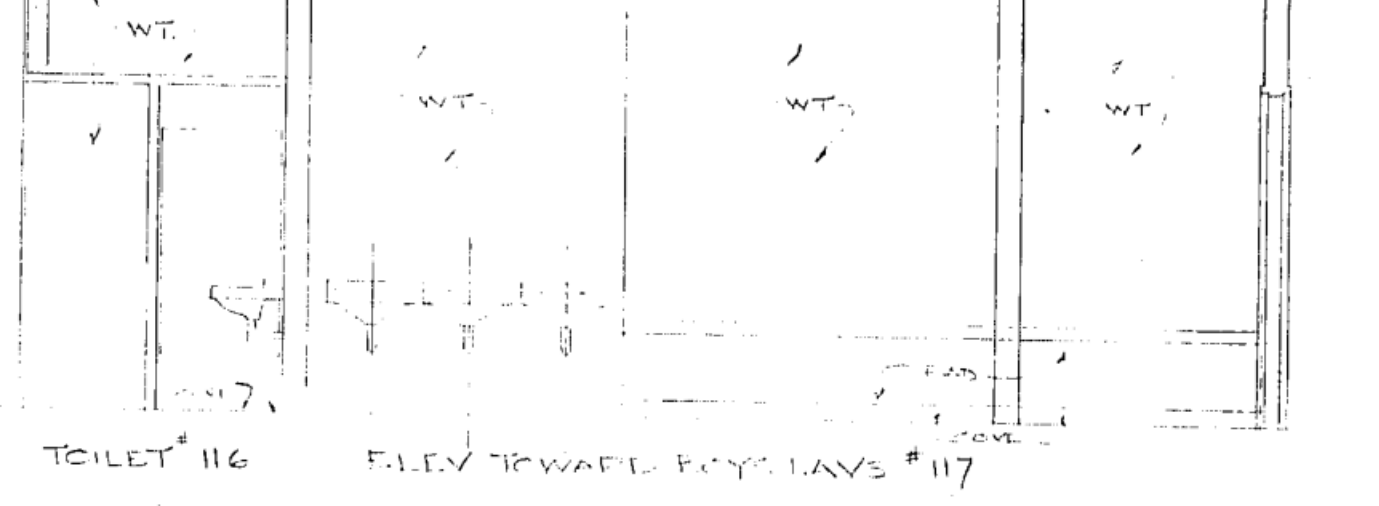
DETAILS OF CHALK & TACKBOARDS



ELEV. TOWARD GIRLS WC & LAVS



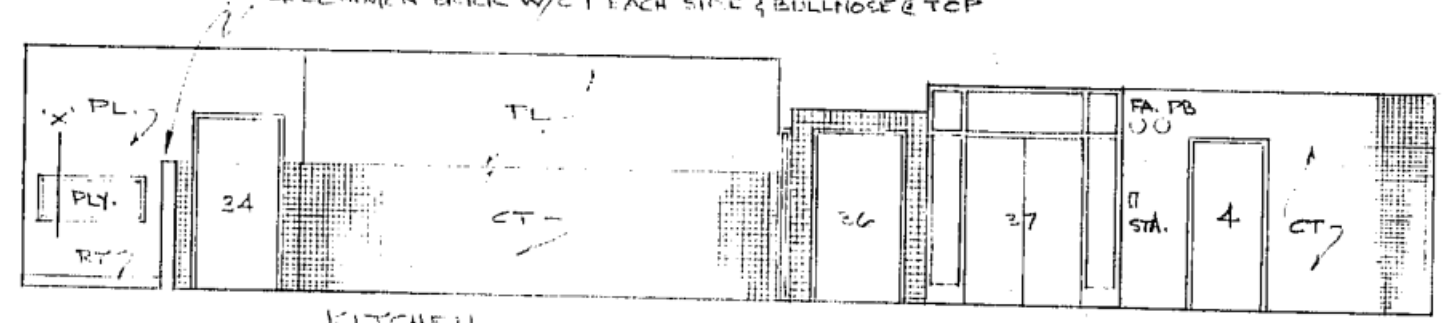
ELEV. TOWARD BOYS URINALS & WC



ELEV. TOWARD BOYS LAVS



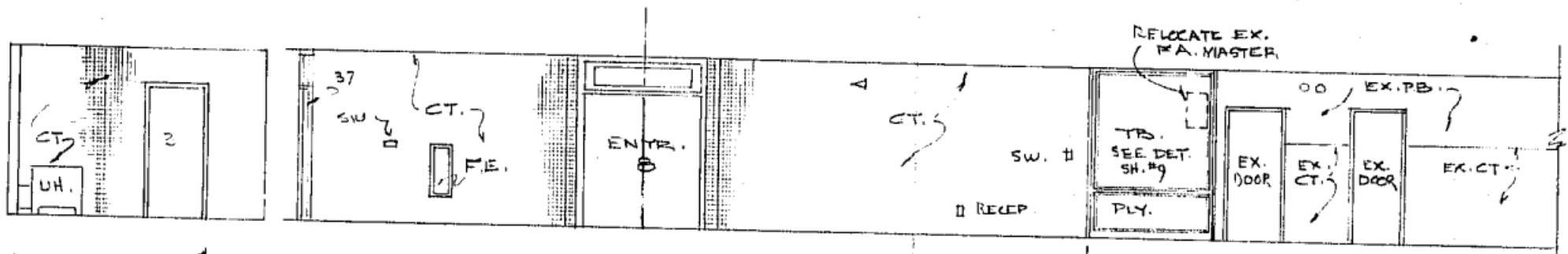
ELEV. TOWARD LAV TOILET



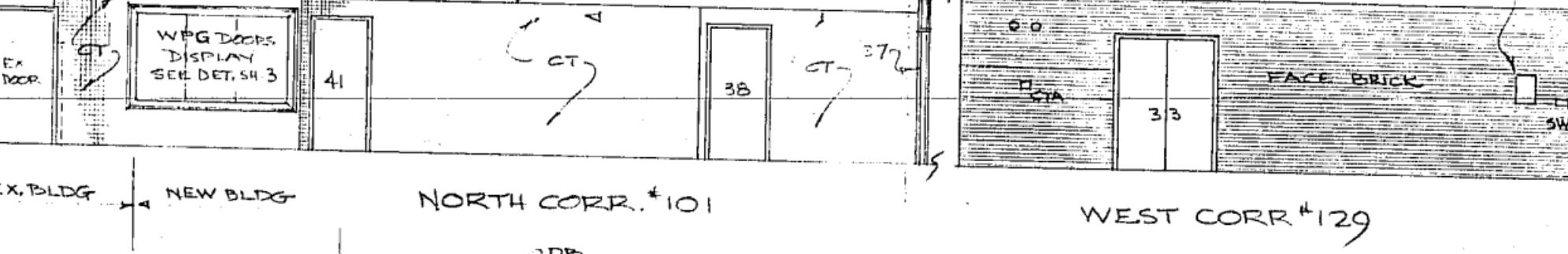
EAST ELEV.



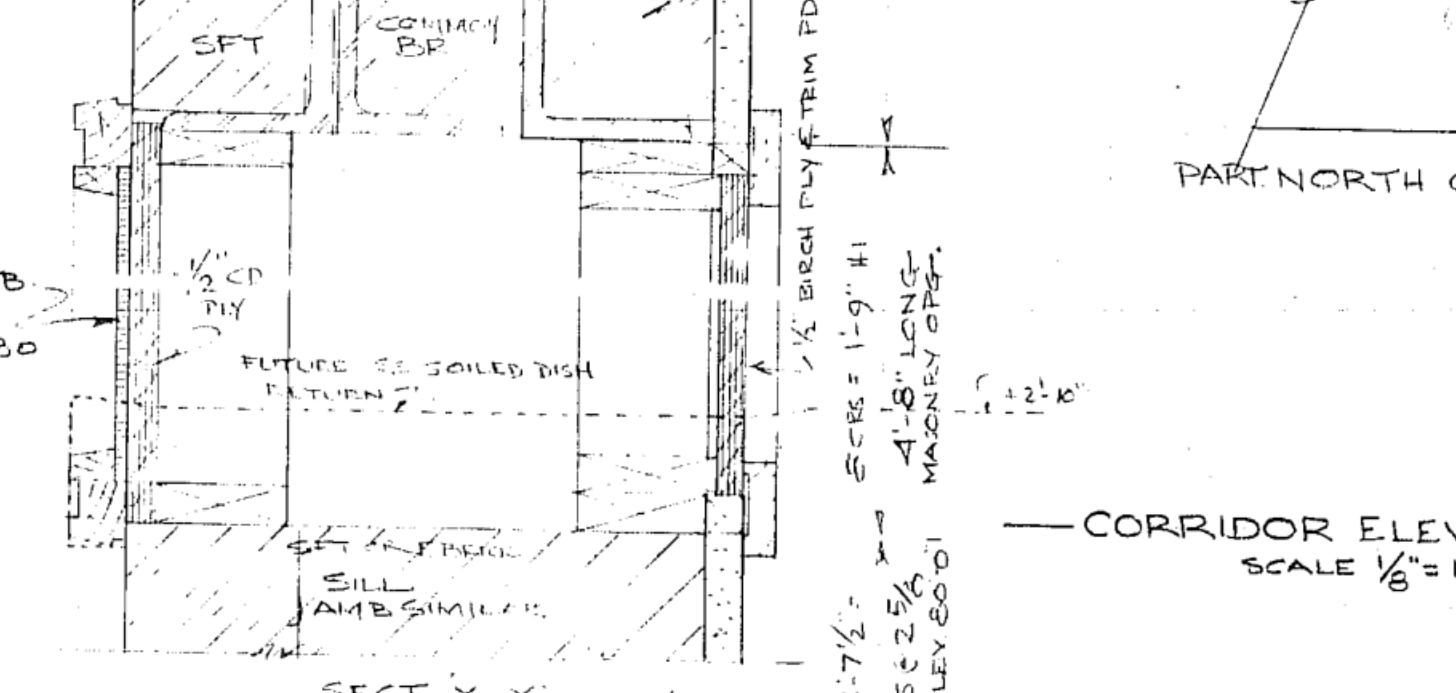
SOUTH ELEV.



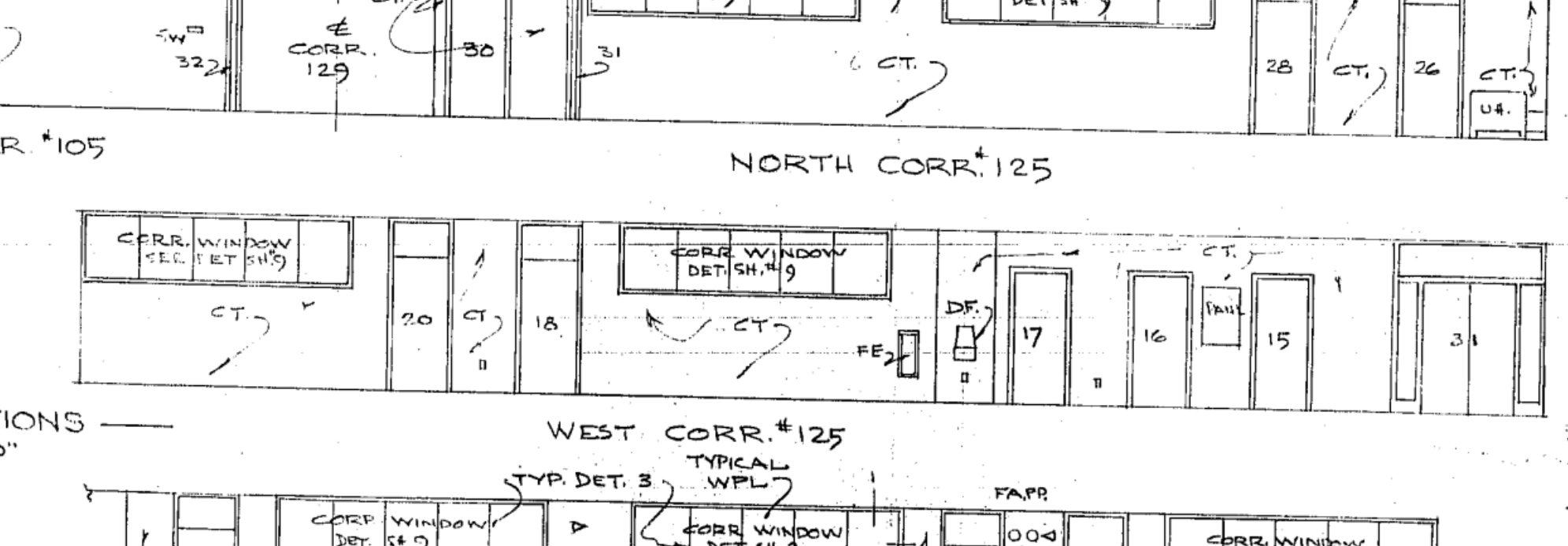
WEST ELEV.



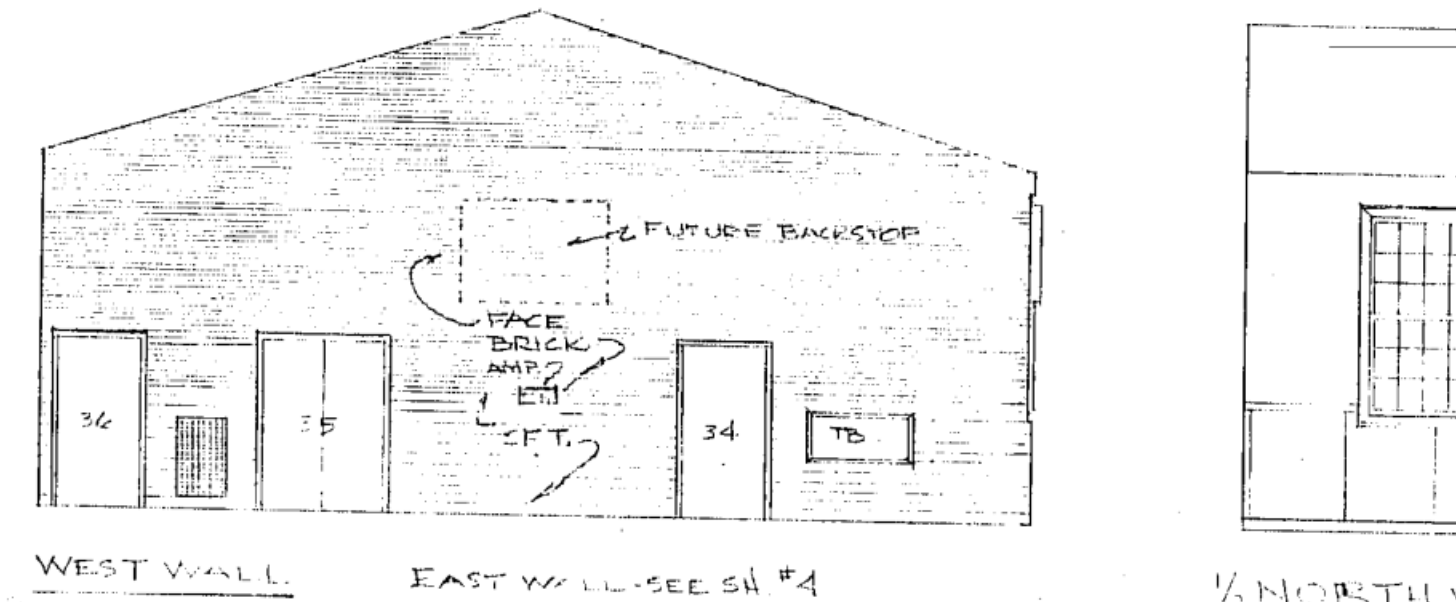
NORTH ELEV.



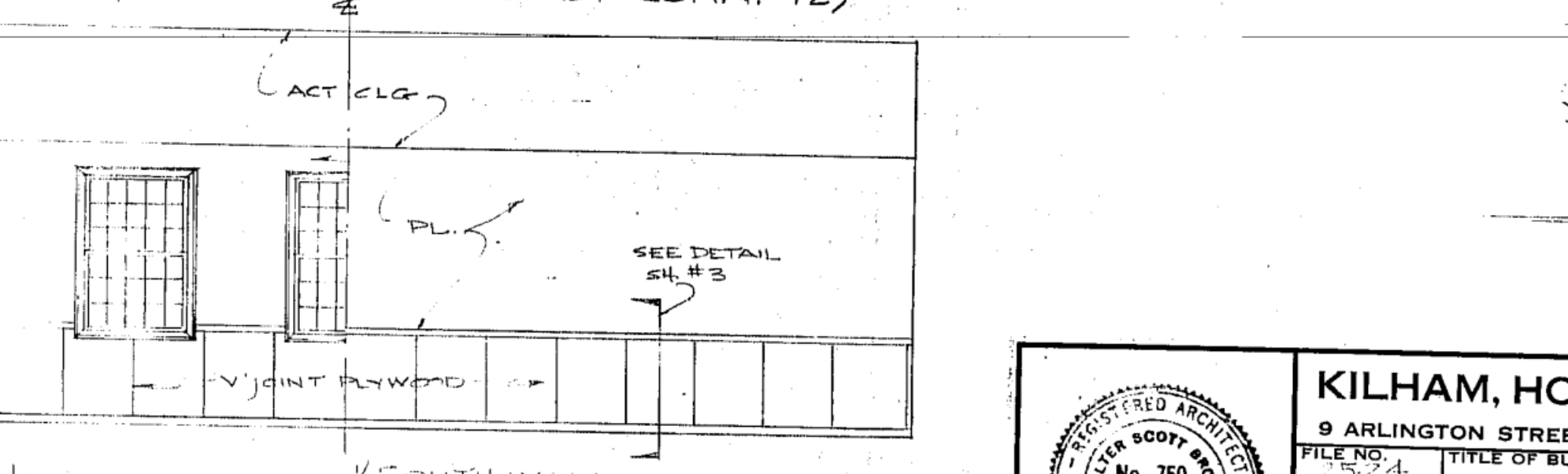
CORRIDOR ELEVATIONS



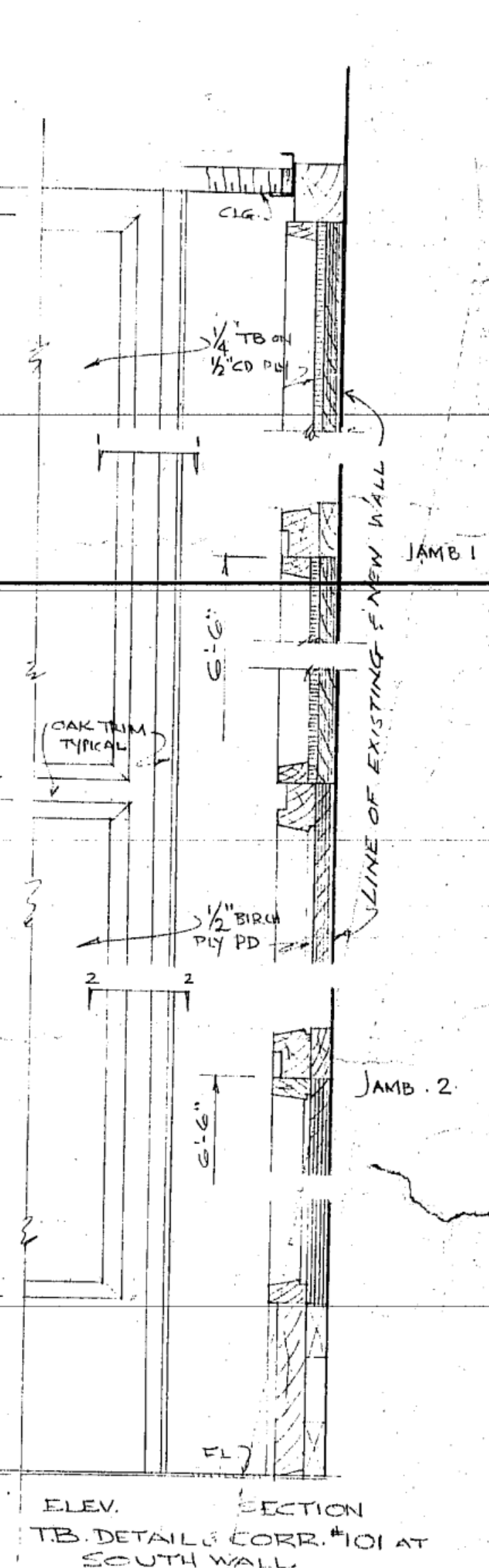
EAST CORRIDOR ELEVATIONS



WEST WALL



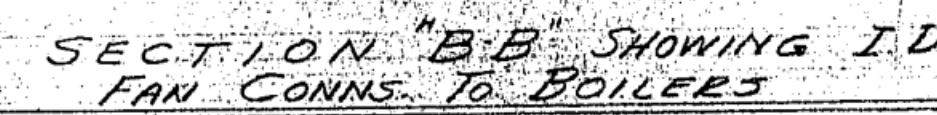
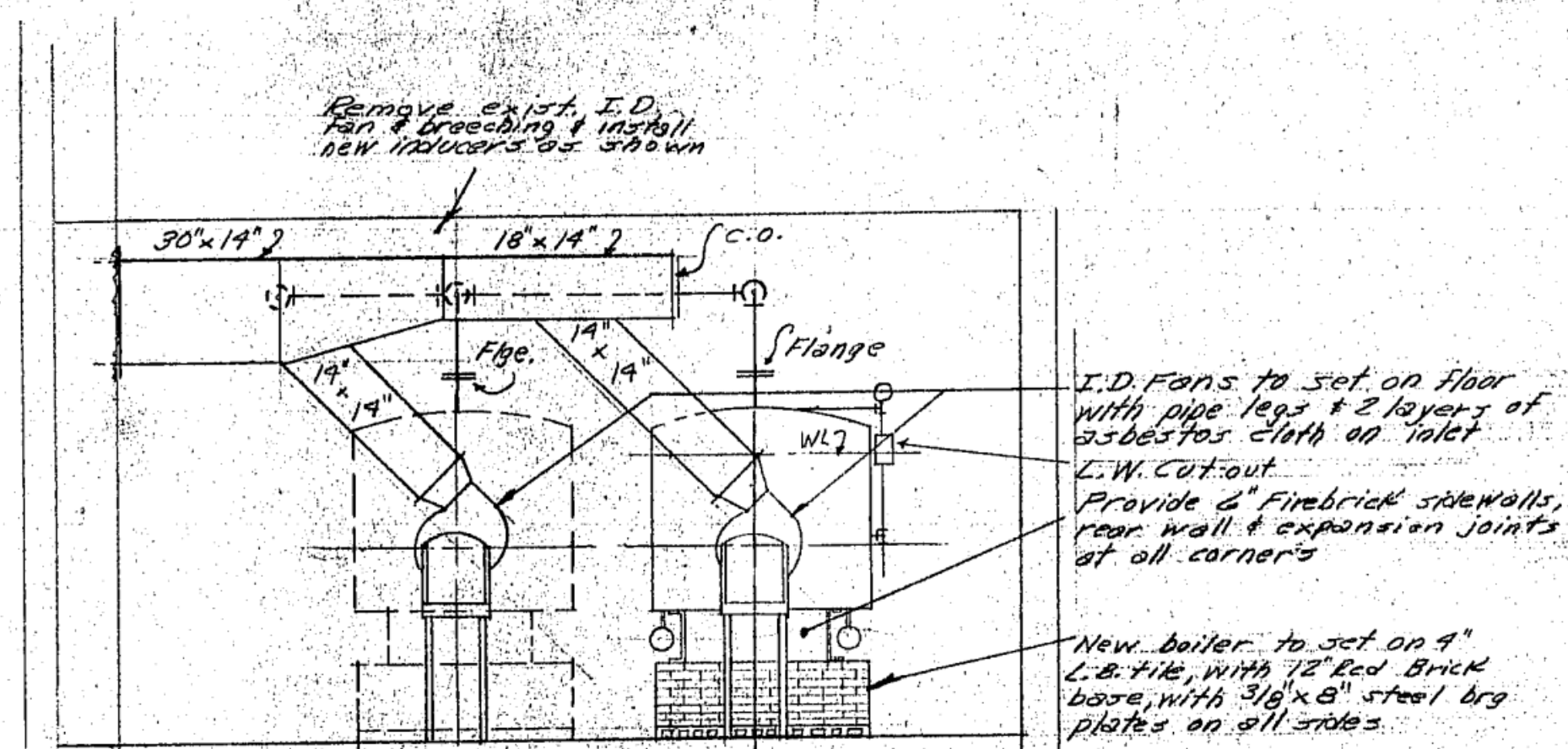
EAST WALL



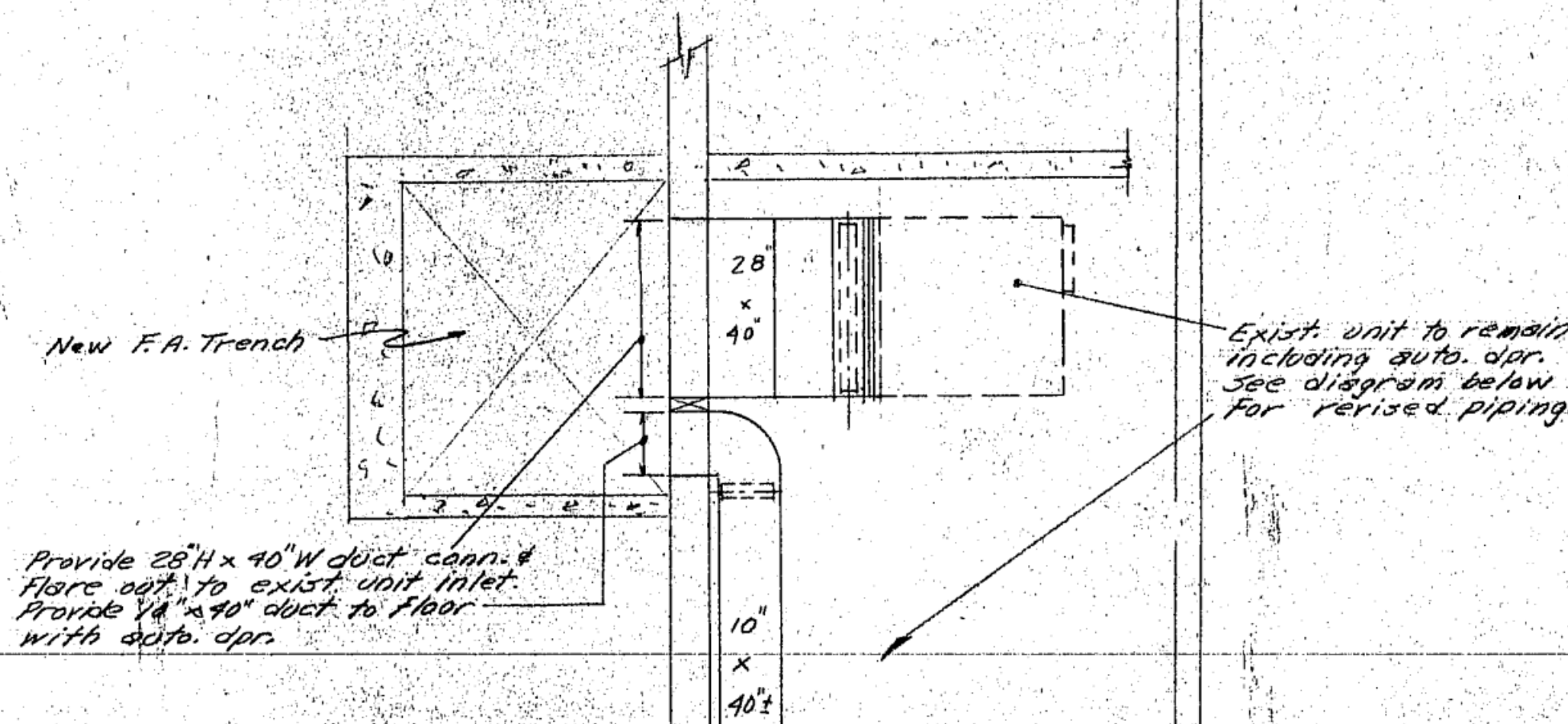
SECTION



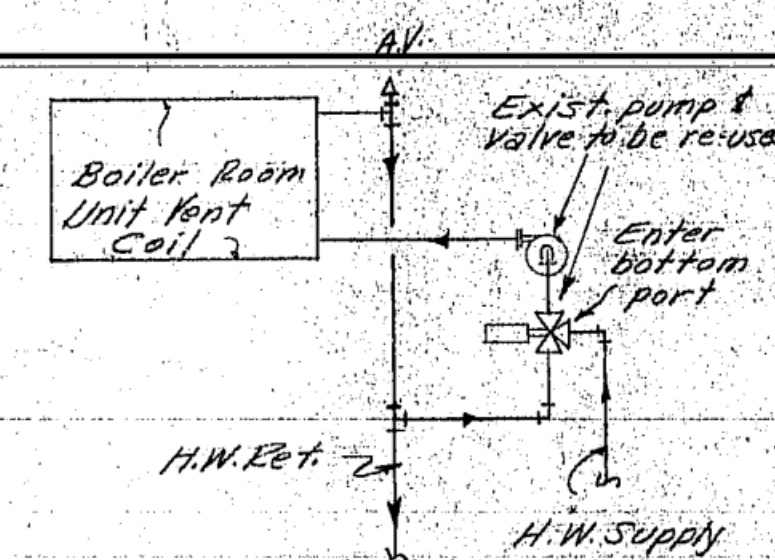
KILHAM, HOPKINS, GREELEY & BRODIE
9 ARLINGTON STREET BOSTON, MASS.
ARCHITECTS
FILE NO. 750
SCALE 1/8" = 1'-0"
DATE 7/27/64
DRAWN BY
TRACED BY



SCALE 1/4" = 1'-0"

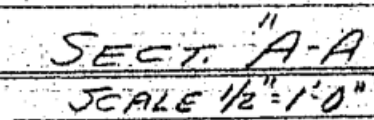


Provide 28"H x 40"W duct conn.
Floor out to exist. unit inlet.
Provide 14" x 40" duct to floor—
with auto. dpr.

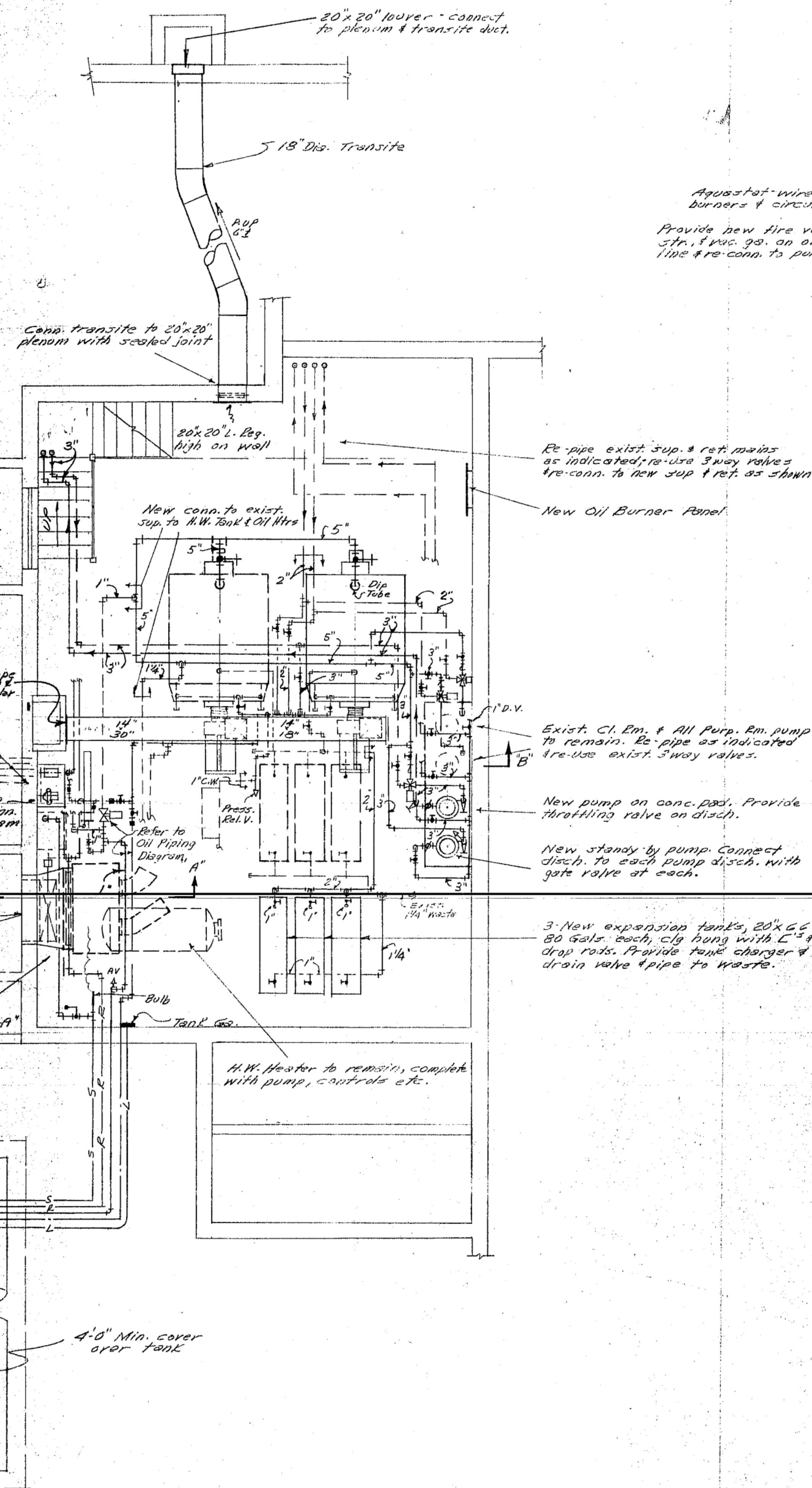
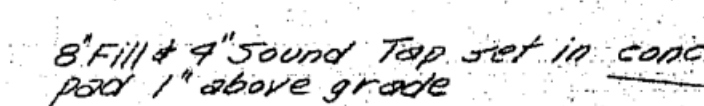
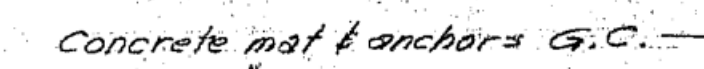
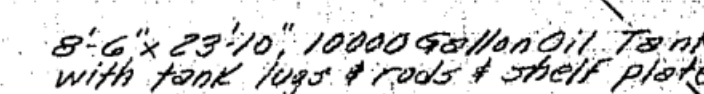
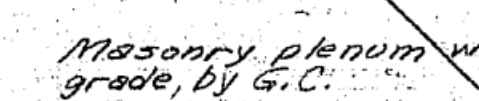
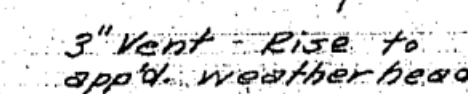


SCHEMATIC DIAGRAM SHOWING
REVISION TO BLR RM UNIT PIPING

NOT TO SCALE



SCALE $\frac{1}{2}" = 1'-0"$



Dis. Transite

Conn. transite to 20"x26"
plenum with sealed join

20" x 20" L. Peg.
high on wall

New Oil Burner Panel

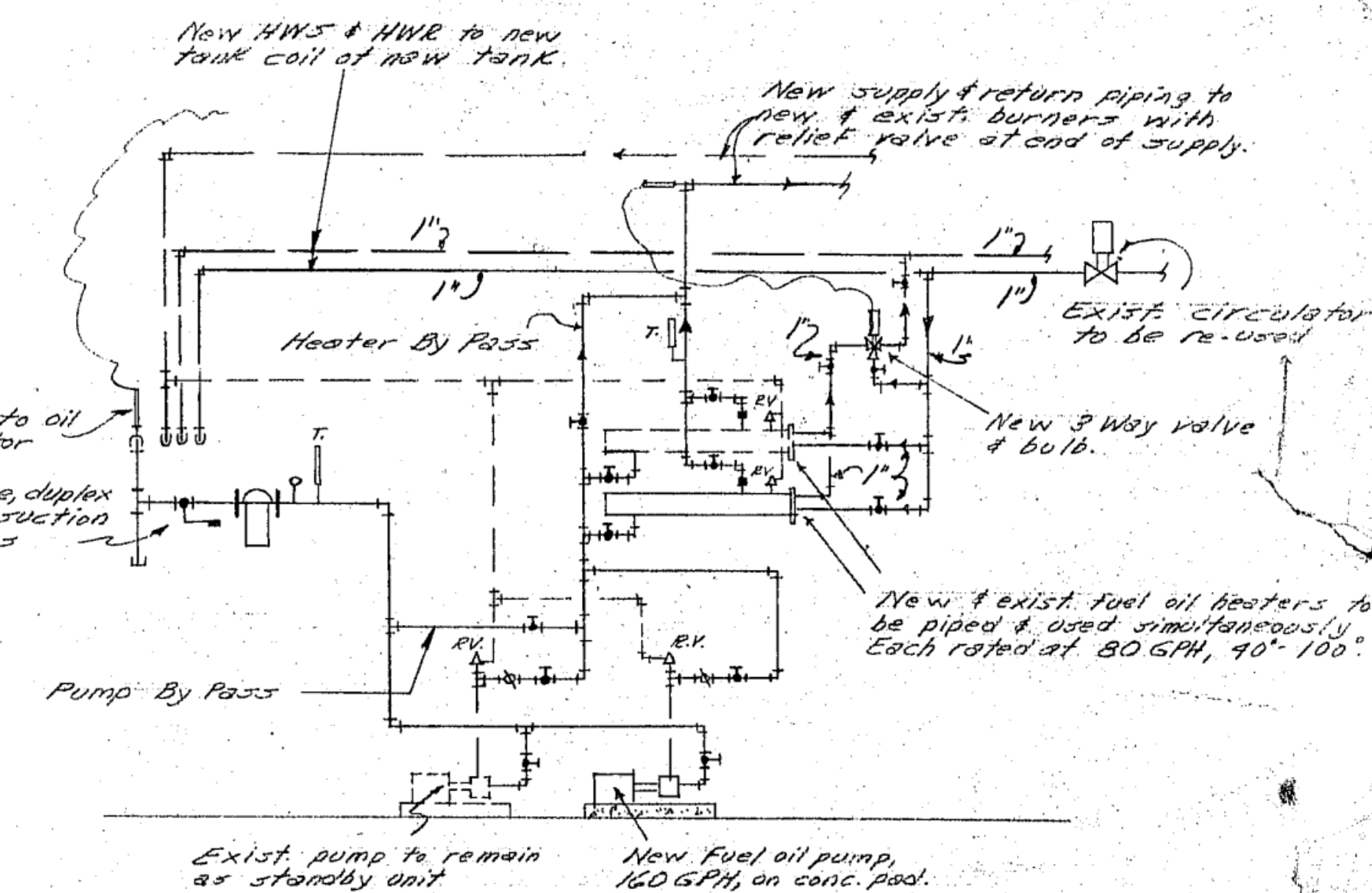
Exist. Cl. Rm. & All Pump. Rm. pump
to remain. Re-pipe as indicated
Re-use exist. 3way valves.

New pump on conc. pad. Provide throttling valve on disch.

New standby by pump. Connect disch. to each pump disch. with gate valve at each.

3. New expansion tanks, 20" x 66" 80 Gals. each, cly hung with L¹³ & drop rods. Provide tank charger & drain valve & pipe to waste.

H.W. Heater to remain, complete with pump, controls etc.



New supply & return piping to new & exist. burners with relief valve at end of supply

EXIST. circulator
to be re-used

New 3 Way valve
& bulb.

New & exist. fuel oil heaters to be piped & used simultaneously. Each rated at 80 GPH, 90°-100°.

Exist. pump to remain
as standby unit

New Fuel oil pump,
160 GPH, on conc. pool.

SCHEMATIC F.O. PIPING & HEATING DIAGRAM

NOT TO SCALE